



# The Sizewell C Project

## 6.3 Volume 2 Main Development Site Chapter 21 Marine Water Quality and Sediments Figures 21.1 - 21.8

---

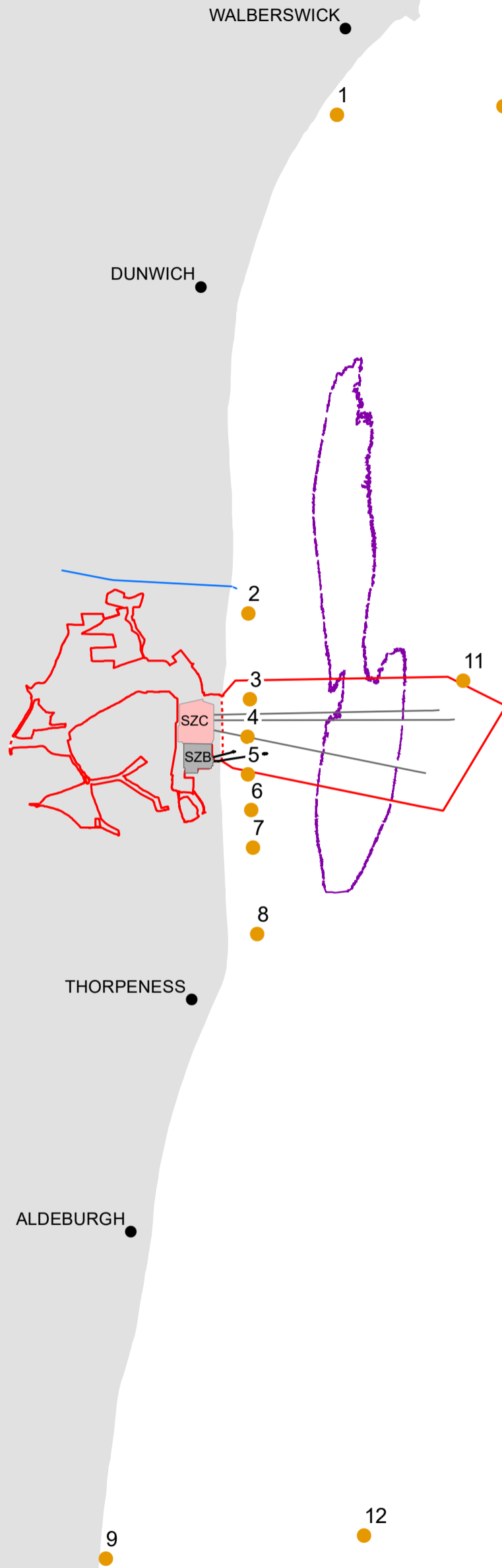
Revision: 1.0  
Applicable Regulation: Regulation 5(2)(a)  
PINS Reference Number: EN010012

---

May 2020

Planning Act 2008  
Infrastructure Planning (Applications: Prescribed  
Forms and Procedure) Regulations 2009





KEY	
	SIZEWELL C MAIN DEVELOPMENT SITE BOUNDARY
	SIZEWELL C
	SIZEWELL B
	SIZEWELL C INTAKES & OUTFALL
	SIZEWELL B INTAKE & OUTFALL
	WATER SAMPLING SITES
	MINSMERE SLUICE
	SIZEWELL DUNWICH BANK

© Copyright 2020 NNB Generation Company (SZC) Limited. No part of this drawing is to be reproduced without prior permission of NNB Generation Company (SZC) Limited.

**COPYRIGHT**  
 Reproduced from Ordnance Survey map with the permission of Ordnance Survey on behalf of the controller of Her Majesty's Stationary Office © Crown Copyright (2019). All Rights reserved. NNB GenCo 0100060408.  
 © British Crown and OceanWise, 2019. All rights reserved. License No. EK001-20170811. Not to be used for Navigation.

DRAWING TITLE:  
 MARINE WATER QUALITY SAMPLING SITES 2010/11

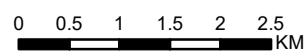
DOCUMENT:  
 SIZEWELL C  
 ENVIRONMENTAL STATEMENT  
 VOLUME 2  
 CHAPTER 21  
 MARINE WATER QUALITY AND SEDIMENT

NOT PROTECTIVELY MARKED

DRAWING NO:  
 FIGURE 21.1

SCALE BAR

DATE: JAN 2020	DRAWN: R.H.	SCALE: 1:75,000 @A3
-------------------	----------------	------------------------





SZ3 REFERENCE (SZ3)



SZC

SZB

SZB INTAKE (SZ140)

SZB OUTFALL (SZ142)

SZC INTAKE OUTFALL (SZ141)

KEY	
	SIZEWELL C MAIN DEVELOPMENT SITE BOUNDARY
	SIZEWELL B
	SIZEWELL C
	SZC OUTFALL
	SZC INTAKE
	SIZEWELL B INTAKE AND OUTFALL
	SIZEWELL C INTAKES AND OUTFALL
	WATER SAMPLING STATIONS
	MINSMERE SLUICE
	SIZEWELL DUNWICH BANK
	SIZEWELL C OUTFALL 250M BUFFER
	SIZEWELL C INTAKES 250M BUFFER

© Copyright 2020 NNB Generation Company (SZC) Limited. No part of this drawing is to be reproduced without prior permission of NNB Generation Company (SZC) Limited.

COPYRIGHT  
Reproduced from Ordnance Survey map with the permission of Ordnance Survey on behalf of the controller of Her Majesty's Stationary Office © Crown Copyright (2019). All Rights reserved. NNB GenCo 0100060408.  
© British Crown and OceanWise, 2019. All rights reserved. License No. EK001-20170811. Not to be used for Navigation.

DRAWING TITLE:  
MARINE WATER QUALITY SAMPLING SITES 2014/15

DOCUMENT:  
SIZEWELL C  
ENVIRONMENTAL STATEMENT  
VOLUME 2  
CHAPTER 21  
MARINE WATER QUALITY AND SEDIMENT

NOT PROTECTIVELY MARKED

DRAWING NO:  
FIGURE 21.2

SCALE BAR  
0 0.2 0.4 0.6 0.8 1 KM

DATE:  
JAN 2020

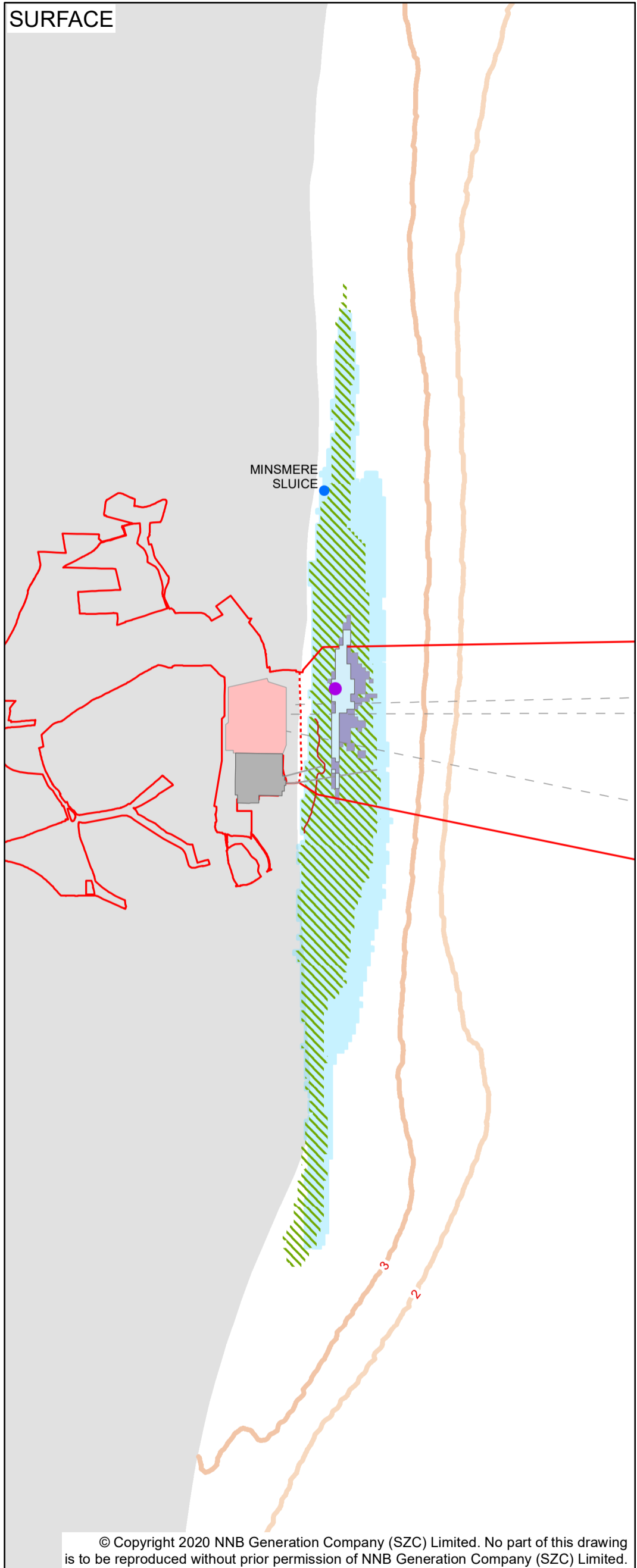
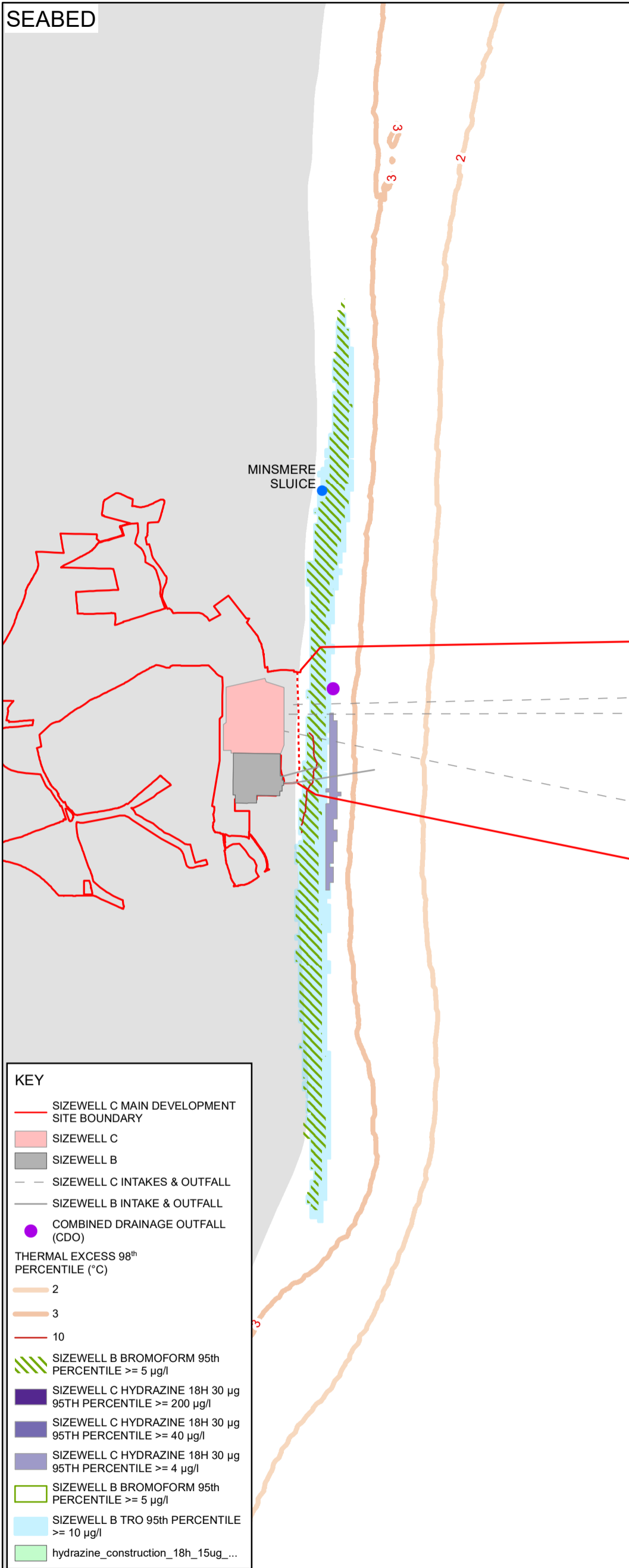
DRAWN:  
R.H.

SCALE:  
1:30,000 @A3



SEABED

SURFACE



- KEY**
- SIZEWELL C MAIN DEVELOPMENT SITE BOUNDARY
  - SIZEWELL C
  - SIZEWELL B
  - - - SIZEWELL C INTAKES & OUTFALL
  - SIZEWELL B INTAKE & OUTFALL
  - COMBINED DRAINAGE OUTFALL (CDO)
- THERMAL EXCESS 98<sup>th</sup> PERCENTILE (°C)**
- 2
  - 3
  - 10
- ▨ SIZEWELL B BROMOFORM 95th PERCENTILE >= 5 µg/l
  - SIZEWELL C HYDRAZINE 18H 30 µg 95TH PERCENTILE >= 200 µg/l
  - SIZEWELL C HYDRAZINE 18H 30 µg 95TH PERCENTILE >= 40 µg/l
  - SIZEWELL C HYDRAZINE 18H 30 µg 95TH PERCENTILE >= 4 µg/l
  - ▨ SIZEWELL B BROMOFORM 95th PERCENTILE >= 5 µg/l
  - SIZEWELL B TRO 95th PERCENTILE >= 10 µg/l
  - hydrazine\_construction\_18h\_15ug\_...

© Copyright 2020 NNB Generation Company (SZC) Limited. No part of this drawing is to be reproduced without prior permission of NNB Generation Company (SZC) Limited.

**COPYRIGHT**  
 Reproduced from Ordnance Survey map with the permission of Ordnance Survey on behalf of the controller of Her Majesty's Stationery Office © Crown Copyright (2019). All Rights reserved. NNB GenCo 0100060408.  
 © British Crown and OceanWise, 2019. All rights reserved. License No. EK001-20170811. Not to be used for Navigation.

**DRAWING TITLE:**  
 THERMAL, TRO, BROMOFORM, HYDRAZINE, IN COMBINATION EFFECTS AT COMMISSIONING

NOT PROTECTIVELY MARKED

**DRAWING NO:**  
 FIGURE 21.3

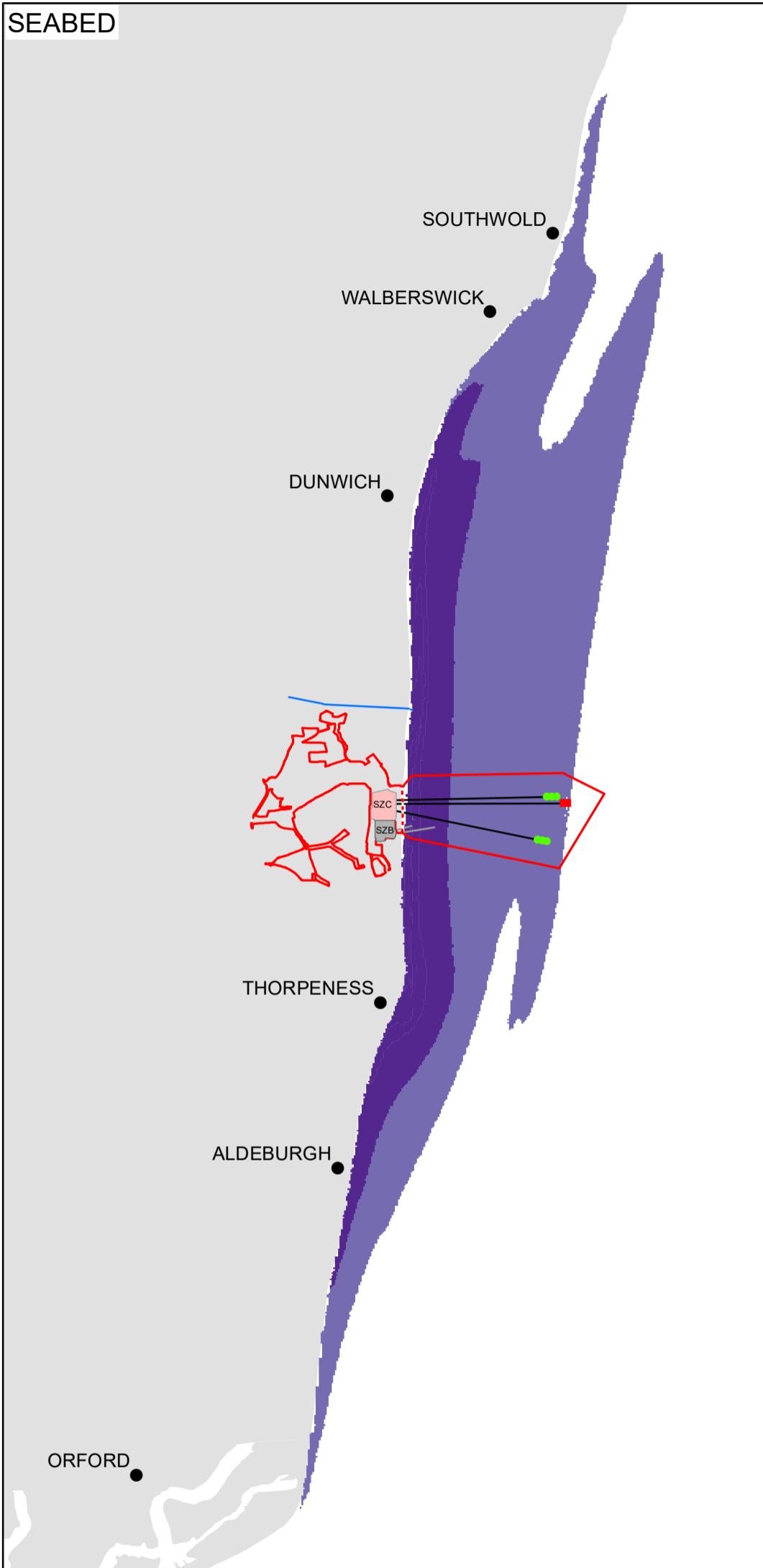
**DATE:** JAN 2020     **DRAWN:** R.H.     **SCALE:** 1:40,000 @A3

**DOCUMENT:**  
 SIZEWELL C ENVIRONMENTAL STATEMENT VOLUME 2 CHAPTER 21 MARINE WATER QUALITY AND SEDIMENT

**SCALE BAR**  
 0 0.5 1 1.5 2 2.5 KM



SEABED



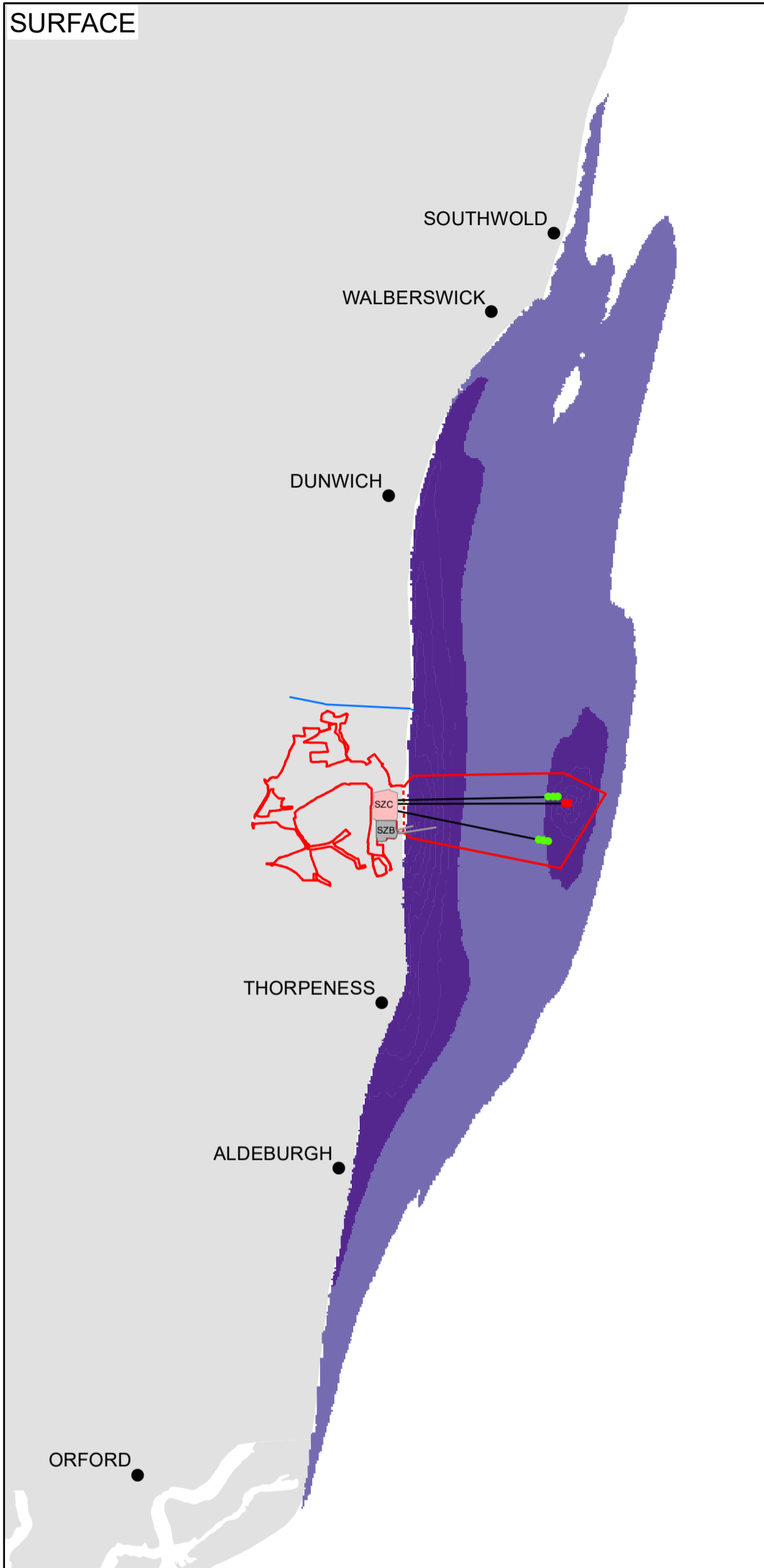
**KEY**

- SIZEWELL C MAIN DEVELOPMENT SITE BOUNDARY
- SIZEWELL C INTAKE
- SIZEWELL C OUTFALL
- SIZEWELL C INTAKES AND OUTFALL
- SIZEWELL B INTAKE AND OUTFALL

SIZEWELL B + SIZEWELL C EXCESS 98<sup>TH</sup> PERCENTILE

- >3°C
- >2°C
- MINSMERE SLUICE

SURFACE



© Copyright 2020 NNB Generation Company (SZC) Limited. No part of this drawing is to be reproduced without prior permission of NNB Generation Company (SZC) Limited.

**COPYRIGHT**  
 Reproduced from Ordnance Survey map with the permission of Ordnance Survey on behalf of the controller of Her Majesty's Stationary Office © Crown Copyright (2019). All Rights reserved. NNB GenCo 0100060408.  
 © British Crown and OceanWise, 2019. All rights reserved. License No. EK001-20170811. Not to be used for Navigation.

**DRAWING TITLE:**  
 SIZEWELL B AND SIZEWELL C OPERATIONAL THERMAL PLUME EXCESS 98<sup>TH</sup> PERCENTILE

NOT PROTECTIVELY MARKED

**DRAWING NO:**  
 FIGURE 21.4

<b>DATE:</b> JAN 2020	<b>DRAWN:</b> R.H.	<b>SCALE:</b> 1:115,000 @A3
--------------------------	-----------------------	--------------------------------

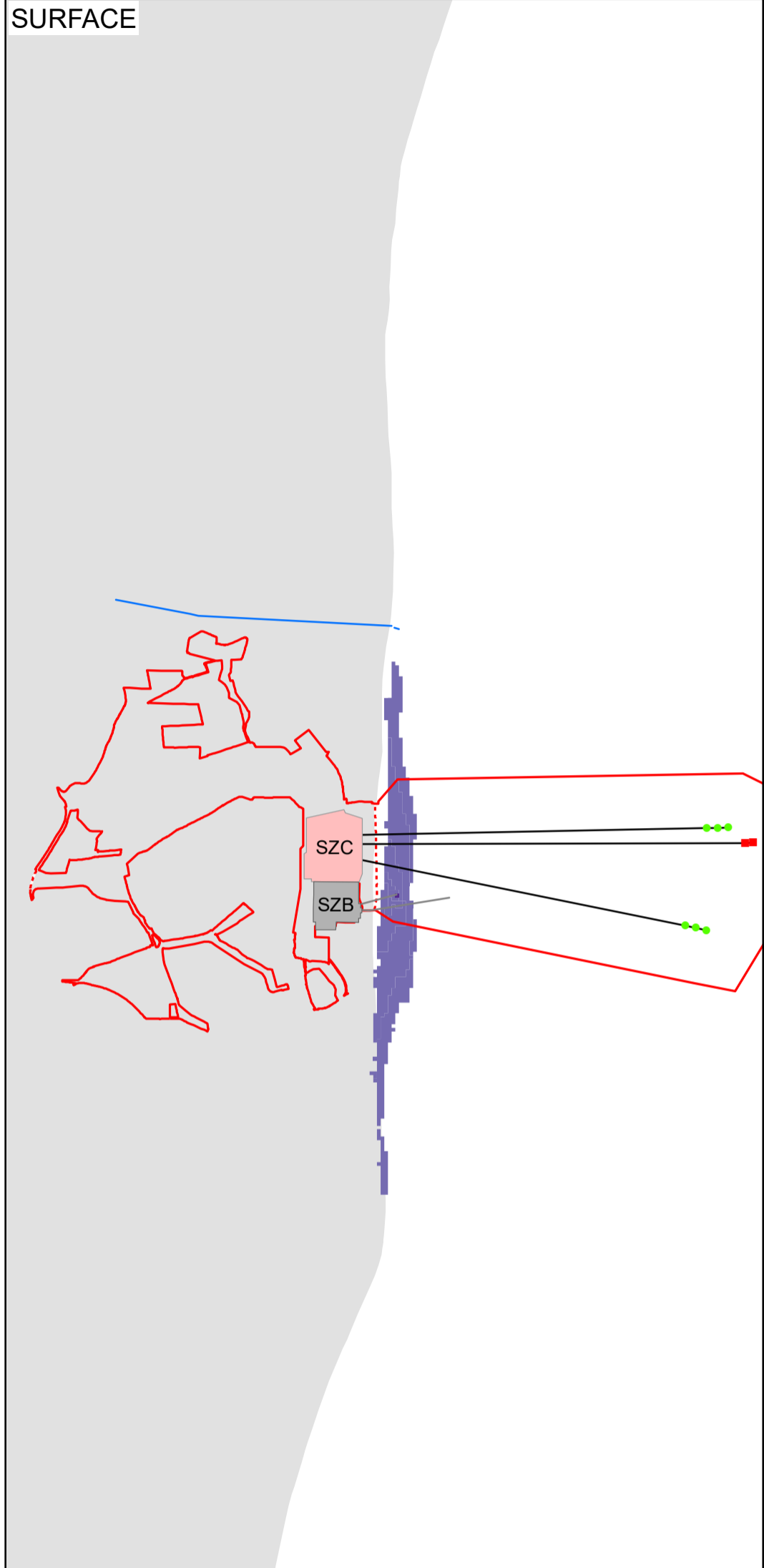
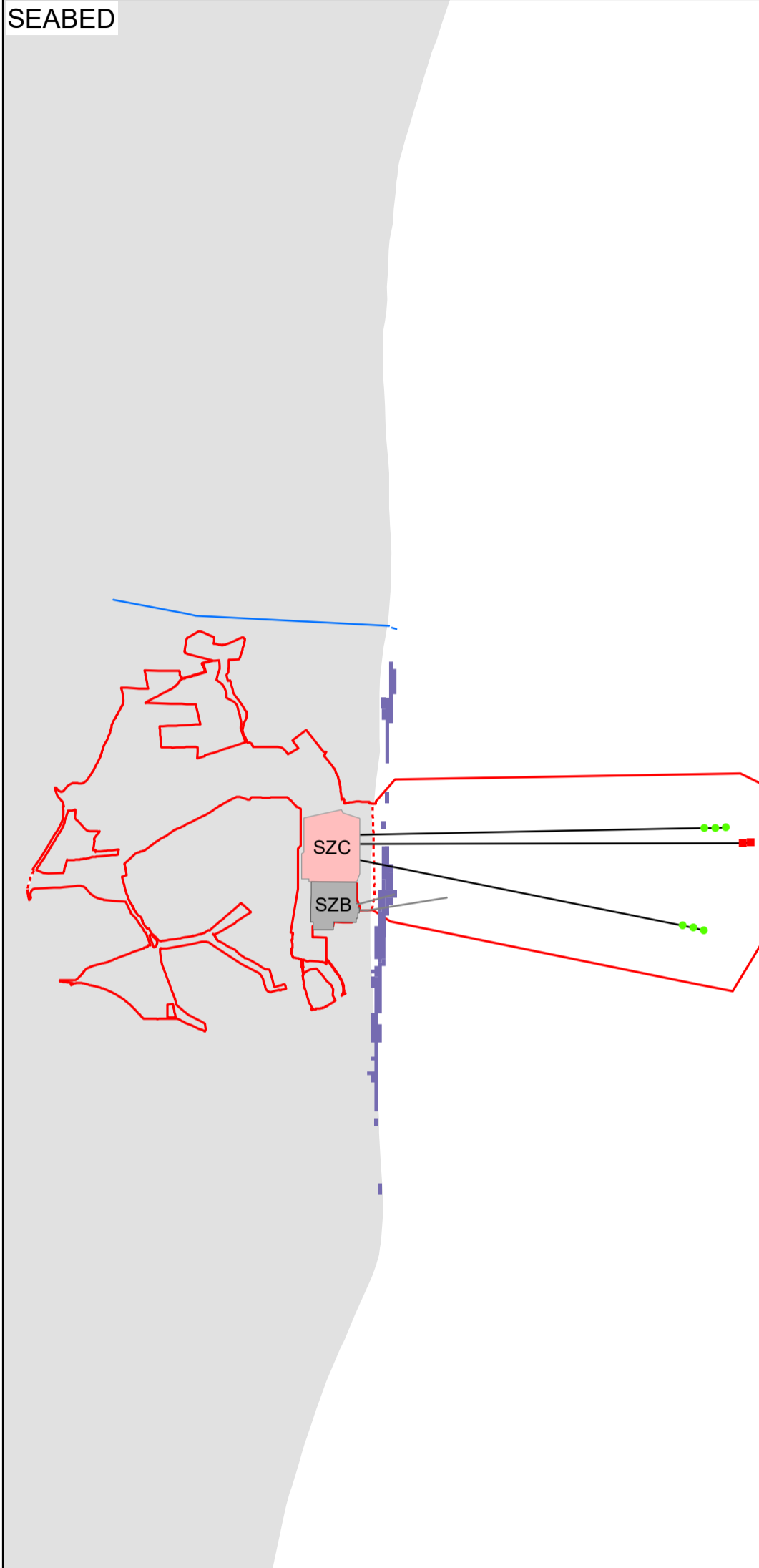
**DOCUMENT:**  
 SIZEWELL C ENVIRONMENTAL STATEMENT VOLUME 2 CHAPTER 21 MARINE WATER QUALITY AND SEDIMENT

**SCALE BAR**



SEABED

SURFACE



**KEY**

- SIZEWELL C MAIN SITE DEVELOPMENT SITE BOUNDARY
- SIZEWELL C INTAKE
- SIZEWELL C OUTFALL
- SIZEWELL C INTAKES AND OUTFALL
- SIZEWELL B INTAKE AND OUTFALL
- SIZEWELL B + SIZEWELL C ABSOLUTE 98<sup>TH</sup> PERCENTILE
- 28°C (>+8.6°C)
- 23°C (>+3.6°C)
- MINSMERE SLUICE

© Copyright 2020 NNB Generation Company (SZC) Limited. No part of this drawing is to be reproduced without prior permission of NNB Generation Company (SZC) Limited.

**COPYRIGHT**  
 Reproduced from Ordnance Survey map with the permission of Ordnance Survey on behalf of the controller of Her Majesty's Stationary Office © Crown Copyright (2019). All Rights reserved. NNB GenCo 0100060408.  
 © British Crown and OceanWise, 2019. All rights reserved. License No. EK001-20170811. Not to be used for Navigation.

**DRAWING TITLE:**  
 SIZEWELL B AND SIZEWELL C OPERATIONAL ABSOLUTE THERMAL PLUMES 98<sup>TH</sup> PERCENTILE

NOT PROTECTIVELY MARKED

**DRAWING NO:**  
 FIGURE 21.5

<b>DATE:</b> JAN 2020	<b>DRAWN:</b> R.H.	<b>SCALE:</b> 1:50,000 @A3
--------------------------	-----------------------	-------------------------------

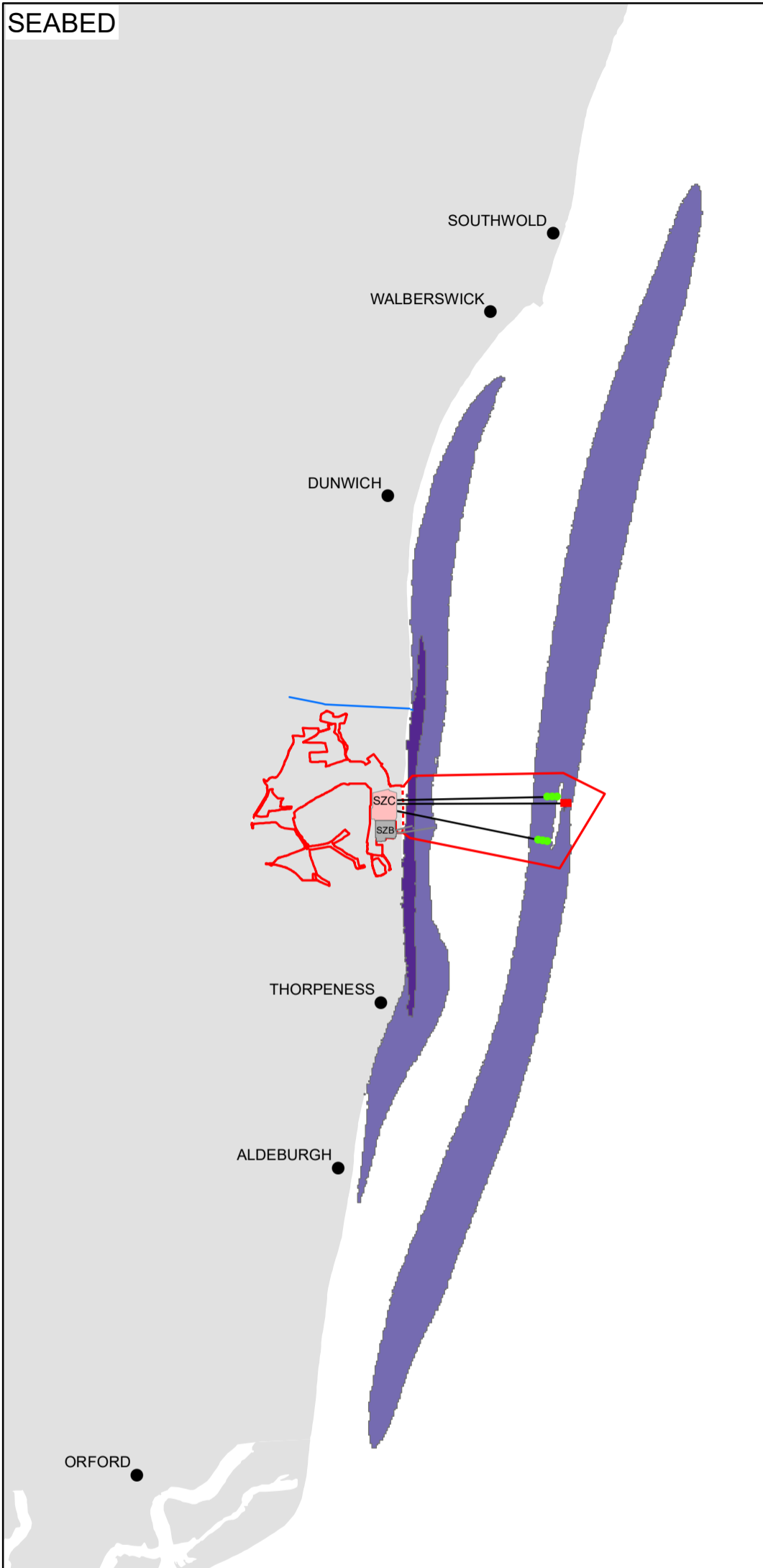
**DOCUMENT:**  
 SIZEWELL C ENVIRONMENTAL STATEMENT VOLUME 2 CHAPTER 21 MARINE WATER QUALITY AND SEDIMENT

**SCALE BAR**

0 0.5 1 1.5 2 2.5 KM



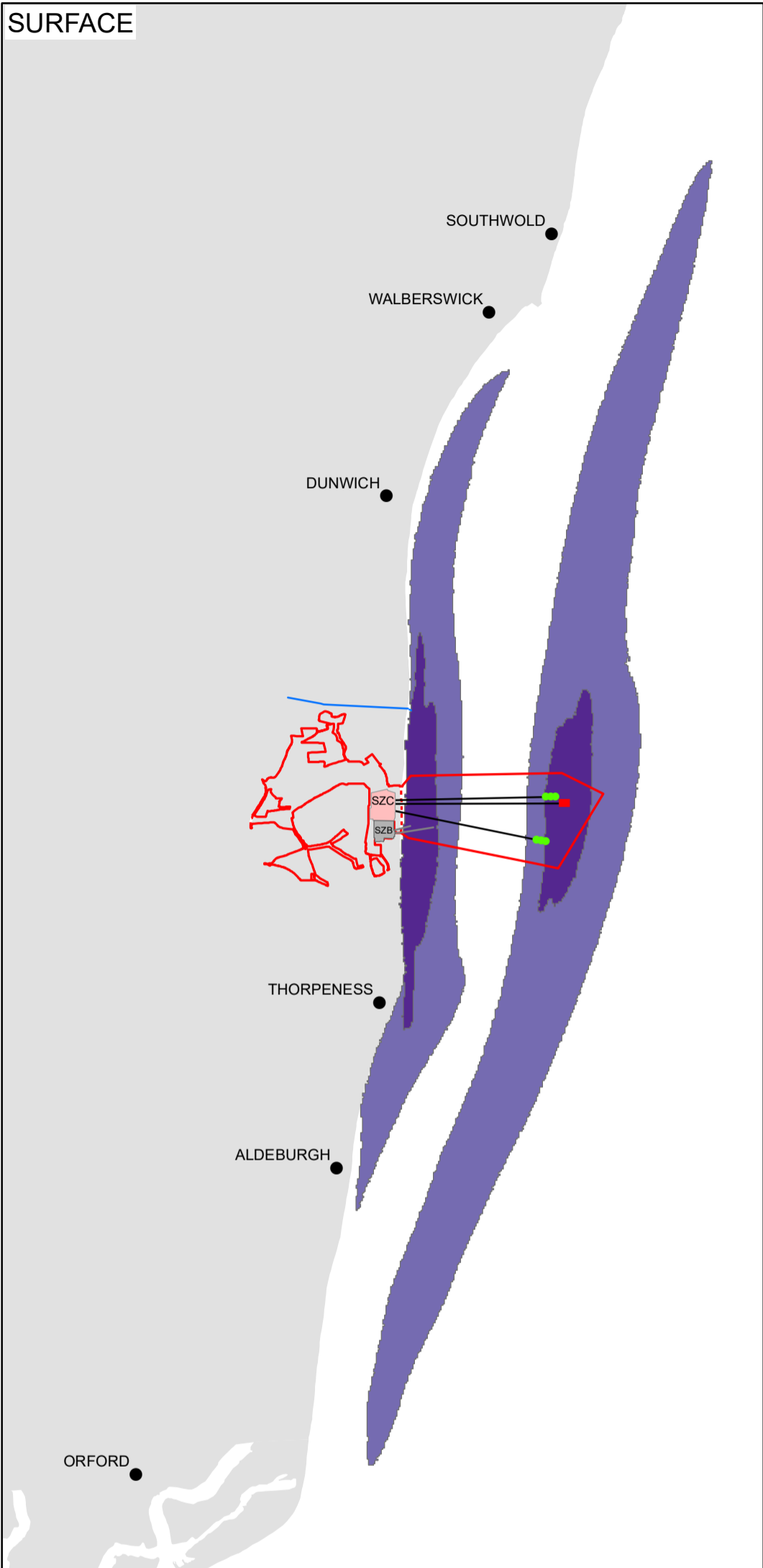
SEABED



**KEY**

- SIZEWELL C MAIN DEVELOPMENT SITE BOUNDARY
- SIZEWELL C INTAKE
- SIZEWELL C OUTFALL
- SIZEWELL C INTAKES AND OUTFALL
- SIZEWELL B INTAKE AND
- MINSMERE SLUICE
- SIZEWELL B + SIZEWELL C 95<sup>th</sup> PERCENTILE
- >= 10 µg/l
- >= 1 µg/l

SURFACE



© Copyright 2020 NNB Generation Company (SZC) Limited. No part of this drawing is to be reproduced without prior permission of NNB Generation Company (SZC) Limited.

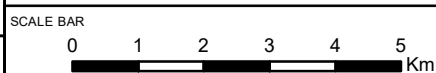
**COPYRIGHT**  
 Reproduced from Ordnance Survey map with the permission of Ordnance Survey on behalf of the controller of Her Majesty's Stationary Office © Crown Copyright (2019). All Rights reserved. NNB GenCo 0100060408.  
 © British Crown and OceanWise, 2019. All rights reserved. License No. EK001-20170811. Not to be used for Navigation.

DRAWING TITLE:  
 SIZEWELL B AND SIZEWELL C OPERATIONAL TRO PLUME 95<sup>th</sup> PERCENTILE

DOCUMENT:  
 SIZEWELL C ENVIRONMENTAL STATEMENT VOLUME 2 CHAPTER 21 MARINE WATER QUALITY AND SEDIMENT

NOT PROTECTIVELY MARKED

DRAWING NO:  
 FIGURE 21.6

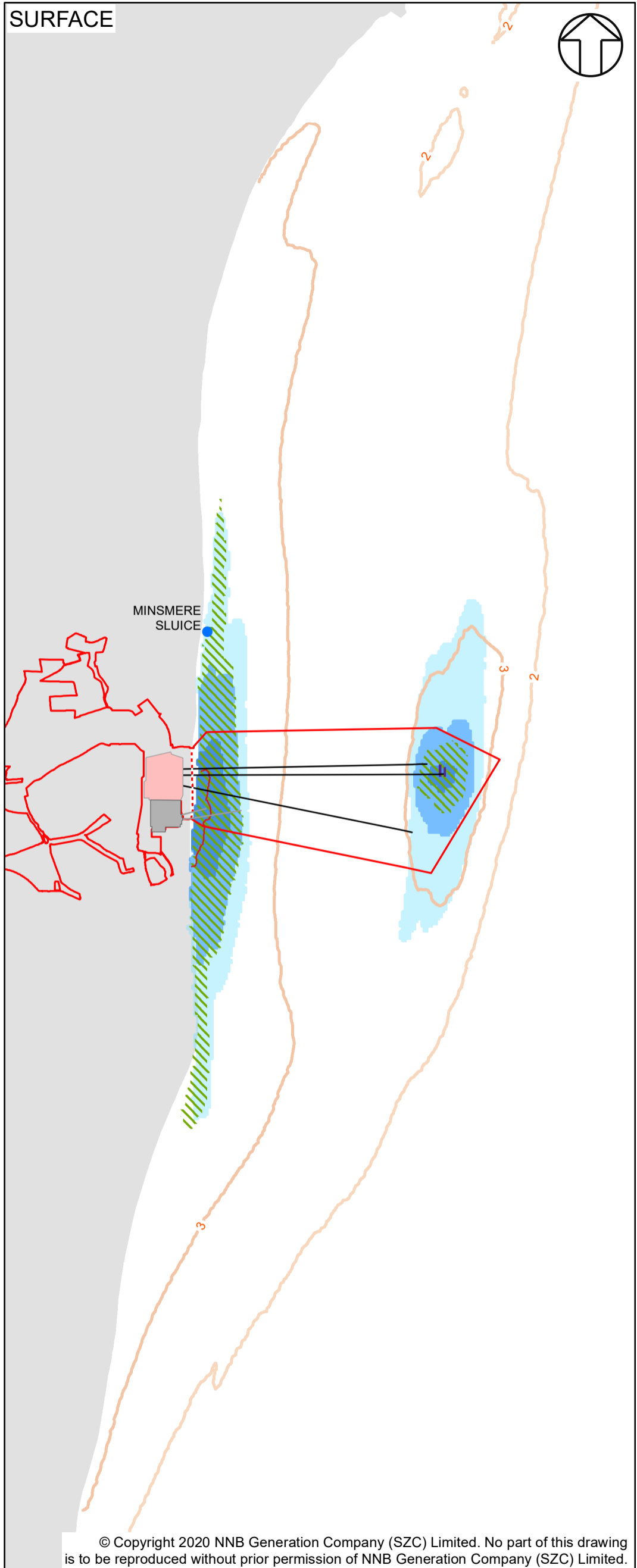
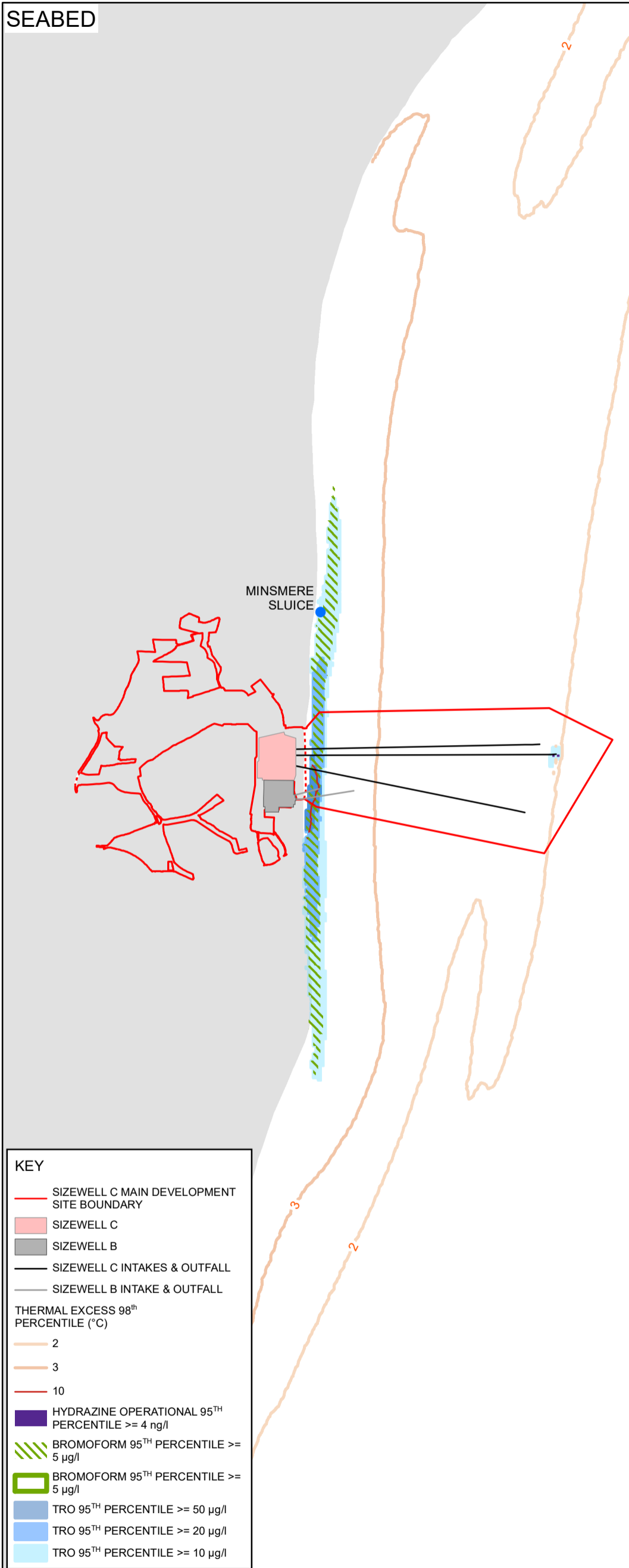


DATE: JAN 2020	DRAWN: R.H.	SCALE: 1:115,000 @A3
-------------------	----------------	-------------------------



SEABED

SURFACE



**KEY**

- SIZEWELL C MAIN DEVELOPMENT SITE BOUNDARY
- SIZEWELL C
- SIZEWELL B
- SIZEWELL C INTAKES & OUTFALL
- SIZEWELL B INTAKE & OUTFALL

**THERMAL EXCESS 98<sup>th</sup> PERCENTILE (°C)**

- 2
- 3
- 10

**HYDRAZINE OPERATIONAL 95<sup>th</sup> PERCENTILE >= 4 ng/l**

- 

**BROMOFORM 95<sup>th</sup> PERCENTILE >= 5 µg/l**

- 
- 

**TRO 95<sup>th</sup> PERCENTILE >= 50 µg/l**

- 

**TRO 95<sup>th</sup> PERCENTILE >= 20 µg/l**

- 

**TRO 95<sup>th</sup> PERCENTILE >= 10 µg/l**

- 

© Copyright 2020 NNB Generation Company (SZC) Limited. No part of this drawing is to be reproduced without prior permission of NNB Generation Company (SZC) Limited.

**COPYRIGHT**  
 Reproduced from Ordnance Survey map with the permission of Ordnance Survey on behalf of the controller of Her Majesty's Stationery Office © Crown Copyright (2019). All Rights reserved. NNB GenCo 0100060408.  
 © British Crown and OceanWise, 2019. All rights reserved. License No. EK001-20170811. Not to be used for Navigation.

**DRAWING TITLE:**  
 THERMAL, TRO, BROMOFORM, HYDRAZINE, OPERATIONAL IN COMBINATION EFFECTS

**NOT PROTECTIVELY MARKED**

**DRAWING NO:**  
 FIGURE 21.7

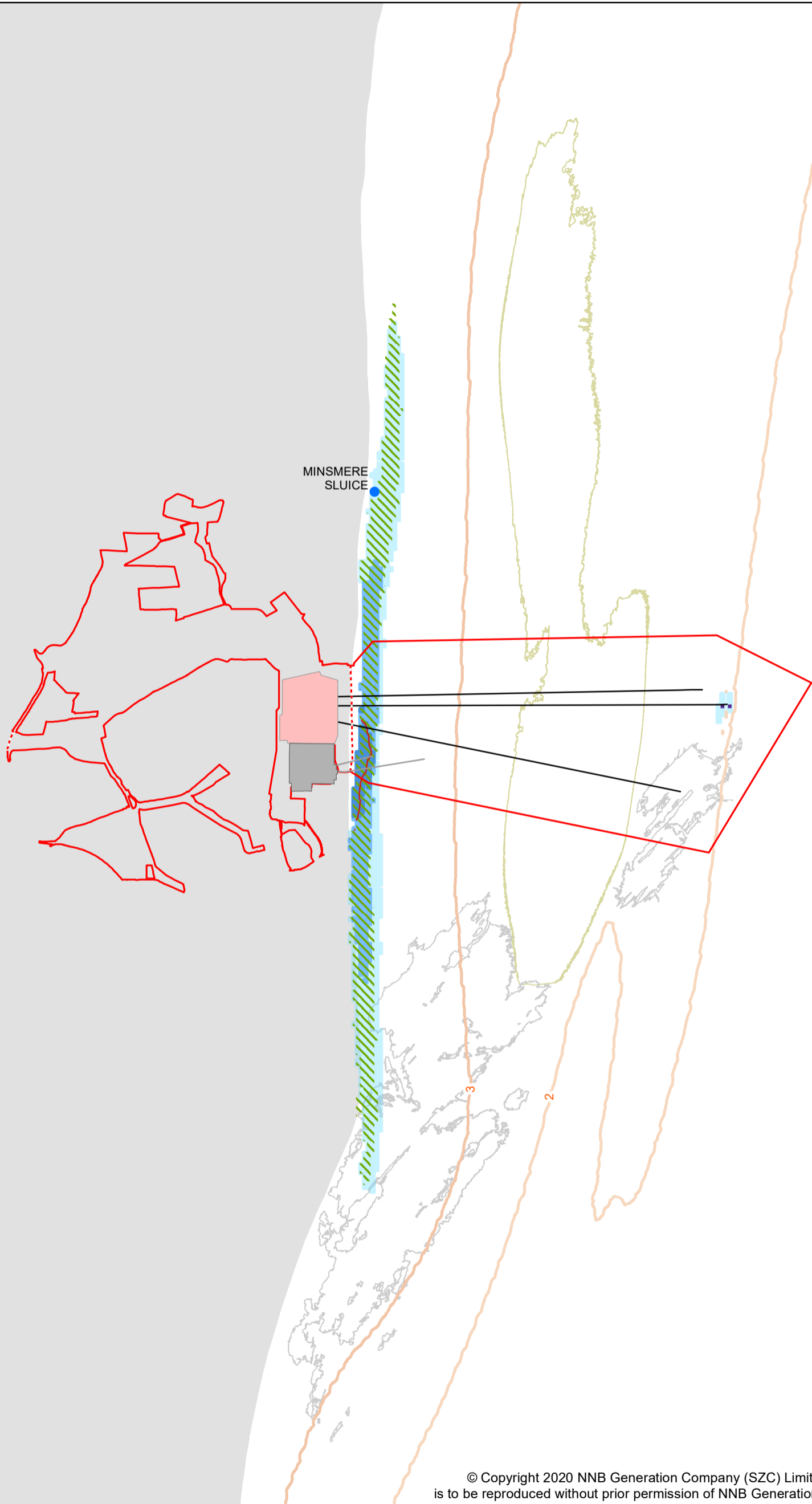
<b>DATE:</b> JAN 2020	<b>DRAWN:</b> R.H.	<b>SCALE:</b> 1:62,500 @A3
--------------------------	-----------------------	-------------------------------

**DOCUMENT:**  
 SIZEWELL C ENVIRONMENTAL STATEMENT VOLUME 2 CHAPTER 21 MARINE WATER QUALITY AND SEDIMENT

**SCALE BAR**







KEY	
	SIZEWELL C MAIN DEVELOPMENT SITE BOUNDARY
	SIZEWELL C
	SIZEWELL B
	SIZEWELL C INTAKES & OUTFALL
	SIZEWELL B INTAKE & OUTFALL
	SIZEWELL DUNWICH BANK
THERMAL EXCESS 98 <sup>TH</sup> PERCENTILE (°C)	
	2
	3
	10
	HYDRAZINE OPERATIONAL 95 <sup>TH</sup> PERCENTILE >= 4 ng/l
	BROMOFORM 95 <sup>TH</sup> PERCENTILE >= 5 µg/l
	BROMOFORM 95 <sup>TH</sup> PERCENTILE >= 5 µg/l
	TRO 95 <sup>TH</sup> PERCENTILE >= 50
	TRO 95 <sup>TH</sup> PERCENTILE >= 20
	TRO 95 <sup>TH</sup> PERCENTILE >= 10
	CORALLINE CRAG OUTFALL

© Copyright 2020 NNB Generation Company (SZC) Limited. No part of this drawing is to be reproduced without prior permission of NNB Generation Company (SZC) Limited.

**COPYRIGHT**  
 Reproduced from Ordnance Survey map with the permission of Ordnance Survey on behalf of the controller of Her Majesty's Stationary Office © Crown Copyright (2019). All Rights reserved. NNB GenCo 0100060408.  
 © British Crown and OceanWise, 2019. All rights reserved. License No. EK001-20170811. Not to be used for Navigation.

**DRAWING TITLE:**  
 THERMAL, TRO, BROMOFORM, HYDRAZINE, OPERATIONAL IN COMBINATION EFFECTS AT SEABED INCLUDING POSITION OF CORALLINE CRAG

**DOCUMENT:**  
 SIZEWELL C ENVIRONMENTAL STATEMENT VOLUME 2 CHAPTER 21 MARINE WATER QUALITY AND SEDIMENT

NOT PROTECTIVELY MARKED

**DRAWING NO:**  
 FIGURE 21.8

**SCALE BAR**  
 0 0.3 0.6 0.9 1.2 1.5 KM

<b>DATE:</b> JAN 2020	<b>DRAWN:</b> R.H.	<b>SCALE:</b> 1:40,000 @A3
--------------------------	-----------------------	-------------------------------

