



# The Sizewell C Project

## 2.5 Main Development Site Operational Service Centre Plans For Approval

May 2020

Planning Act 2008  
Infrastructure Planning (Applications: Prescribed Forms and Procedure) Regulations 2009

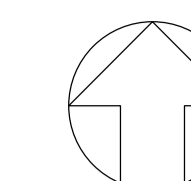
Revision: 1.0  
Applicable Regulation: Regulation 5(2)(o)  
PINS Reference Number: EN010012





# Main Development Site, Operational Service Centre – For Approval

Drawing Number	Revision	Drawing Title	Scale	Sheet Size
SZC-SZ0701-XX-000-DRW-100118	01	Roof Plan	1:200	A1
SZC-SZ0701-XX-000-DRW-100119	01	North & South Elevations	1:200	A1
SZC-SZ0701-XX-000-DRW-100120	01	East & West Elevations	1:200	A1

**NOTES:**

- Definitions: FFL - Finished Floor Level  
AOD - Above Ordnance Datum
- Platform level is defined as +7.30m AOD, an additional step of +0.20m locates the finished floor level of all buildings at +7.50m AOD.
- All dimensions are indicated to a tolerance of 0.5m.
- An additional 5m may be required to account for roof plant and machinery which may protrude above slated roof height, see Sizewell C Design and Access Statement for details.

**KEY:****Vertical Enclosure****Wall**

- 1 Concrete / render finishes**  
 1.1 In-situ concrete  
 1.2 Pre-cast concrete  
 1.3 Render finish

- 5 Doors**  
 5.1 Metal door  
 5.2 Metal louvre door  
 5.3 Glazed door  
 5.4 Access gates

**2 Cladding**

- 2.1 Aluminium standing seam  
 2.2 Aluminium panels  
 2.3 Aluminium fins  
 2.4 Profiled steel panels  
 2.5 Flat steel panels  
 2.6 Fibre cement cladding  
 2.7 Glass reinforced plastic  
 2.8 Glassfibre reinforced concrete panels  
 2.9 Anodised Aluminium panels

**6 Window / metalwork accessories**

- 6.1 External fabric blinds  
 6.2 Cavity venetian blinds  
 6.3 Glazed balustrade  
 6.4 Metal stairs and ladders  
 6.5 Steel guardrail

**3 Glazing / translucent materials**

- 3.1 Glazed curtain wall  
 3.2 Frameless glazing  
 3.3 Framed glazing  
 3.4 Opaque glazed spandrel panel

**Horizontal Enclosure****Roof**

- 7 Roofing**  
 7.1 Sedum roof  
 7.2 Ballast  
 7.3 Standing seam roof  
 7.4 Concrete roof

**4 External wall features**

- 4.1 Aluminium trims, copings and casings  
 4.2 Aluminium louvres  
 4.3 Steel louvres  
 4.4 Aluminium brise-soleil  
 4.5 Glass brise-soleil  
 4.6 Mesh expanded metal panels  
 4.7 Fencing  
 4.8 Barbed tape  
 4.9 Retractable steel shutters  
 4.10 Wall vents and hatches  
 4.11 Rainwater pipe and hopper

**8 Roofing Accessories**

- 8.1 Roof light  
 8.2 Roof vents and hatches  
 8.3 Metal cappings and copings  
 8.4 Paving  
 8.5 PVs and solar panels  
 8.6 Timber decking  
 8.7 Roof Plant  
 8.8 Steel Grid

REVISION	DATE	DRAWN/CHECKED	REASONS FOR REVISION / COMMENTS	APPROVED
01	FEB 20	GA GA	DCO SUBMISSION	SZC Co

**NOT PROTECTIVELY MARKED****COPYRIGHT:**

Reproduced from Ordnance Survey map with the permission of Ordnance Survey on behalf of the controller of Her Majesty's Stationery Office © Crown copyright (2019). All Rights reserved. NNB GenCo Licence: 0100060408



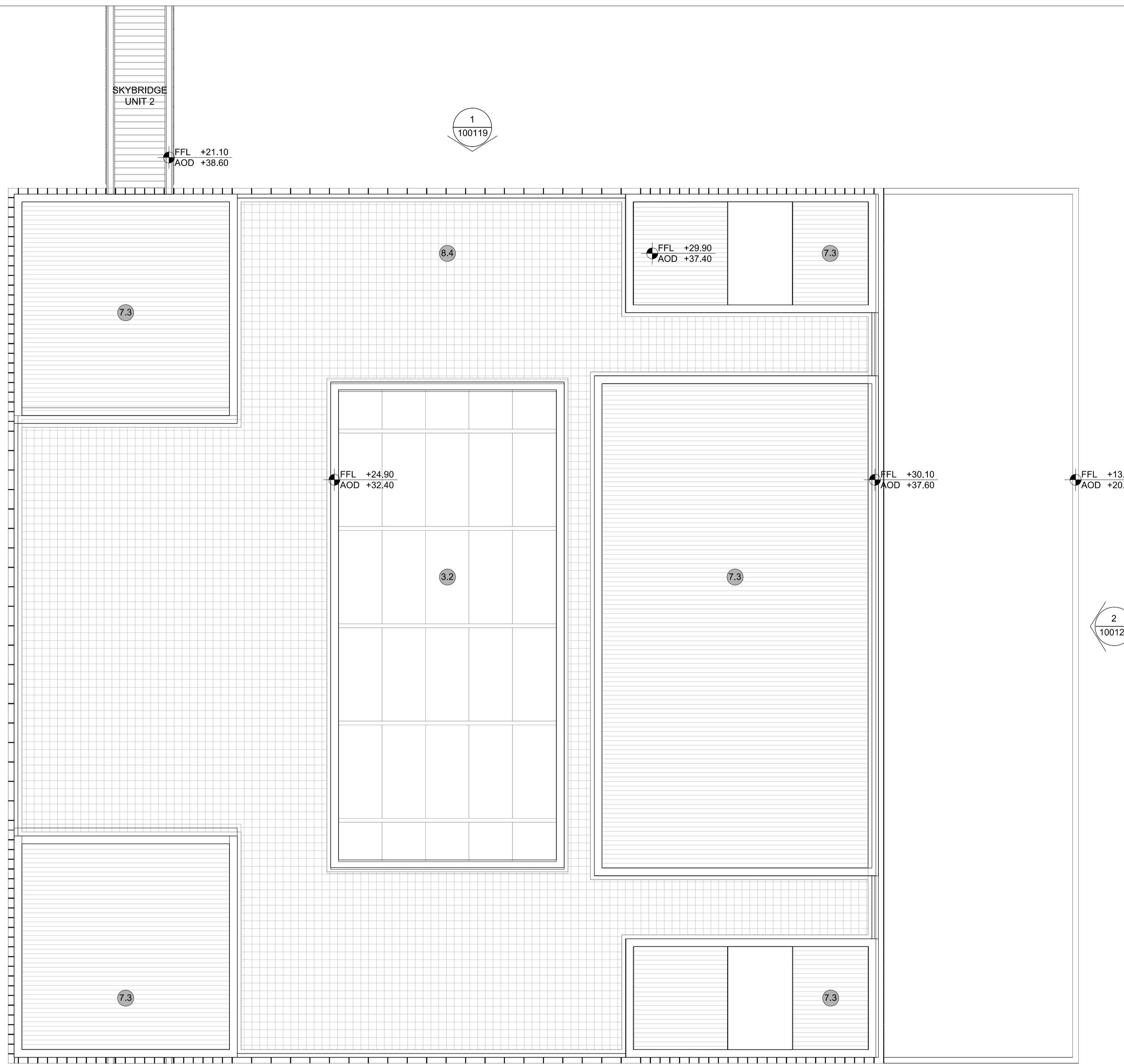
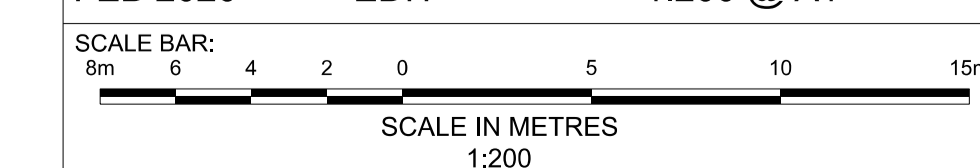
PROJECT:  
 SIZEWELL C

DOCUMENT:  
 APPLICATION DRAWING - FOR APPROVAL  
 REGULATION 5(2)(c)

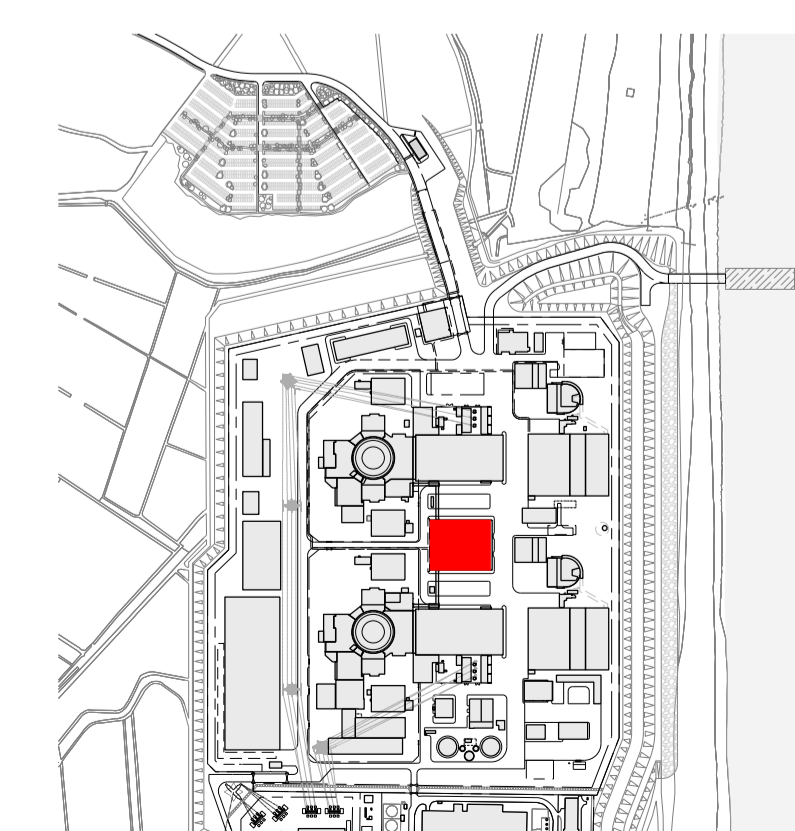
DRAWING TITLE:  
 MAIN DEVELOPMENT SITE  
 OPERATIONAL SERVICE CENTRE  
 ROOF PLAN

DRAWING NO: SZC-SZ0701-XX-000-DRW-100118 REVISION: 01

DATE: FEB 2020 DRAWN: EDH SCALE: 1:200 @ A1



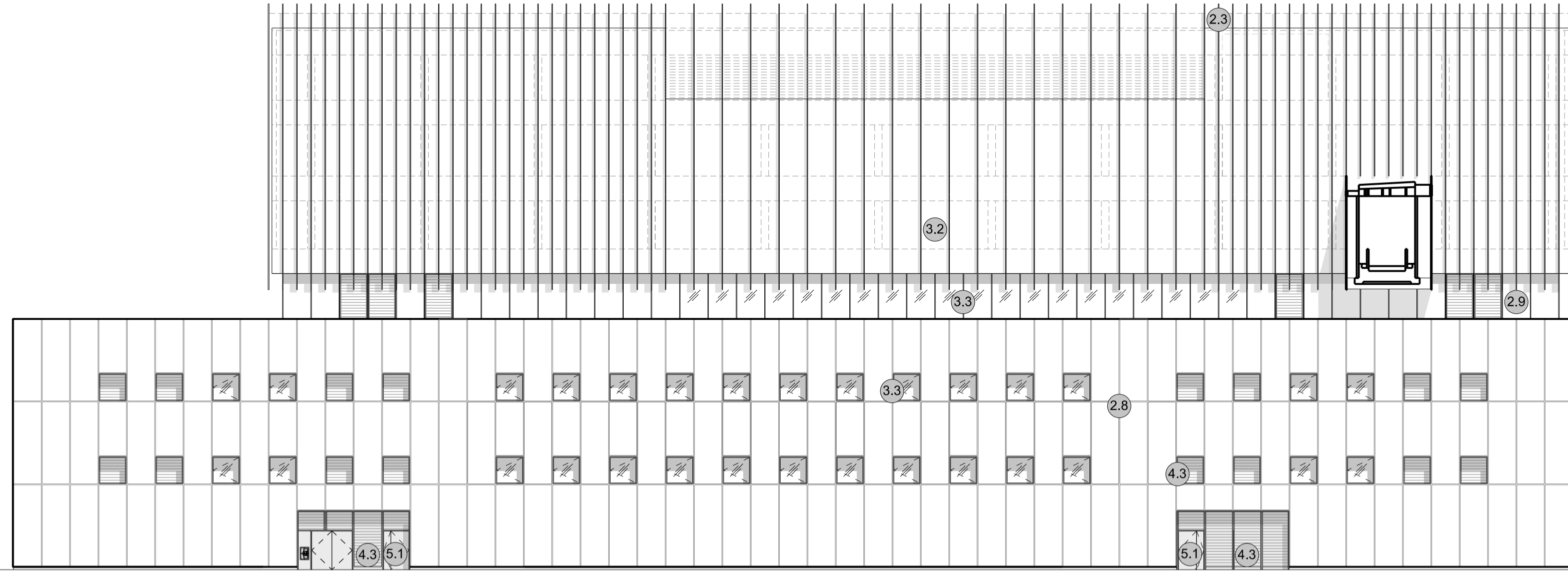
1 **ROOF ELEVATION**  
 SCALE 1:200



▽ FFL +30.10  
AOD +37.60

▽ FFL +13.25  
AOD +20.75

▽ FFL +00.00  
AOD +07.50



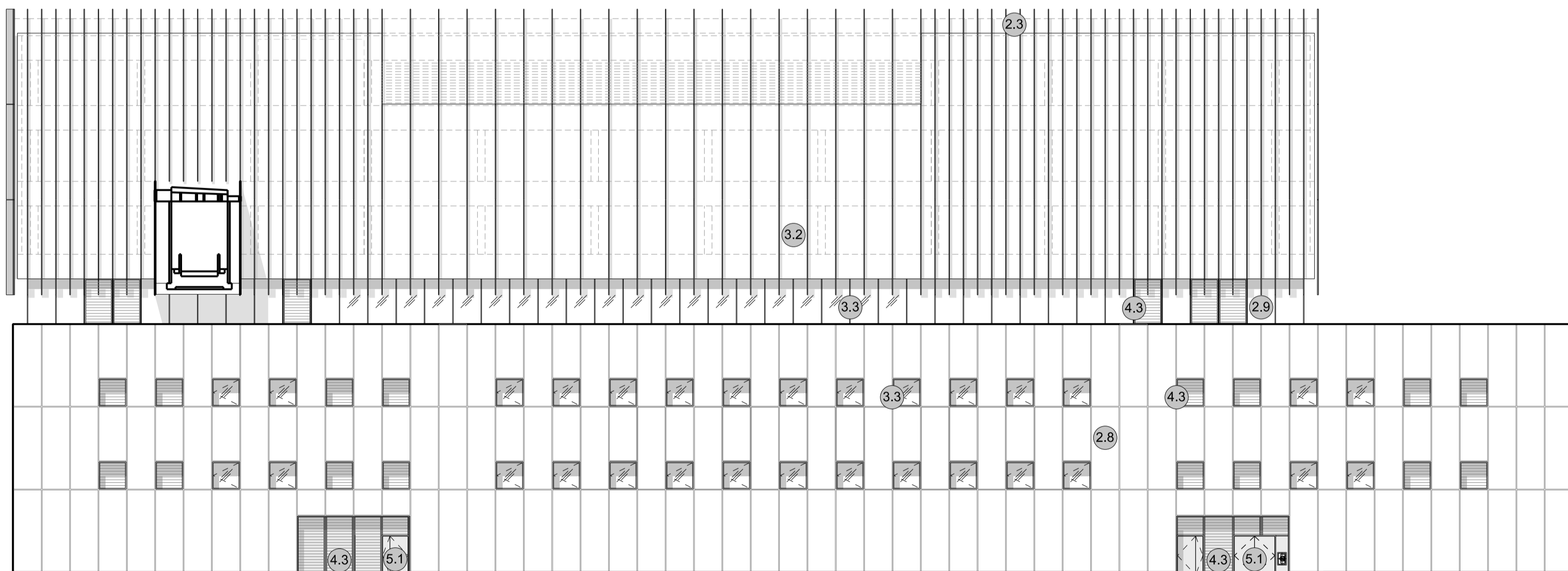
▽ FFL -00.20  
AOD +07.30

**1 NORTH ELEVATION**  
SCALE 1:200

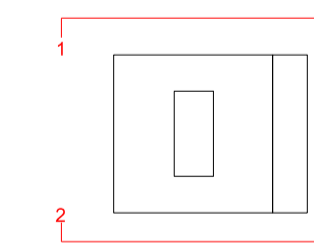
▽ FFL +30.10  
AOD +37.60

▽ FFL +13.25  
AOD +20.75

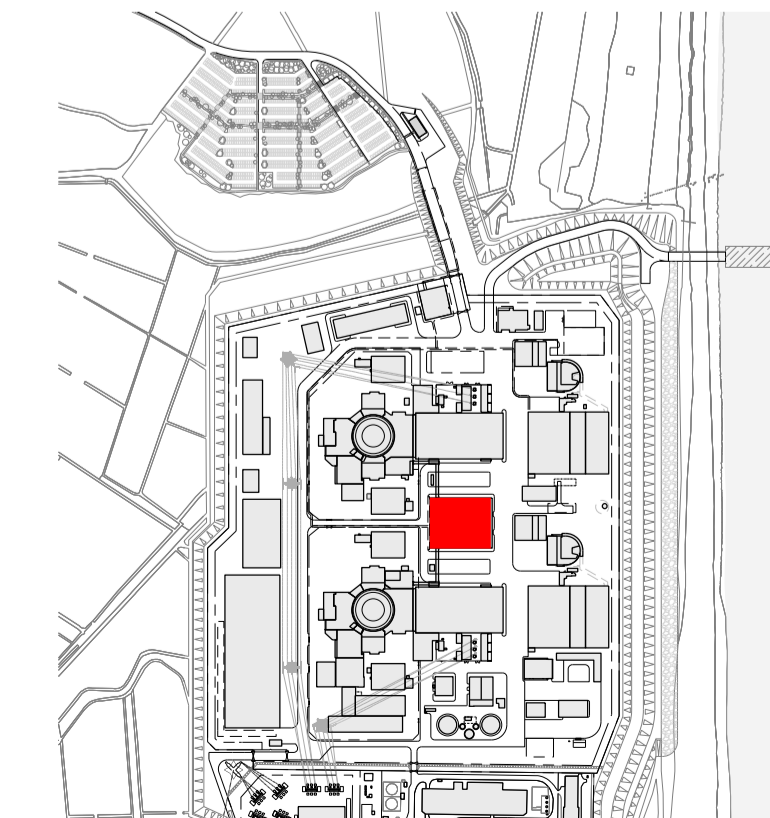
▽ FFL +00.00  
AOD +07.50



**2 SOUTH ELEVATION**  
SCALE 1:200



SIZEWELL C Elevation Key Plan - NTS



SIZEWELL C Site Key Plan - NTS

**NOTES:**

- Definitions: FFL - Finished Floor Level  
AOD - Above Ordnance Datum
- Platform level is defined as +7.30m AOD, an additional step of +0.20m locates the finished floor level of all buildings at +7.50m AOD.
- All dimensions are indicated to a tolerance of 0.5m.
- External projections including telecommunications infrastructure (including aerials and satellites), access structures and safety measures (including ladders and handrails), mechanical plant, utilities infrastructure (including solar panels) and minor architectural features (including gutters and lighting) are not shown and may be added subsequently.

**KEY:**

**Vertical Enclosure**

**Wall**

- |                                     |                       |
|-------------------------------------|-----------------------|
| <b>1 Concrete / render finishes</b> | <b>5 Doors</b>        |
| 1.1 In-situ concrete                | 5.1 Metal door        |
| 1.2 Pre-cast concrete               | 5.2 Metal louvre door |
| 1.3 Render finish                   | 5.3 Glazed door       |
|                                     | 5.4 Access gates      |

**2 Cladding**

- |   |   |
|---|---|
| 2.1 Aluminium standing seam               | <b>6 Window / metalwork accessories</b> |
| 2.2 Aluminium panels                      | 6.1 External fabric blinds              |
| 2.3 Aluminium fins                        | 6.2 Cavity venetian blinds              |
| 2.4 Profiled steel panels                 | 6.3 Glazed balustrade                   |
| 2.5 Flat steel panels                     | 6.4 Metal stairs and ladders            |
| 2.6 Fibre cement cladding                 | 6.5 Steel guardrail                     |
| 2.7 Glass reinforced plastic              |   |
| 2.8 Glassfibre reinforced concrete panels |   |
| 2.9 Anodised Aluminium panels             |   |

**3 Glazing / translucent materials**

- |                                  |                                  |
|----------------------------------|----------------------------------|
| 3.1 Glazed curtain wall          | <b>Horizontal Enclosure Roof</b> |
| 3.2 Frameless glazing            | <b>7 Roofing</b>                 |
| 3.3 Framed glazing               | 7.1 Sedum roof                   |
| 3.4 Opaque glazed spandrel panel | 7.2 Ballast                      |
|                                  | 7.3 Standing seam roof           |
|                                  | 7.4 Concrete roof                |

**4 External wall features**

- |  |                                |
|--|--------------------------------|
| 4.1 Aluminium trims, copings and casings | <b>8 Roofing Accessories</b>   |
| 4.2 Aluminium louvres                    | 8.1 Roof light                 |
| 4.3 Steel louvres                        | 8.2 Roof vents and hatches     |
| 4.4 Aluminium brise-soleil               | 8.3 Metal cappings and copings |
| 4.5 Glass brise-soleil                   | 8.4 Paving                     |
| 4.6 Mesh expanded metal panels           | 8.5 PVs and solar panels       |
| 4.7 Fencing                              | 8.6 Timber decking             |
| 4.8 Barbed tape                          | 8.7 Roof Plant                 |
| 4.9 Retractable steel shutters           | 8.8 Steel Grid                 |
| 4.10 Wall vents and hatches              |                                |
| 4.11 Rainwater pipe and hopper           |                                |

REVISION	DATE	DRAWN/CHECKED	REASONS FOR REVISION / COMMENTS	APPROVED	
01	FEB 20	GA	GA	DCO SUBMISSION	SZC Co

NOT PROTECTIVELY MARKED

**COPYRIGHT:**

Reproduced from Ordnance Survey map with the permission of Ordnance Survey on behalf of the controller of Her Majesty's Stationery Office © Crown copyright (2019). All Rights reserved. NNB GenCo Licence: 0100060408



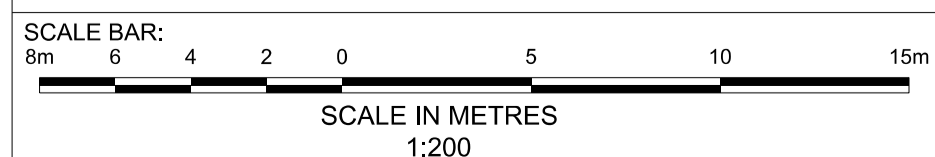
PROJECT:  
SIZEWELL C

DOCUMENT:  
APPLICATION DRAWING - FOR APPROVAL  
REGULATION 5(2)(o)

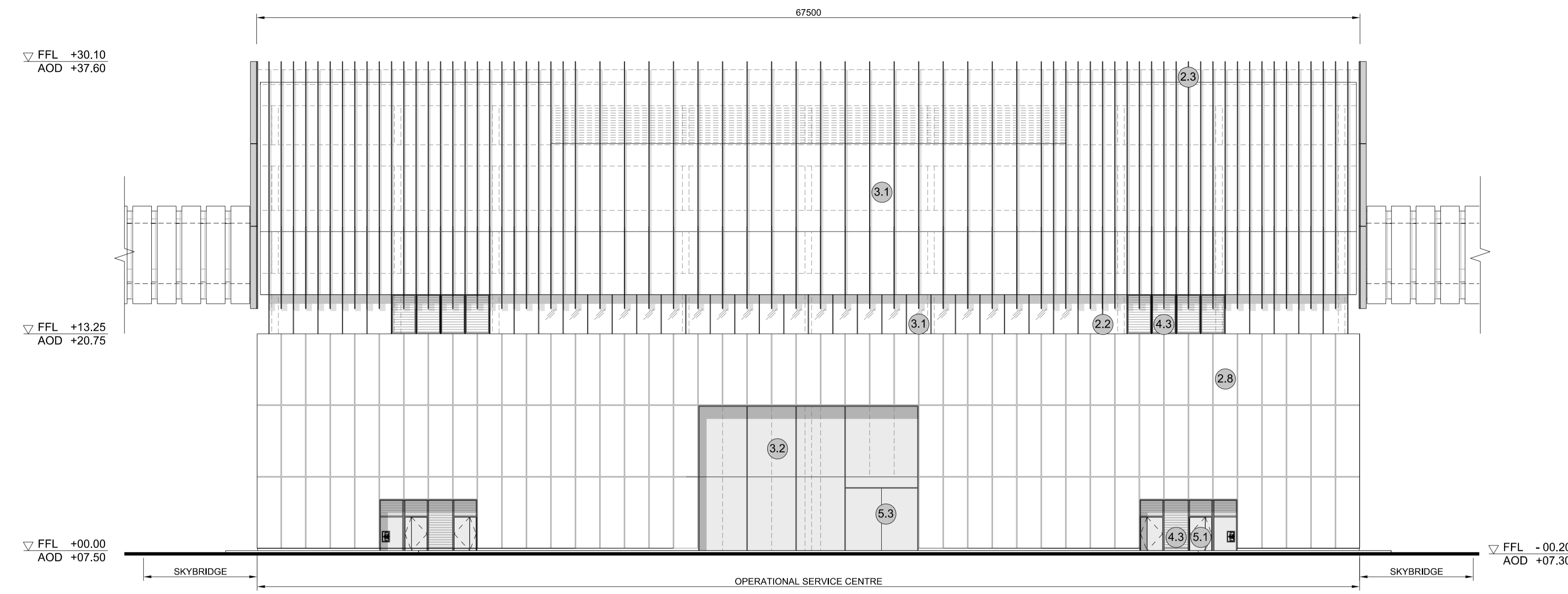
DRAWING TITLE:  
MAIN DEVELOPMENT SITE  
OPERATIONAL SERVICE CENTRE  
NORTH & SOUTH ELEVATIONS

DRAWING NO: SZC-SZ0701-XX-000-DRW-100119 REVISION: 01

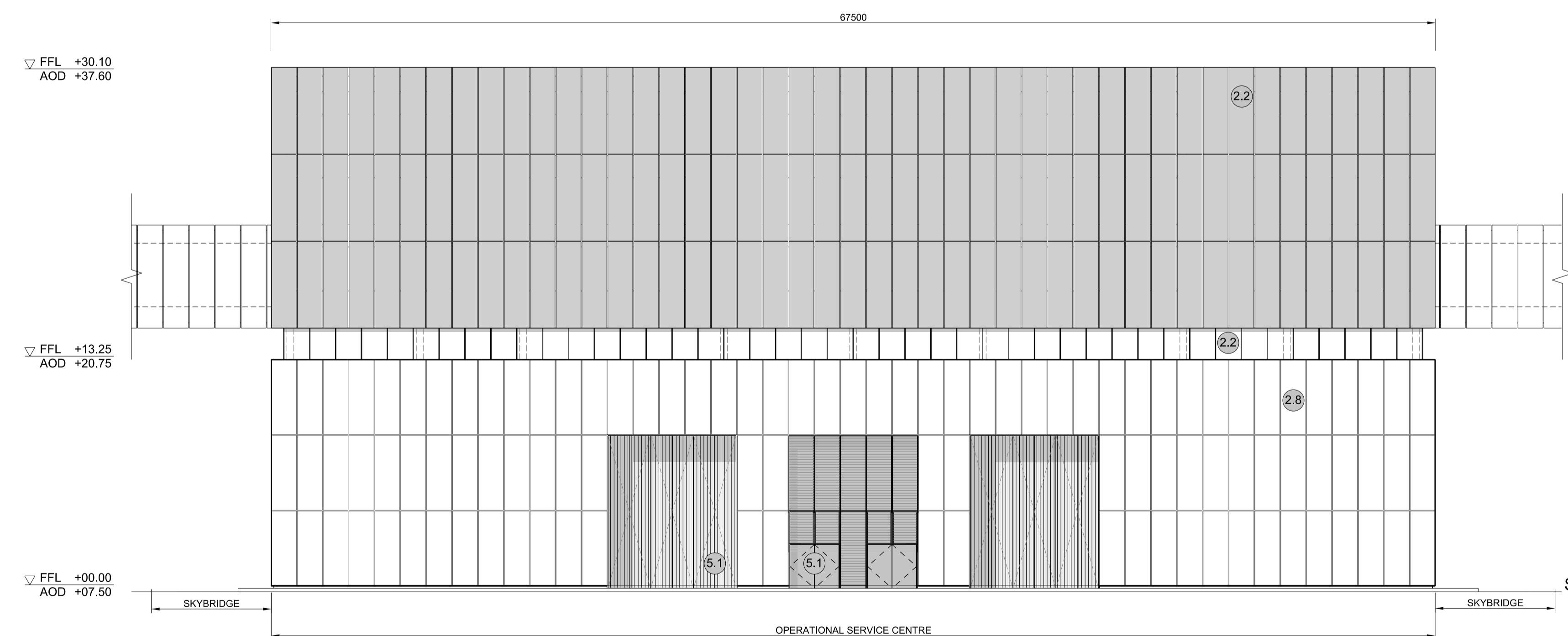
DATE: FEB 2020 DRAWN: EDH SCALE: 1:200 @ A1



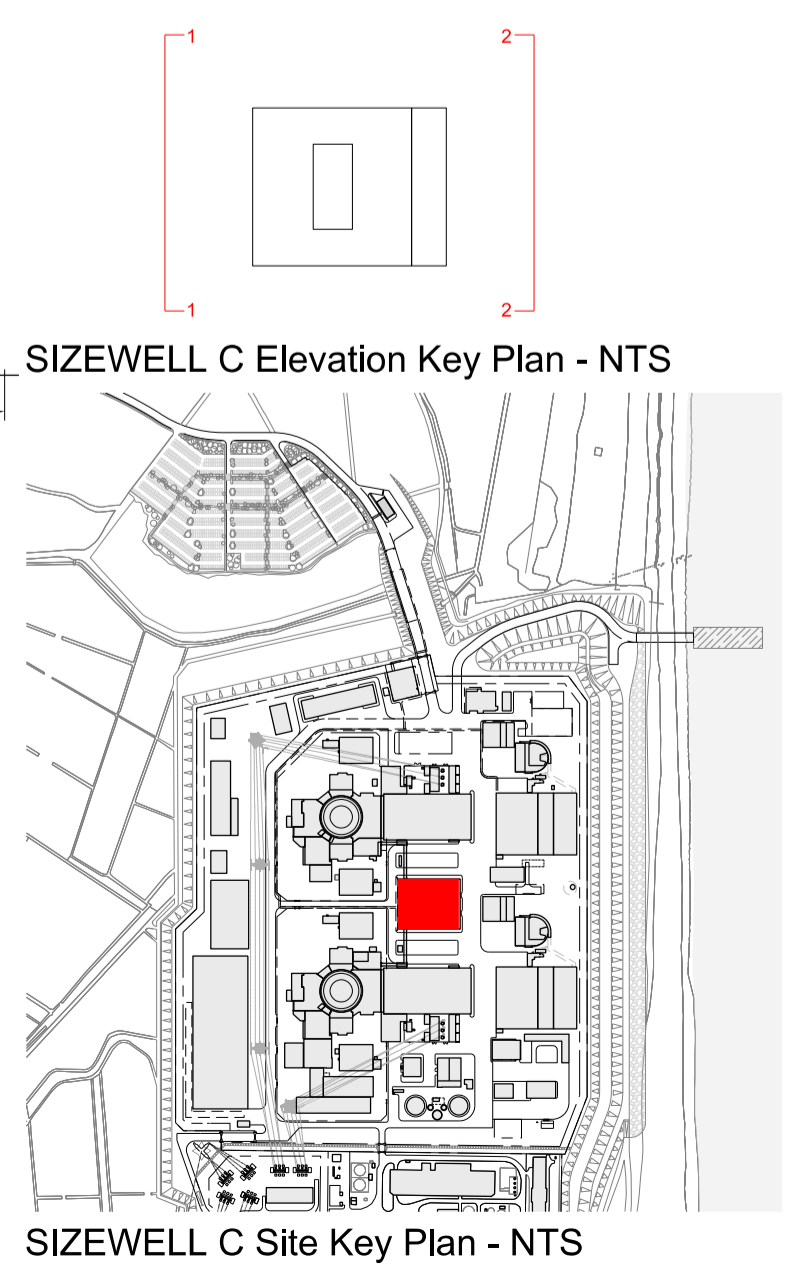




1 WEST ELEVATION  
SCALE 1:200



2 EAST ELEVATION  
SCALE 1:200



**NOTES:**

- Definitions: FFL - Finished Floor Level  
AOD - Above Ordnance Datum
- Platform level is defined as +7.30m AOD, an additional step of +0.20m locates the finished floor level of all buildings at +7.50m AOD.
- All dimensions are indicated to a tolerance of 0.5m.
- External projections including telecommunications infrastructure (including aerials and satellites), access structures and safety measures (including ladders and handrails), mechanical plant, utilities infrastructure (including solar panels) and minor architectural features (including gutters and lighting) are not shown and may be added subsequently.

- KEY:**
- Vertical Enclosure Wall**
- |                                     |                       |
|-------------------------------------|-----------------------|
| <b>1 Concrete / render finishes</b> | <b>5 Doors</b>        |
| 1.1 In-situ concrete                | 5.1 Metal door        |
| 1.2 Pre-cast concrete               | 5.2 Metal louvre door |
| 1.3 Render finish                   | 5.3 Glazed door       |
|                                     | 5.4 Access gates      |
- 2 Cladding**
- |   |   |
|---|---|
| 2.1 Aluminium standing seam               | <b>6 Window / metalwork accessories</b> |
| 2.2 Aluminium panels                      | 6.1 External fabric blinds              |
| 2.3 Aluminium fins                        | 6.2 Cavity venetian blinds              |
| 2.4 Profiled steel panels                 | 6.3 Glazed balustrade                   |
| 2.5 Flat steel panels                     | 6.4 Metal stairs and ladders            |
| 2.6 Fibre cement cladding                 | 6.5 Steel guardrail                     |
| 2.7 Glass reinforced plastic              |   |
| 2.8 Glassfibre reinforced concrete panels |   |
| 2.9 Anodised Aluminium panels             |   |
- 3 Glazing / translucent materials**
- |                                  |                        |
|----------------------------------|------------------------|
| 3.1 Glazed curtain wall          | <b>7 Roofing</b>       |
| 3.2 Frameless glazing            | 7.1 Sedum roof         |
| 3.3 Framed glazing               | 7.2 Ballast            |
| 3.4 Opaque glazed spandrel panel | 7.3 Standing seam roof |
|                                  | 7.4 Concrete roof      |
- 4 External wall features**
- |  |                                |
|--|--------------------------------|
| 4.1 Aluminium trims, copings and casings | <b>8 Roofing Accessories</b>   |
| 4.2 Aluminium louvres                    | 8.1 Roof light                 |
| 4.3 Steel louvres                        | 8.2 Roof vents and hatches     |
| 4.4 Aluminium brise-soleil               | 8.3 Metal cappings and copings |
| 4.5 Glass brise-soleil                   | 8.4 Paving                     |
| 4.6 Mesh expanded metal panels           | 8.5 PVs and solar panels       |
| 4.7 Fencing                              | 8.6 Timber decking             |
| 4.8 Barbed tape                          | 8.7 Roof Plant                 |
| 4.9 Retractable steel shutters           | 8.8 Steel Grid                 |
| 4.10 Wall vents and hatches              |                                |
| 4.11 Rainwater pipe and hopper           |                                |

01	FEB 20	GA	GA	DCO SUBMISSION	SZC Co
REVISION	DATE	DRAWN	CHECKED	REASONS FOR REVISION / COMMENTS	APPROVED

NOT PROTECTIVELY MARKED

**COPYRIGHT:**  
Reproduced from Ordnance Survey map with the permission of Ordnance Survey on behalf of the controller of Her Majesty's Stationery Office © Crown copyright (2019). All Rights reserved. NNB GenCo Licence: 0100060408



PROJECT:  
SIZEWELL C

DOCUMENT:  
APPLICATION DRAWING - FOR APPROVAL REGULATION 5(2)(c)

DRAWING TITLE:  
MAIN DEVELOPMENT SITE  
OPERATIONAL SERVICE CENTRE  
EAST & WEST ELEVATIONS

DRAWING NO: SZC-SZ0701-XX-000-DRW-100120 REVISION: 01

DATE: FEB 2020 DRAWN: EDH SCALE: 1:200 @ A1

