



# The Sizewell C Project

## 2.5 Main Development Site Cooling Water Pumphouse & Associated Buildings (Unit 1) Plans for Approval

September 2021

Planning Act 2008  
Infrastructure Planning (Applications: Prescribed Forms and Procedure) Regulations 2009

Revision: 2.0  
Applicable Regulation: Regulation 5(2)(o)  
PINS Reference Number: EN010012

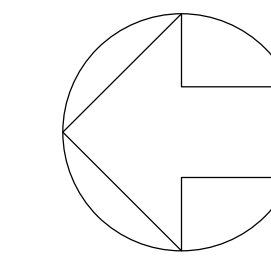


# Main Development Site, Cooling Water Pumphouse & Associated Buildings Plans (Unit 1) – For Approval

Drawing Number	Revision	Drawing Title	Scale	Sheet Size
<b>Unit 1: Cooling Water Pumphouse / Forebay / Outfall Pond Building / Filtering Debris Recovery Pit</b>				
SZC-SZ0701-XX-000-DRW-100121	02	Roof Plan	1:200	A0
SZC-SZ0701-XX-000-DRW-100122	02	Elevations	1:200	A0
<b>Unit 1: Fire-Fighting Water Distribution Building</b>				
SZC-SZ0701-XX-000-DRW-100123	02	Roof Plan & Elevations	1:200	A1

# Main Development Site Cooling Water Pumphouse & Associated Buildings Plans (Unit 1) For Approval – Revisions Schedule

Drawing Number	Revision	Drawing Title	Amendments
<b>Unit 1: Cooling Water Pumphouse / Forebay / Outfall Pond Building / Filtering Debris Recovery Pit</b>			
SZC-SZ0701-XX-000-DRW-100121	02	Roof Plan	Update to drawing title to ensure consistency with the DCO schedules
SZC-SZ0701-XX-000-DRW-100122	02	Elevations	Update to drawing title to ensure consistency with the DCO schedules
<b>Unit 1: Conventional Island Electrical Building</b>			
SZC-SZ0701-XX-000-DRW-100123	02	Roof Plan & Elevations	Update to drawing title to ensure consistency with the DCO schedules

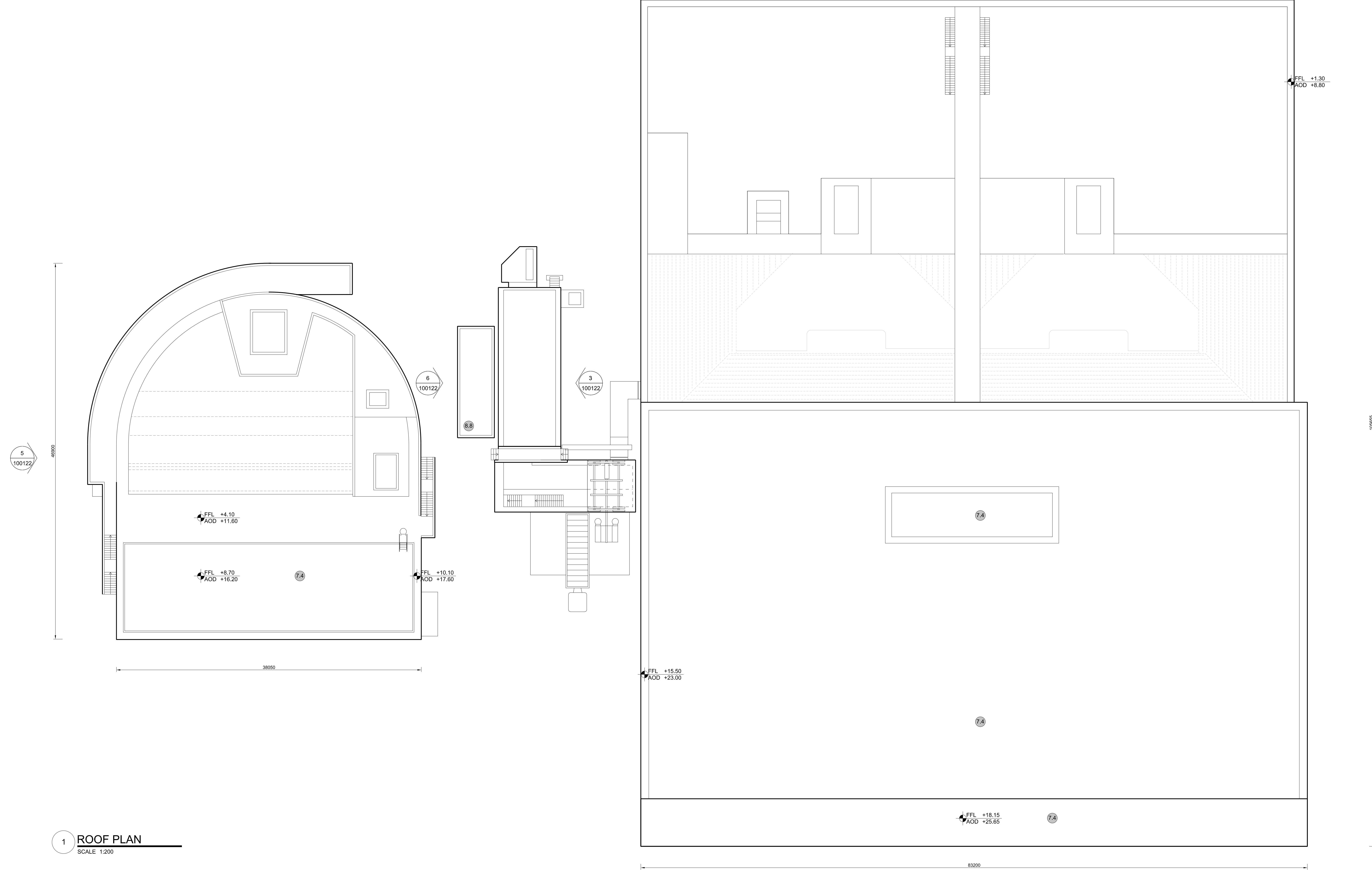


**NOTES:**

1. Definitions:  
FFL - Finished Floor Level  
AOD - Above Ordnance Datum
2. Platform level is defined as +7.30m AOD, an additional step of +0.20m locates the finished floor level of all buildings at +7.50m AOD.
3. All dimensions are indicated to a tolerance of 0.5m.
4. An additional 5m may be required to account for roof plant and machinery which may protrude above the stated roof height, see Sizewell C Design and Access Statement Chapter 7 for details.

**KEY:**

- |   |  |
|---|--|
| <p><b>Vertical Enclosure</b></p> <p><b>1 Concrete / render finishes</b></p> <p>1.1 In-situ concrete</p> <p>1.2 Pre-cast concrete</p> <p>1.3 Render finish</p> <p><b>2 Cladding</b></p> <p>2.1 Aluminium standing seam</p> <p>2.2 Aluminium panels</p> <p>2.3 Aluminium fins</p> <p>2.4 Profiled steel panels</p> <p>2.5 Flat steel panels</p> <p>2.6 Fibre cement cladding</p> <p>2.7 Glass reinforced plastic</p> <p>2.8 Glassfibre reinforced concrete panels</p> <p>2.9 Anodised Aluminium panels</p> <p><b>3 Glazing / translucent materials</b></p> <p>3.1 Glazed curtain wall</p> <p>3.2 Frameless glazing</p> <p>3.3 Framed glazing</p> <p>3.4 Opaque glazed spandrel panel</p> <p><b>4 External wall features</b></p> <p>4.1 Aluminium trims, copings and casings</p> <p>4.2 Aluminium louvres</p> <p>4.3 Steel louvres</p> <p>4.4 Aluminium brise-soleil</p> <p>4.5 Glass brise-soleil</p> <p>4.6 Mesh expanded metal panels</p> <p>4.7 Fencing</p> <p>4.8 Barbed tape</p> <p>4.9 Retractable steel shutters</p> <p>4.10 Wall vents and hatches</p> <p>4.11 Rainwater pipe and hopper</p> <p><b>5 Doors</b></p> <p>5.1 Metal door</p> <p>5.2 Metal louvre door</p> <p>5.3 Glazed door</p> <p>5.4 Access gates</p> <p><b>6 Window / metalwork accessories</b></p> <p>6.1 External fabric blinds</p> <p>6.2 Cavity venetian blinds</p> <p>6.3 Glazed balustrade</p> <p>6.4 Metal stairs and ladders</p> <p>6.5 Steel guardrail</p> | <p><b>Horizontal Enclosure</b></p> <p><b>7 Roofing</b></p> <p>7.1 Sedum roof</p> <p>7.2 Ballast</p> <p>7.3 Standing seam roof</p> <p>7.4 Concrete roof</p> <p><b>8 Roofing Accessories</b></p> <p>8.1 Roof light</p> <p>8.2 Roof vents and hatches</p> <p>8.3 Metal cappings and copings</p> <p>8.4 Paving</p> <p>8.5 PVs and solar panels</p> <p>8.6 Timber decking</p> <p>8.7 Roof Plant</p> <p>8.8 Steel Grid</p> |
|---|--|



**1 ROOF PLAN**  
SCALE 1:200

REV	NO	DATE	DRAWN	CHECKED	REASONS FOR REVISION / COMMENTS	APPROVED
02	SEP 21	GA	GA		DCO APPLICATION - DEADLINE 8 SUBMISSION (24 SEPTEMBER 2021)	SZC Co

**NOT PROTECTIVELY MARKED**

**COPYRIGHT:**  
 Reproduced from Ordnance Survey map with the permission of Ordnance Survey on behalf of the controller of Her Majesty's Stationery Office © Crown copyright (2019).  
 All Rights reserved. NNB GenCo Licence: 0100060408

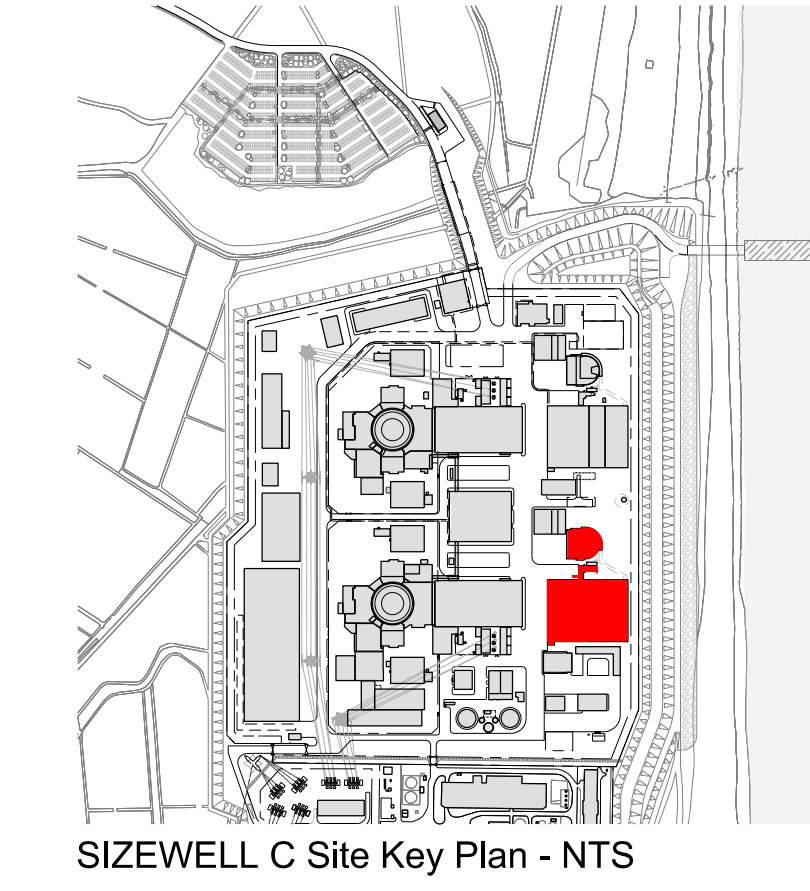
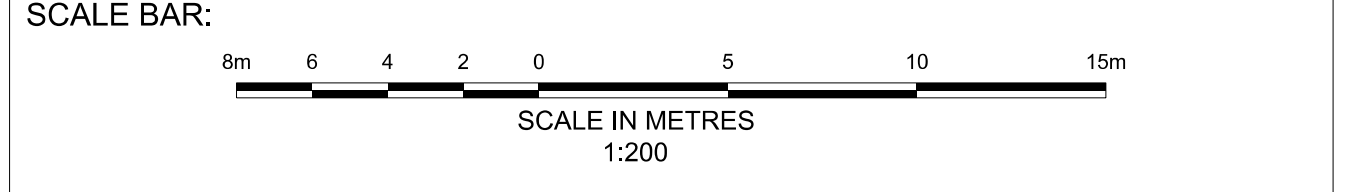


PROJECT:  
**SIZEWELL C**

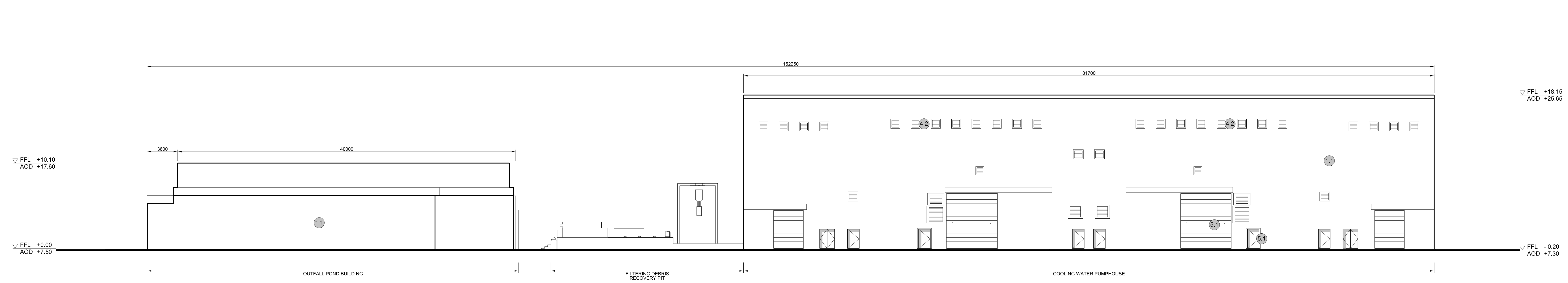
DOCUMENT:  
**APPLICATION DRAWING - FOR APPROVAL REGULATION 5(2)(o)**

DRAWING TITLE:  
**MAIN DEVELOPMENT SITE  
 UNIT 1: COOLING WATER PUMPHOUSE /  
 FOREBAY / OUTFALL POND BUILDING /  
 FILTERING DEBRIS RECOVERY PIT  
 ROOF PLAN**

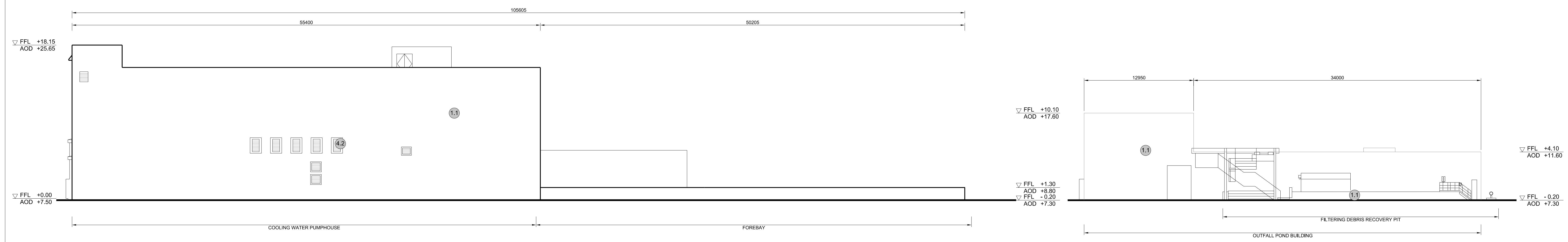
DRAWING NO: <b>SZC-SZ0701-XX-000-DRW-100121</b>	REVISION: <b>02</b>
DATE: <b>SEP 2020</b>	DRAWN: <b>EDH</b>
SCALE: <b>1:200 @ A0</b>	



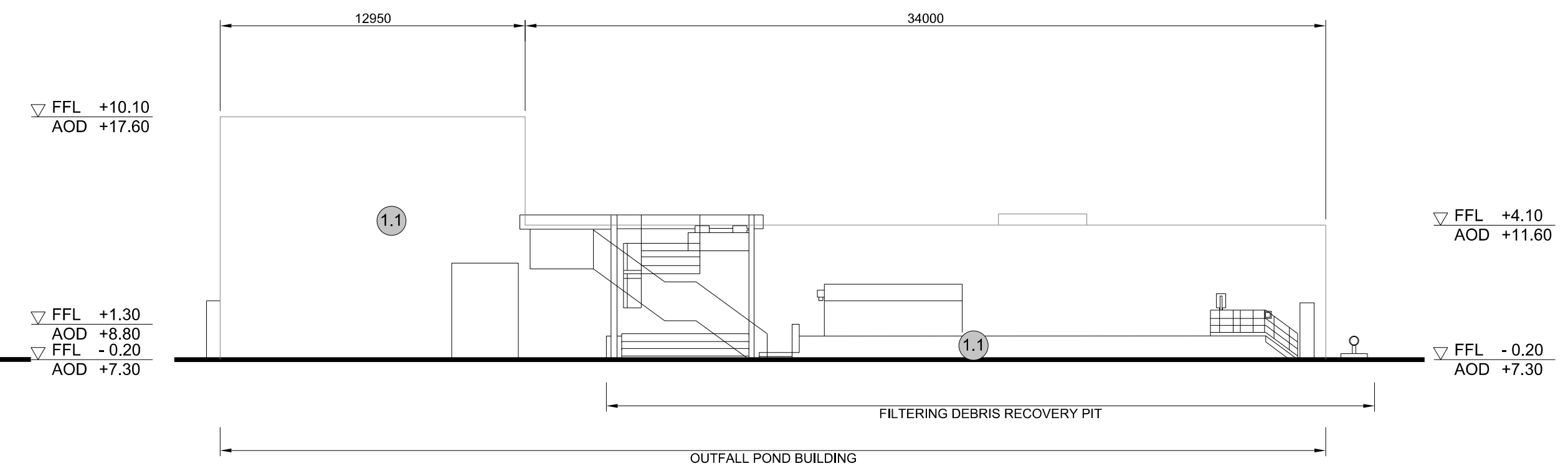
SIZEWELL C Site Key Plan - NTS



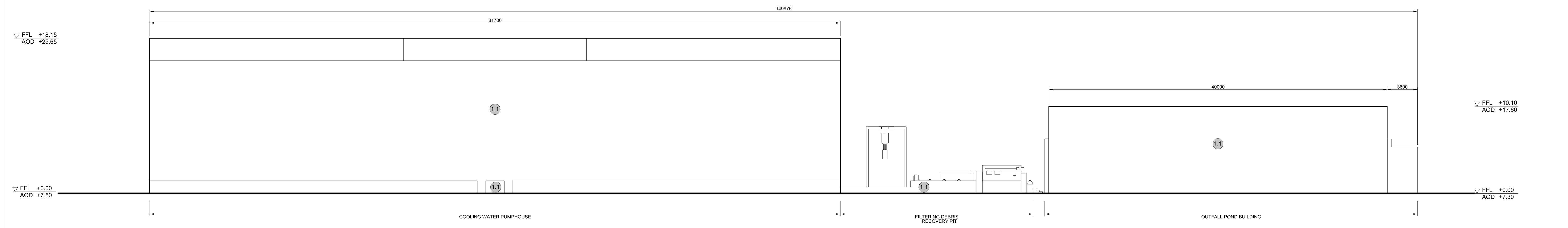
1 WEST ELEVATION  
SCALE 1:200



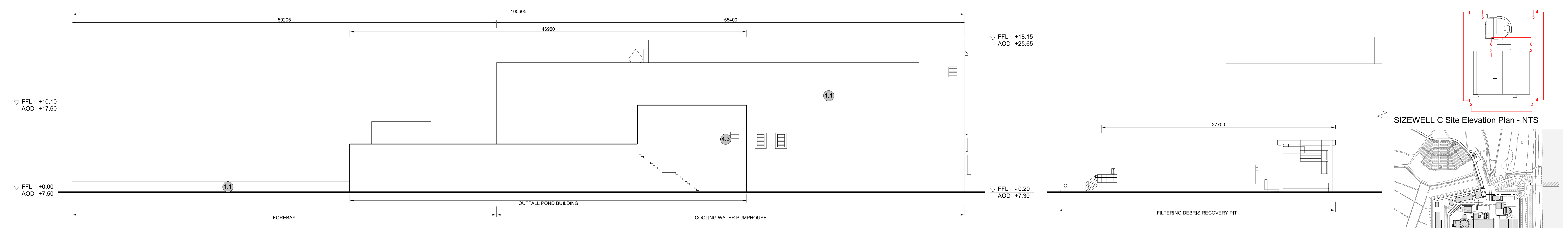
2 SOUTH ELEVATION  
SCALE 1:200



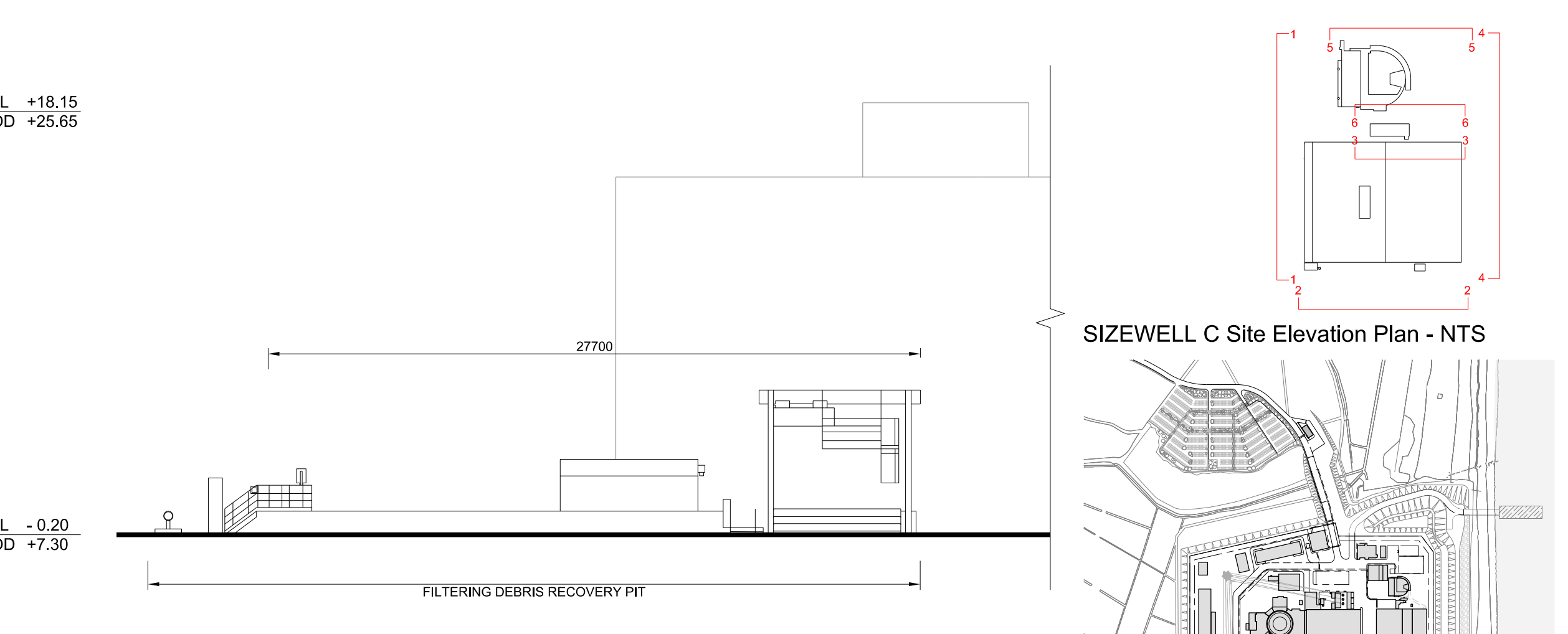
3 SOUTH ELEVATION FOR FILTERING DEBRIS RECOVERY PIT  
SCALE 1:200



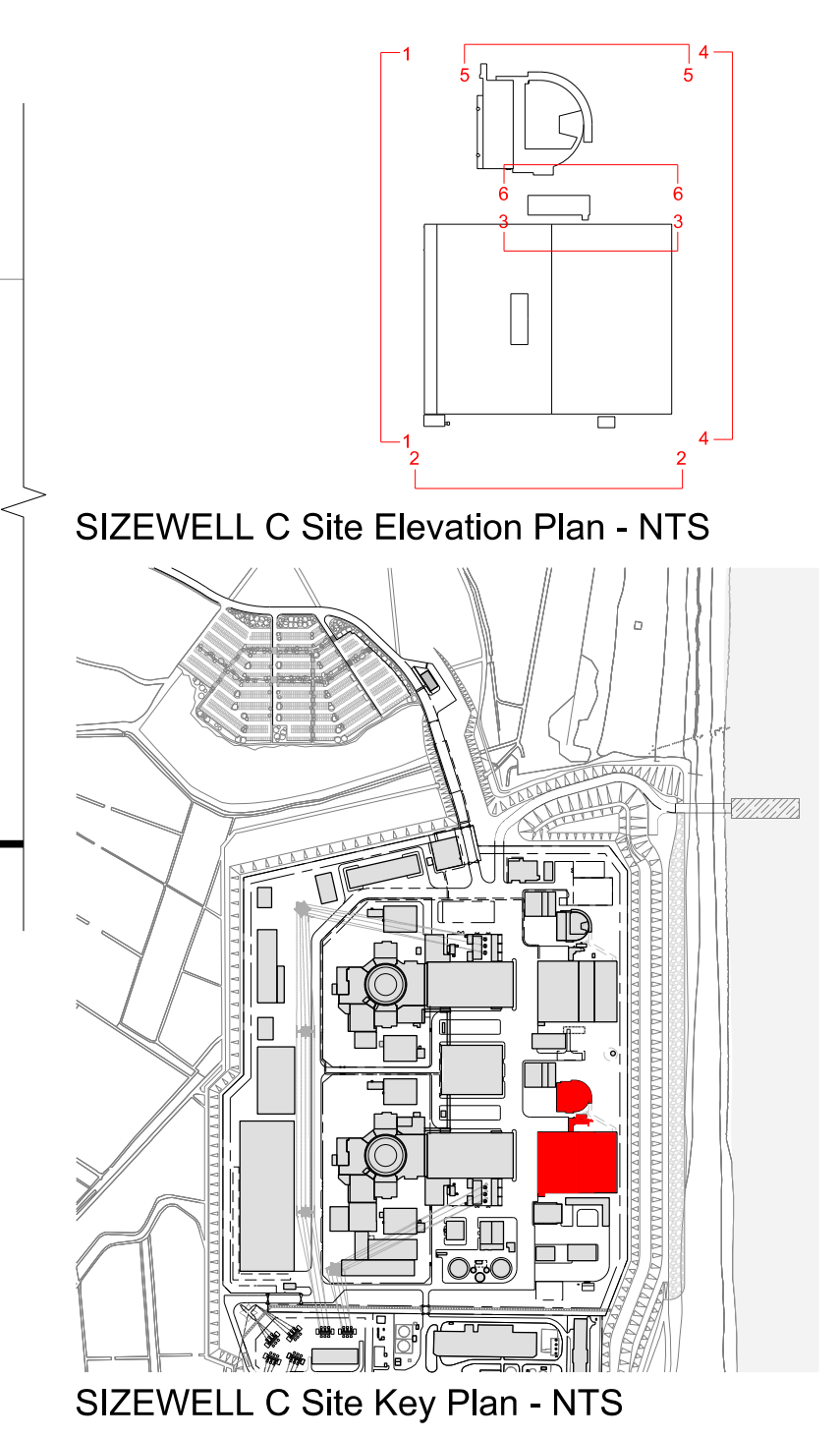
4 EAST ELEVATION  
SCALE 1:200



5 NORTH ELEVATION  
SCALE 1:200



6 NORTH ELEVATION FOR FILTERING DEBRIS RECOVERY PIT  
SCALE 1:200



SIZEWELL C Site Key Plan - NTS

- NOTES:**
- Definitions:  
FFL - Finished Floor Level  
AOD - Above Ordnance Datum
  - Platform level is defined as +7.30m AOD, an additional step of +0.20m locates the finished floor level of all buildings at +7.50m AOD.
  - All dimensions are indicated to a tolerance of 0.5m.
  - External projections including telecommunications infrastructure (including aerials and satellites), access structures and safety measures (including ladders and handrails), mechanical plant, utilities infrastructure (including solar panels) and minor architectural features (including gutters and lighting) are not shown and may be added subsequently.

- KEY:**
- |   |                                |
|---|--------------------------------|
| <b>Vertical Enclosure</b>                 | <b>Horizontal Enclosure</b>    |
| <b>Wall</b>                               | <b>Roof</b>                    |
| 1 Concrete / render finishes              | 7 Roofing                      |
| 1.1 In-situ concrete                      | 7.1 Sedum roof                 |
| 1.2 Pre-cast concrete                     | 7.2 Ballast                    |
| 1.3 Render finish                         | 7.3 Standing seam roof         |
|   | 7.4 Concrete roof              |
| <b>2 Cladding</b>                         | <b>8 Roofing Accessories</b>   |
| 2.1 Aluminium standing seam               | 8.1 Roof light                 |
| 2.2 Aluminium panels                      | 8.2 Roof vents and hatches     |
| 2.3 Aluminium fins                        | 8.3 Metal cappings and copings |
| 2.4 Profiled steel panels                 | 8.4 Paving                     |
| 2.5 Flat steel panels                     | 8.5 PVs and solar panels       |
| 2.6 Fibre cement cladding                 | 8.6 Timber decking             |
| 2.7 Glass reinforced plastic              | 8.7 Roof Plant                 |
| 2.8 Glassfibre reinforced concrete panels | 8.8 Steel Grid                 |
| 2.9 Anodised Aluminium panels             |                                |
| <b>3 Glazing / translucent materials</b>  |                                |
| 3.1 Glazed curtain wall                   |                                |
| 3.2 Frameless glazing                     |                                |
| 3.3 Framed glazing                        |                                |
| 3.4 Opaque glazed spandrel panel          |                                |
| <b>4 External wall features</b>           |                                |
| 4.1 Aluminium trims, copings and casings  |                                |
| 4.2 Aluminium louvres                     |                                |
| 4.3 Steel louvres                         |                                |
| 4.4 Aluminium brise-soleil                |                                |
| 4.5 Glass brise-soleil                    |                                |
| 4.6 Mesh expanded metal panels            |                                |
| 4.7 Fencing                               |                                |
| 4.8 Barbed tape                           |                                |
| 4.9 Retractable steel shutters            |                                |
| 4.10 Wall vents and hatches               |                                |
| 4.11 Rainwater pipe and hopper            |                                |
| <b>5 Doors</b>                            |                                |
| 5.1 Metal door                            |                                |
| 5.2 Metal louvre door                     |                                |
| 5.3 Glazed door                           |                                |
| 5.4 Access gates                          |                                |
| <b>6 Window / metalwork accessories</b>   |                                |
| 6.1 External fabric blinds                |                                |
| 6.2 Cavity venetian blinds                |                                |
| 6.3 Glazed balustrade                     |                                |
| 6.4 Metal stairs and ladders              |                                |
| 6.5 Steel guardrail                       |                                |

REV	DATE	BY	CHKD	REVISIONS / COMMENTS	APPROVED
02	SEP 21	GA	GA	DCO APPLICATION - DEADLINE 8 SUBMISSION (24 SEPTEMBER 2021)	SZC Co

NOT PROTECTIVELY MARKED

**COPYRIGHT:**  
Reproduced from Ordnance Survey map with the permission of Ordnance Survey on behalf of the controller of Her Majesty's Stationery Office © Crown copyright (2019).  
All Rights reserved. NNB GenCo Licence: 0100060408



PROJECT:  
**SIZEWELL C**

DOCUMENT:  
**APPLICATION DRAWING - FOR APPROVAL REGULATION 5(2)(o)**

DRAWING TITLE:  
**MAIN DEVELOPMENT SITE  
UNIT 1: COOLING WATER PUMPHOUSE /  
FOREBAY / OUTFALL POND BUILDING /  
FILTERING DEBRIS RECOVERY PIT  
ELEVATIONS**

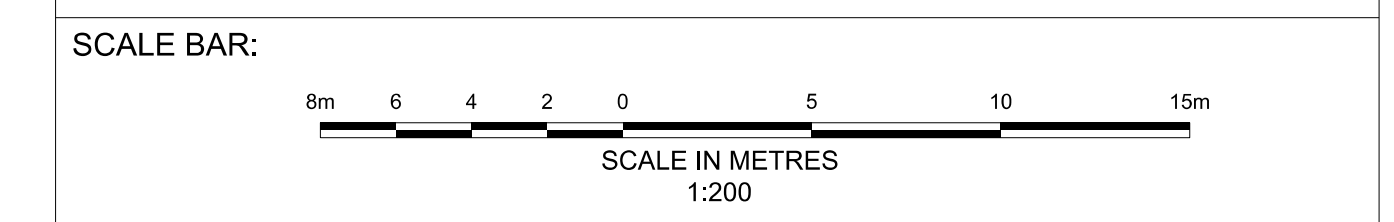
DRAWING NO:  
**SZC-SZ0701-XX-000-DRW-100122**

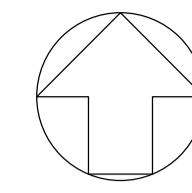
REVISION:  
**02**

DATE:  
**SEP 2021**

DRAWN:  
**EDH**

SCALE:  
**1:200 @ A0**

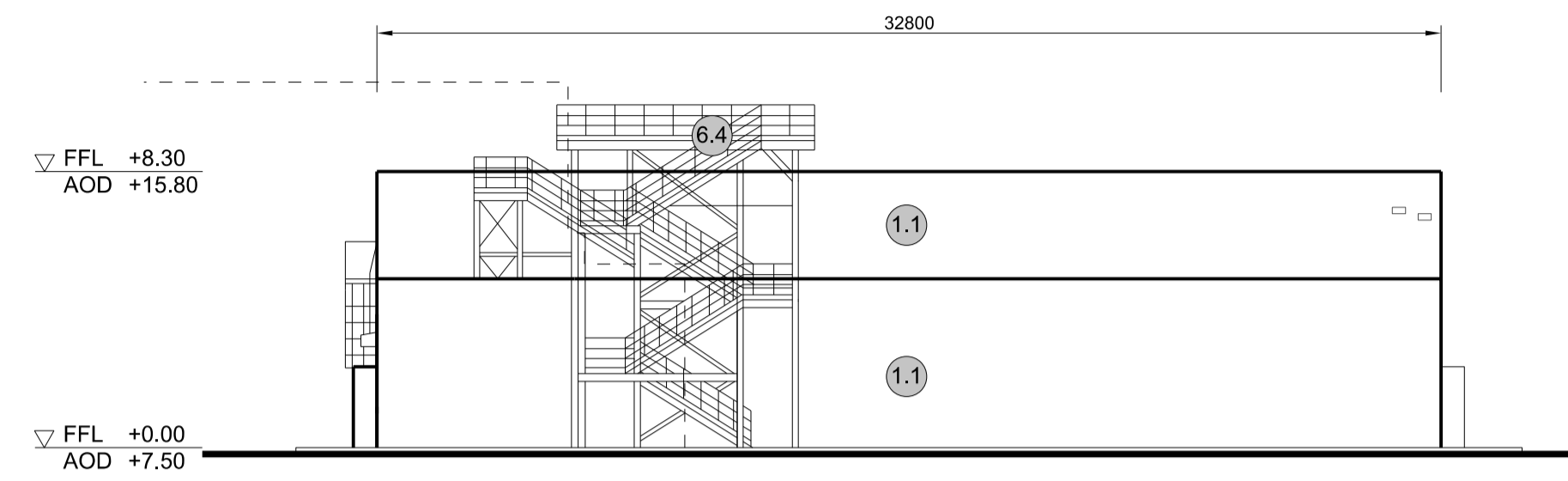




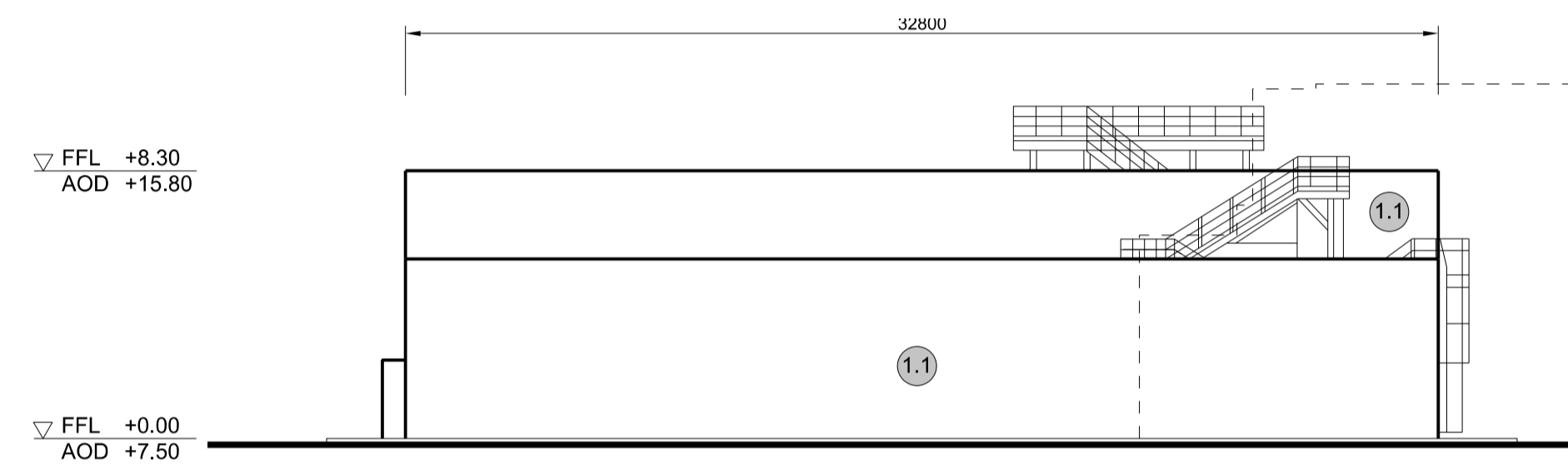
**NOTES:**

- Definitions: FFL - Finished Floor Level  
AOD - Above Ordnance Datum
- Platform level is defined as +7.30m AOD, an additional step of +0.20m locates the finished floor level of all buildings at +7.50m AOD.
- All dimensions are indicated to a tolerance of 0.5m.
- An additional 5m may be required to account for roof plant and machinery which may protrude above stated roof height, see Sizewell C Design and Access Statement for details.

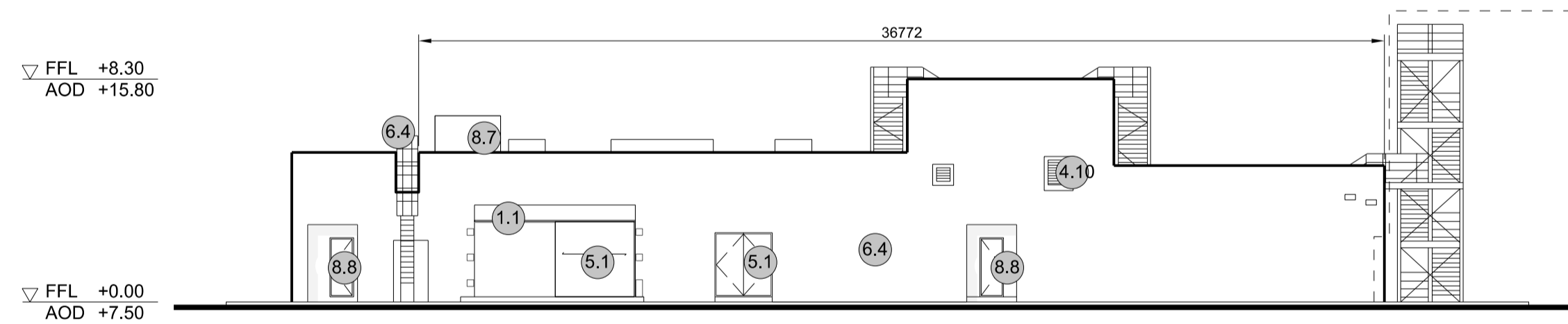
- KEY:**
- Vertical Enclosure Wall**
- |                                     |                       |
|-------------------------------------|-----------------------|
| <b>1 Concrete / render finishes</b> | <b>5 Doors</b>        |
| 1.1 In-situ concrete                | 5.1 Metal door        |
| 1.2 Pre-cast concrete               | 5.2 Metal louvre door |
| 1.3 Render finish                   | 5.3 Glazed door       |
|                                     | 5.4 Access gates      |
- 2 Cladding**
- |   |   |
|---|---|
| 2.1 Aluminium standing seam               | <b>6 Window / metalwork accessories</b> |
| 2.2 Aluminium panels                      | 6.1 External fabric blinds              |
| 2.3 Aluminium fins                        | 6.2 Cavity venetian blinds              |
| 2.4 Profiled steel panels                 | 6.3 Glazed balustrade                   |
| 2.5 Flat steel panels                     | 6.4 Metal stairs and ladders            |
| 2.6 Fibre cement cladding                 | 6.5 Steel guardrail                     |
| 2.7 Glass reinforced plastic              |   |
| 2.8 Glassfibre reinforced concrete panels |   |
| 2.9 Anodised Aluminium panels             |   |
- 3 Glazing / translucent materials**
- |                                  |                                  |
|----------------------------------|----------------------------------|
| 3.1 Glazed curtain wall          | <b>Horizontal Enclosure Roof</b> |
| 3.2 Frameless glazing            | <b>7 Roofing</b>                 |
| 3.3 Framed glazing               | 7.1 Sedum roof                   |
| 3.4 Opaque glazed spandrel panel | 7.2 Ballast                      |
|                                  | 7.3 Standing seam roof           |
|                                  | 7.4 Concrete roof                |
- 4 External wall features**
- |  |                                |
|--|--------------------------------|
| 4.1 Aluminium trims, copings and casings | <b>8 Roofing Accessories</b>   |
| 4.2 Aluminium louvres                    | 8.1 Roof light                 |
| 4.3 Steel louvres                        | 8.2 Roof vents and hatches     |
| 4.4 Aluminium brise-soleil               | 8.3 Metal cappings and copings |
| 4.5 Glass brise-soleil                   | 8.4 Paving                     |
| 4.6 Mesh expanded metal panels           | 8.5 PVs and solar panels       |
| 4.7 Fencing                              | 8.6 Timber decking             |
| 4.8 Barbed tape                          | 8.7 Roof Plant                 |
| 4.9 Retractable steel shutters           | 8.8 Steel Grid                 |
| 4.10 Wall vents and hatches              |                                |
| 4.11 Rainwater pipe and hopper           |                                |



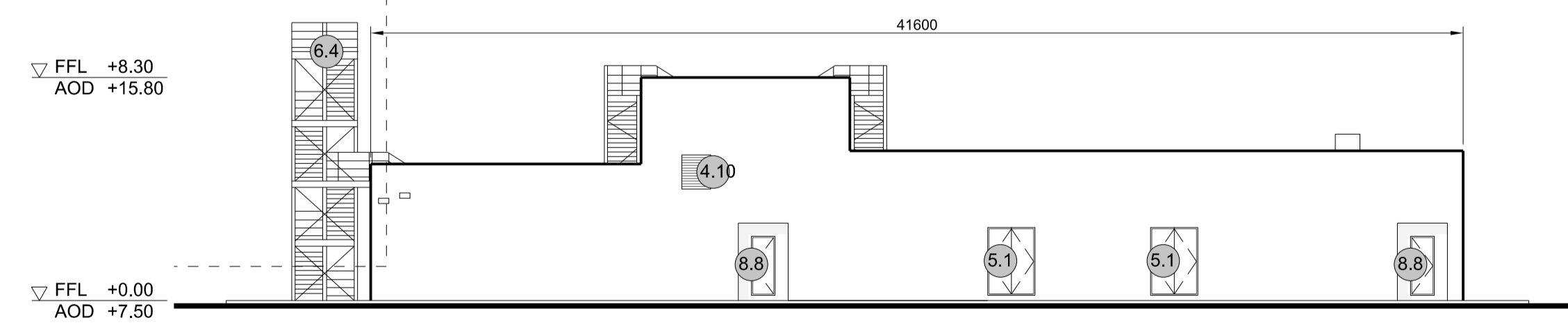
**2 EAST ELEVATION**  
SCALE 1:200



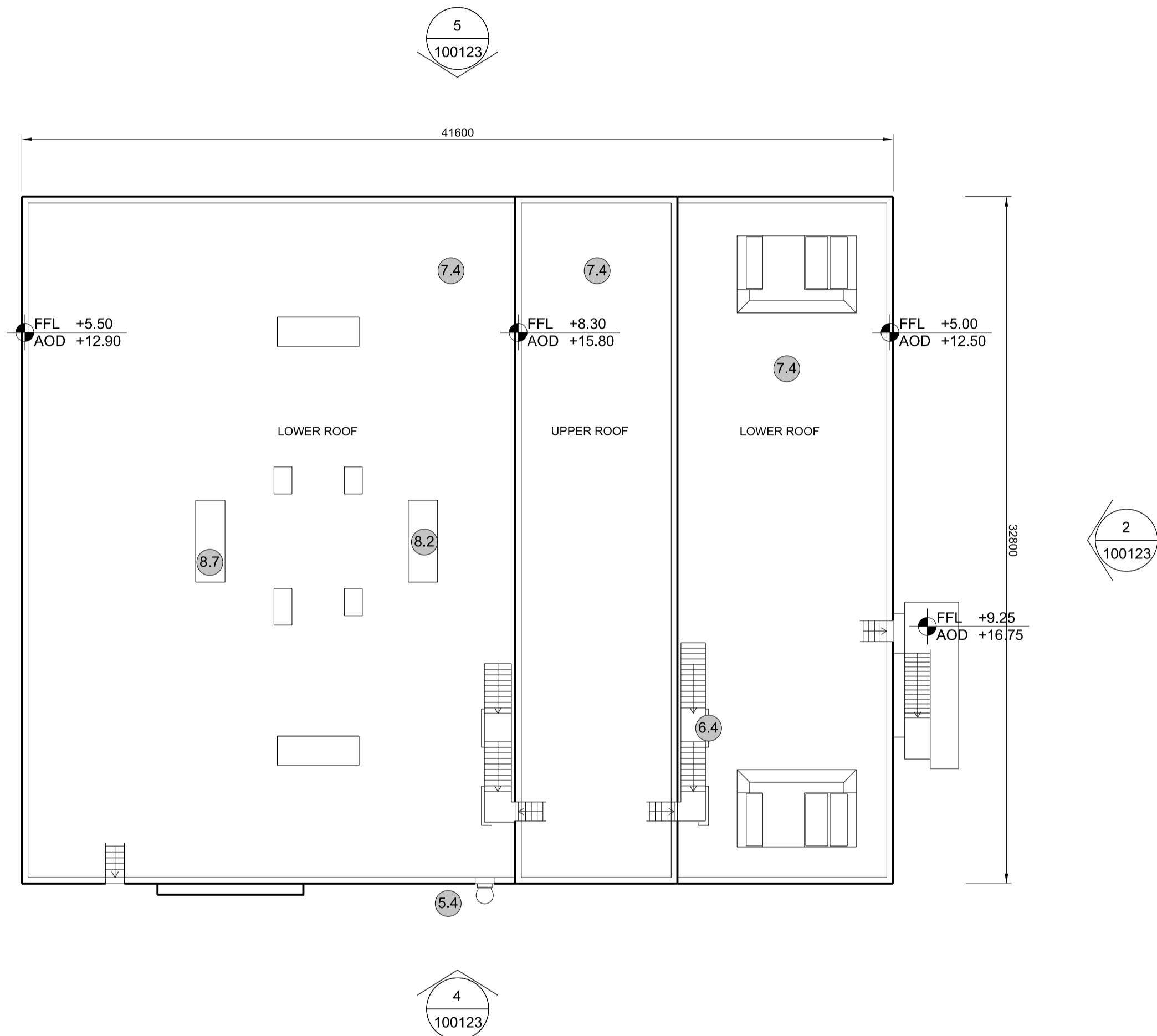
**3 WEST ELEVATION**  
SCALE 1:200



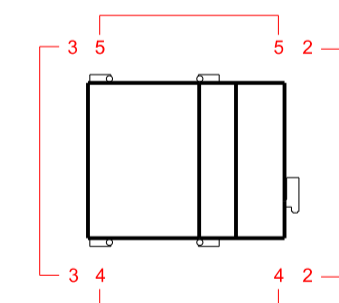
**4 SOUTH ELEVATION**  
SCALE 1:200



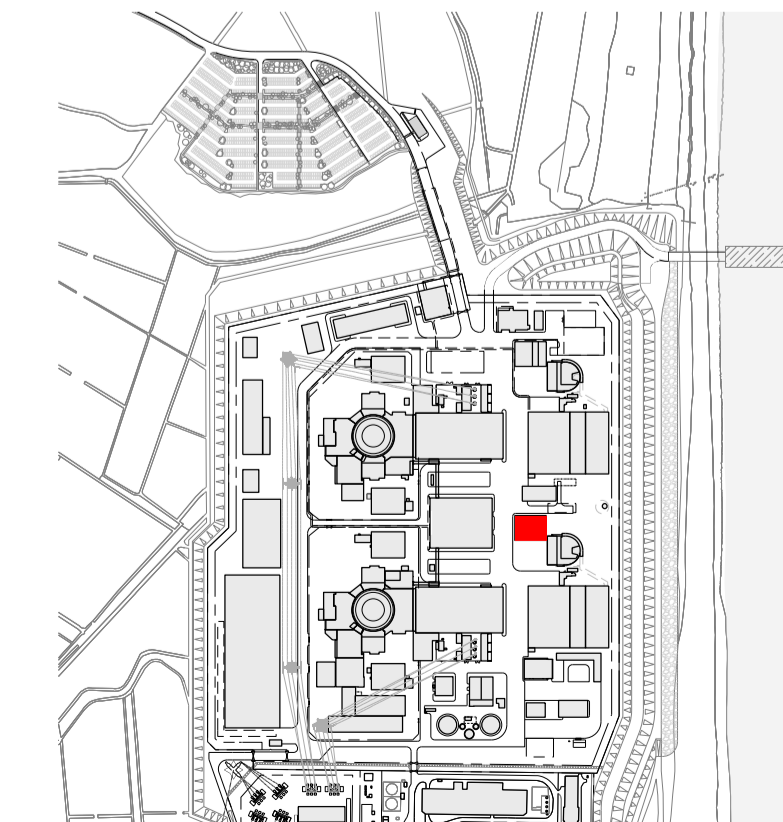
**5 NORTH ELEVATION**  
SCALE 1:200



**1 ROOF PLAN**  
SCALE 1:200



SIZEWELL C Elevation Key Plan - NTS



SIZEWELL C Site Key Plan - NTS

02	SEP 21	GA	GA	DCO APPLICATION - DEADLINE 8 SUBMISSION (24 SEPTEMBER 2021)	SZC Co
REVISION	DATE	DRAWN/CHECKED	REASONS FOR REVISION / COMMENTS		APPROVED

NOT PROTECTIVELY MARKED

**COPYRIGHT:**  
Reproduced from Ordnance Survey map with the permission of Ordnance Survey on behalf of the controller of Her Majesty's Stationery Office © Crown copyright (2019). All Rights reserved. NNB GenCo Licence: 0100060408



PROJECT:  
SIZEWELL C

DOCUMENT:  
APPLICATION DRAWING - FOR APPROVAL REGULATION 5(2)(c)

DRAWING TITLE:  
MAIN DEVELOPMENT SITE  
UNIT 1: FIRE-FIGHTING WATER  
DISTRIBUTION BUILDING  
ROOF PLAN & ELEVATIONS

DRAWING NO: SZC-SZ0701-XX-000-DRW-100123 REVISION: 02

DATE: SEP 2021 DRAWN: CH SCALE: 1:200 @ A1

