



The Sizewell C Project

2.5 Main Development Site Cooling Water Pumphouse & Associated Buildings (Unit 2) Plans for Approval

September 2021

Planning Act 2008
Infrastructure Planning (Applications: Prescribed Forms and Procedure) Regulations 2009

Revision: 2.0
Applicable Regulation: Regulation 5(2)(o)
PINS Reference Number: EN010012

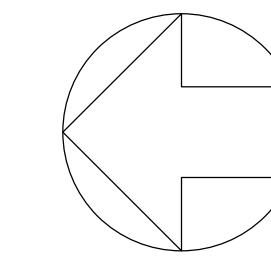


Main Development Site, Cooling Water Pumphouse & Associated Buildings Plans (Unit 2) – For Approval

| Drawing Number | Revision | Drawing Title | Scale | Sheet Size |
|--|----------|------------------------|-------|------------|
| Unit 2: Cooling Water Pumphouse / Forebay / Outfall Pond Building / Filtering Debris Recovery Pit | | | | |
| SZC-SZ0701-XX-000-DRW-100124 | 02 | Roof Plan | 1:200 | A0 |
| SZC-SZ0701-XX-000-DRW-100125 | 02 | Elevations | 1:200 | A0 |
| Unit 2: Fire-Fighting Water Distribution Building | | | | |
| SZC-SZ0701-XX-000-DRW-100127 | 02 | Roof Plan & Elevations | 1:200 | A1 |

Main Development Site Cooling Water Pumphouse & Associated Buildings Plans (Unit 2) For Approval – Revisions Schedule

| Drawing Number | Revision | Drawing Title | Amendments |
|--|----------|------------------------|--|
| Unit 2: Cooling Water Pumphouse / Forebay / Outfall Pond Building / Filtering Debris Recovery Pit | | | |
| SZC-SZ0701-XX-000-DRW-100124 | 02 | Roof Plan | Update to drawing title to ensure consistency with the DCO schedules |
| SZC-SZ0701-XX-000-DRW-100125 | 02 | Elevations | Update to drawing title to ensure consistency with the DCO schedules |
| Unit 2: Conventional Island Electrical Building | | | |
| SZC-SZ0701-XX-000-DRW-100127 | 02 | Roof Plan & Elevations | Update to drawing title to ensure consistency with the DCO schedules |

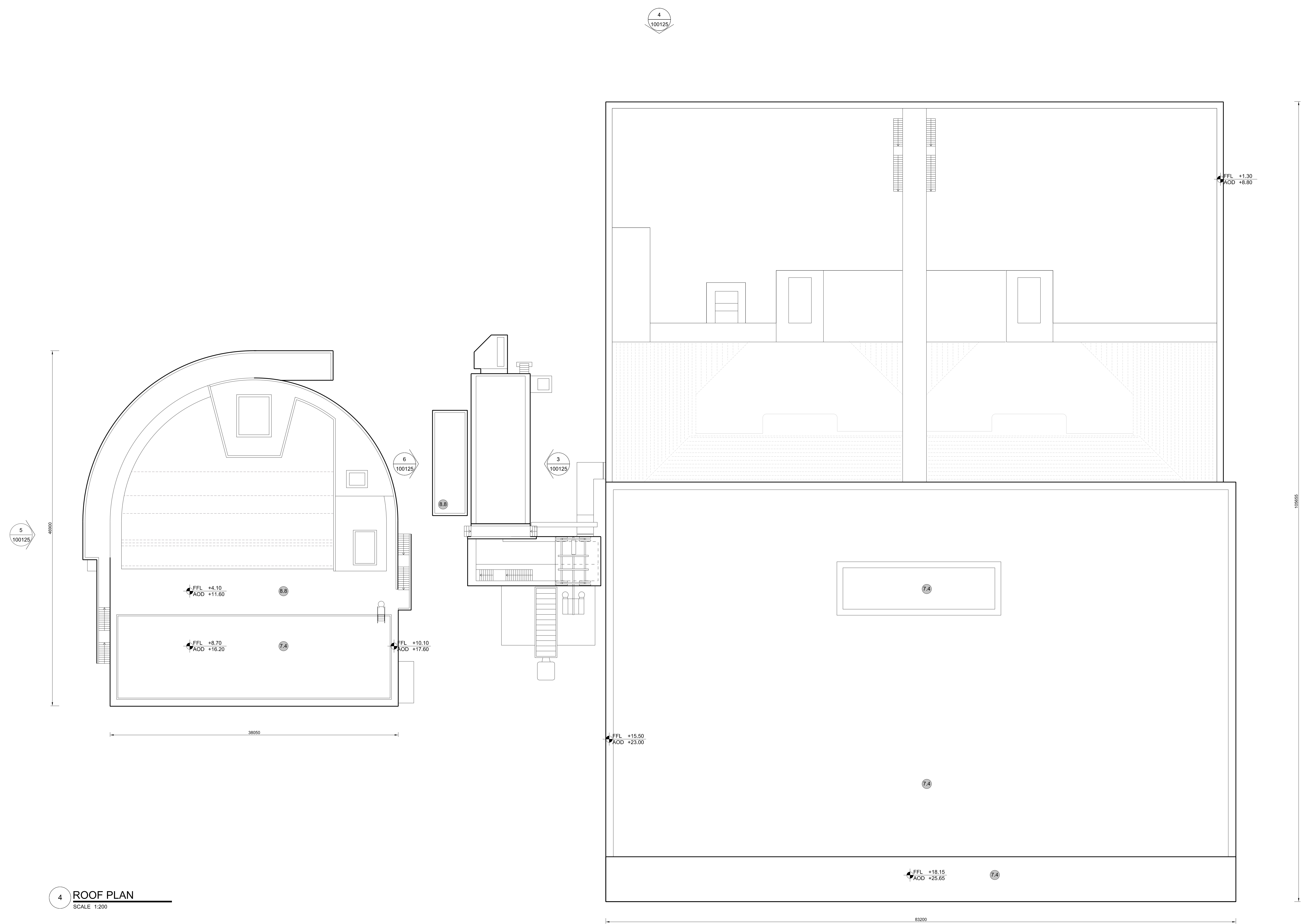


NOTES:

- Definitions:
FFL - Finished Floor Level
AOD - Above Ordnance Datum
- Platform level is defined as +7.30m AOD, an additional step of +0.20m locates the finished floor level of all buildings at +7.50m AOD.
- All dimensions are indicated to a tolerance of 0.5m.
- An additional 5m may be required to account for roof plant and machinery which may protrude above the stated roof height, see Sizewell C Design and Access Statement Chapter 7 for details.

KEY:

- | | |
|---|--------------------------------|
| Vertical Enclosure | Horizontal Enclosure |
| Wall | Roof |
| 1 Concrete / render finishes | 7 Roofing |
| 1.1 In-situ concrete | 7.1 Sedum roof |
| 1.2 Pre-cast concrete | 7.2 Ballast |
| 1.3 Render finish | 7.3 Standing seam roof |
| | 7.4 Concrete roof |
| 2 Cladding | 8 Roofing Accessories |
| 2.1 Aluminium standing seam | 8.1 Roof light |
| 2.2 Aluminium panels | 8.2 Roof vents and hatches |
| 2.3 Aluminium fins | 8.3 Metal cappings and copings |
| 2.4 Profiled steel panels | 8.4 Paving |
| 2.5 Flat steel panels | 8.5 PVs and solar panels |
| 2.6 Fibre cement cladding | 8.6 Timber decking |
| 2.7 Glass reinforced plastic | 8.7 Roof Plant |
| 2.8 Glassfibre reinforced concrete panels | 8.8 Steel Grid |
| 2.9 Anodised Aluminium panels | |
| 3 Glazing / translucent materials | |
| 3.1 Glazed curtain wall | |
| 3.2 Frameless glazing | |
| 3.3 Framed glazing | |
| 3.4 Opaque glazed spandrel panel | |
| 4 External wall features | |
| 4.1 Aluminium trims, copings and casings | |
| 4.2 Aluminium louvres | |
| 4.3 Steel louvres | |
| 4.4 Aluminium brise-soleil | |
| 4.5 Glass brise-soleil | |
| 4.6 Mesh expanded metal panels | |
| 4.7 Fencing | |
| 4.8 Barbed tape | |
| 4.9 Retractable steel shutters | |
| 4.10 Wall vents and hatches | |
| 4.11 Rainwater pipe and hopper | |
| 5 Doors | |
| 5.1 Metal door | |
| 5.2 Metal louvre door | |
| 5.3 Glazed door | |
| 5.4 Access gates | |
| 6 Window / metalwork accessories | |
| 6.1 External fabric blinds | |
| 6.2 Cavity venetian blinds | |
| 6.3 Glazed balustrade | |
| 6.4 Metal stairs and ladders | |
| 6.5 Steel guardrail | |



4 ROOF PLAN
SCALE 1:200

| REV | DATE | DRAWN | CHECKED | REASONS FOR REVISION / COMMENTS | APPROVED |
|-----|--------|-------|---------|---|----------|
| 02 | SEP 21 | GA | GA | DCO APPLICATION - DEADLINE 8 SUBMISSION (24 SEPTEMBER 2021) | SZC Co |

NOT PROTECTIVELY MARKED

COPYRIGHT:
 Reproduced from Ordnance Survey map with the permission of Ordnance Survey on behalf of the controller of Her Majesty's Stationery Office © Crown copyright (2019).
 All Rights reserved. NNB GenCo Licence: 0100060408



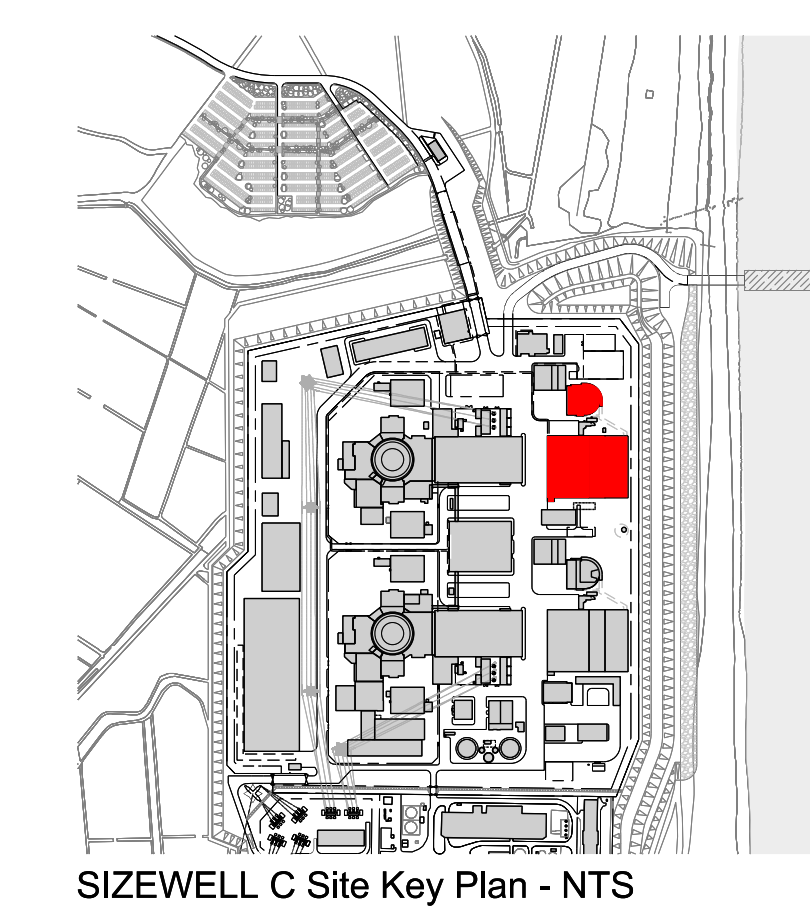
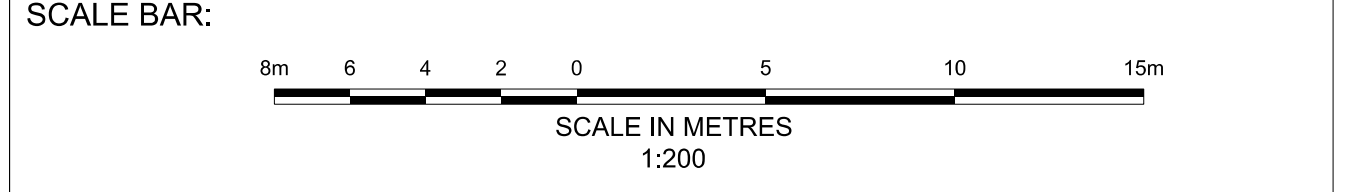
PROJECT:
SIZEWELL C

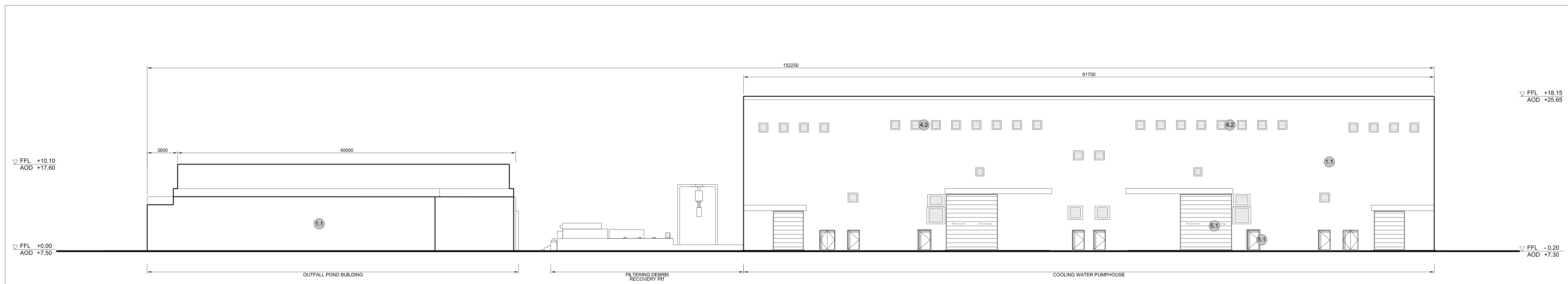
DOCUMENT:
APPLICATION DRAWING - FOR APPROVAL REGULATION 5(2)(o)

DRAWING TITLE:
 MAIN DEVELOPMENT SITE
 UNIT 2: COOLING WATER PUMPHOUSE / FOREBAY / OUTFALL POND BUILDING / FILTERING DEBRIS RECOVERY PIT
 ROOF PLAN

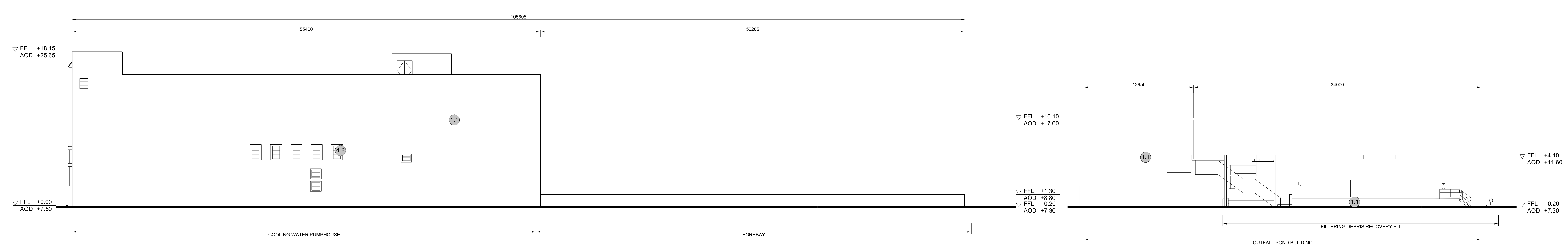
| | |
|--|------------------------|
| DRAWING NO: SZC-SZ0701-XX-000-DRW-100124 | REVISION: 02 |
|--|------------------------|

| | | |
|--------------------------|---------------------|-----------------------------|
| DATE: SEP 2021 | DRAWN: CH | SCALE: 1:200 @ A0 |
|--------------------------|---------------------|-----------------------------|



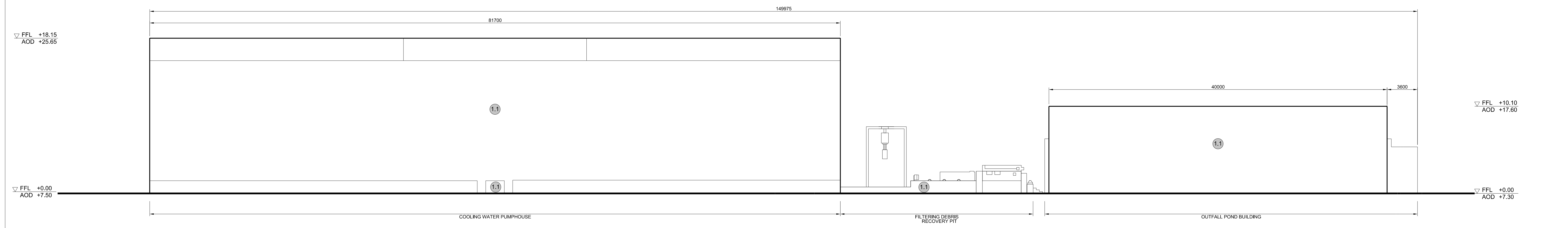


1 WEST ELEVATION
SCALE 1:200

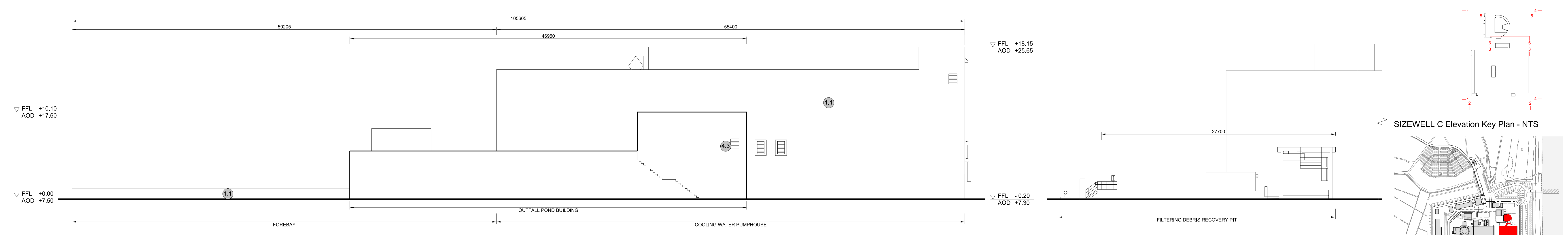


2 SOUTH ELEVATION
SCALE 1:200

3 SOUTH ELEVATION FOR FILTERING DEBRIS RECOVERY PIT
SCALE 1:200

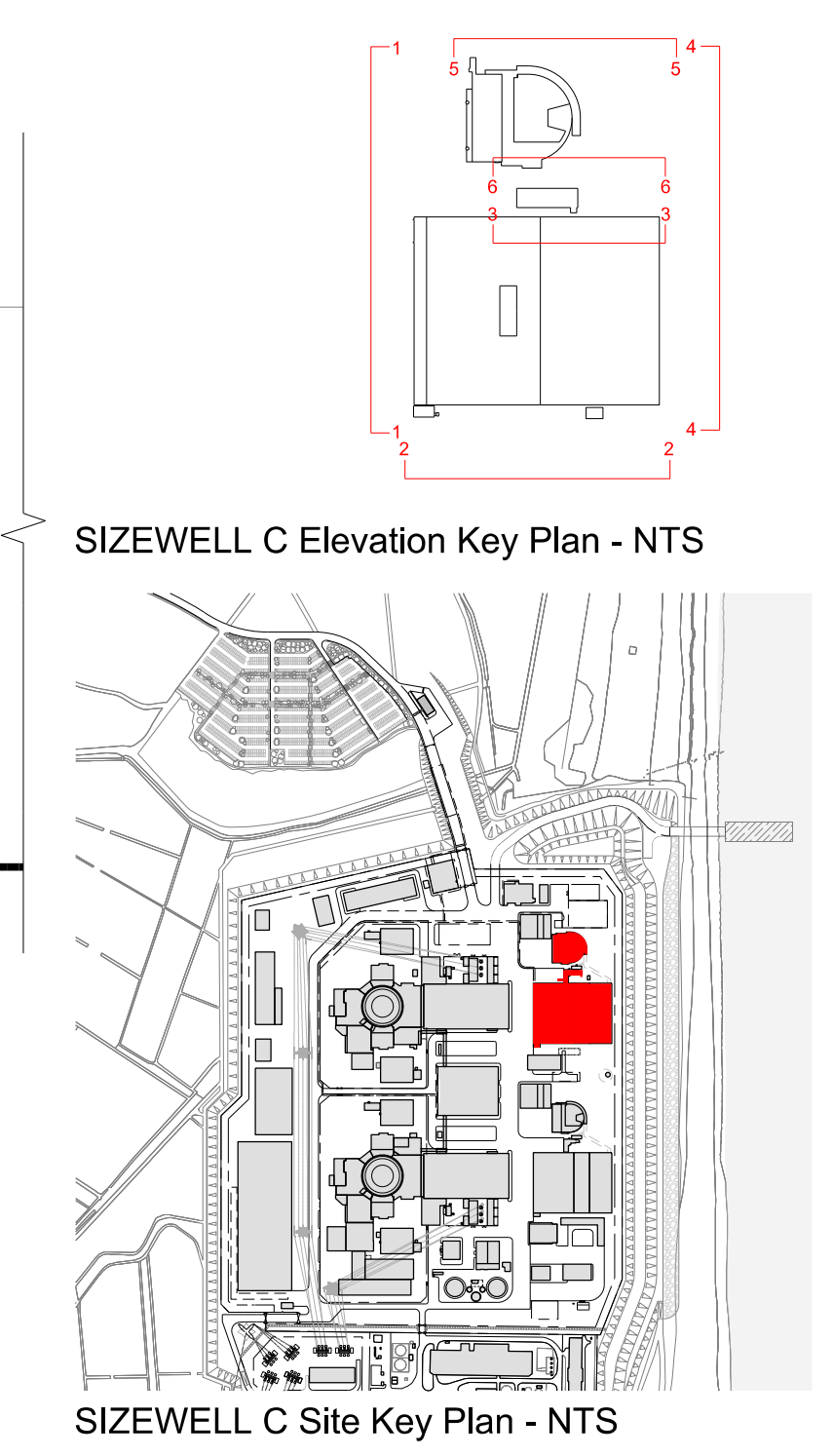


4 EAST ELEVATION
SCALE 1:200



5 NORTH ELEVATION
SCALE 1:200

6 NORTH ELEVATION FOR FILTERING DEBRIS RECOVERY PIT
SCALE 1:200



SIZEWELL C Elevation Key Plan - NTS

SIZEWELL C Site Key Plan - NTS

- NOTES:**
- Definitions:
FFL - Finished Floor Level
AOD - Above Ordnance Datum
 - Platform level is defined as +7.30m AOD, an additional step of +0.20m locates the finished floor level of all buildings at +7.50m AOD.
 - All dimensions are indicated to a tolerance of 0.5m.
 - External projections including telecommunications infrastructure (including aerials and satellites), access structures and safety measures (including ladders and handrails), mechanical plant, utilities infrastructure (including solar panels) and minor architectural features (including gutters and lighting) are not shown and may be added subsequently.

- KEY:**
- | | |
|---|--------------------------------|
| Vertical Enclosure | Horizontal Enclosure |
| Wall | Roof |
| 1 Concrete / render finishes | 7 Roofing |
| 1.1 In-situ concrete | 7.1 Sedum roof |
| 1.2 Pre-cast concrete | 7.2 Ballast |
| 1.3 Render finish | 7.3 Standing seam roof |
| | 7.4 Concrete roof |
| Cladding | Roofing Accessories |
| 2.1 Aluminium standing seam | 8.1 Roof light |
| 2.2 Aluminium panels | 8.2 Roof vents and hatches |
| 2.3 Aluminium fins | 8.3 Metal cappings and copings |
| 2.4 Profiled steel panels | 8.4 Paving |
| 2.5 Flat steel panels | 8.5 PVs and solar panels |
| 2.6 Fibre cement cladding | 8.6 Timber decking |
| 2.7 Glass reinforced plastic | 8.7 Roof Plant |
| 2.8 Glassfibre reinforced concrete panels | 8.8 Steel Grid |
| 2.9 Anodised Aluminium panels | |
| Glazing / translucent materials | |
| 3.1 Glazed curtain wall | |
| 3.2 Frameless glazing | |
| 3.3 Framed glazing | |
| 3.4 Opaque glazed spandrel panel | |
| External wall features | |
| 4.1 Aluminium trims, copings and casings | |
| 4.2 Aluminium louvres | |
| 4.3 Steel louvres | |
| 4.4 Aluminium brise-soleil | |
| 4.5 Glass brise-soleil | |
| 4.6 Mesh expanded metal panels | |
| 4.7 Fencing | |
| 4.8 Barbed tape | |
| 4.9 Retractable steel shutters | |
| 4.10 Wall vents and hatches | |
| 4.11 Rainwater pipe and hopper | |
| Doors | |
| 5.1 Metal door | |
| 5.2 Metal louvre door | |
| 5.3 Glazed door | |
| 5.4 Access gates | |
| Window / metalwork accessories | |
| 6.1 External fabric blinds | |
| 6.2 Cavity venetian blinds | |
| 6.3 Glazed balustrade | |
| 6.4 Metal stairs and ladders | |
| 6.5 Steel guardrail | |

| | | | | | |
|----------|--------|-------|---------|---|----------|
| 02 | SEP 21 | GA | GA | DCO APPLICATION - DEADLINE 8 SUBMISSION (24 SEPTEMBER 2021) | SZC Co |
| REVISION | DATE | DRAWN | CHECKED | REASONS FOR REVISION / COMMENTS | APPROVED |

NOT PROTECTIVELY MARKED

COPYRIGHT:
Reproduced from Ordnance Survey map with the permission of Ordnance Survey on behalf of the controller of Her Majesty's Stationery Office © Crown copyright (2019).
All Rights reserved. NNB GenCo Licence: 0100060408



PROJECT:
SIZEWELL C

DOCUMENT:
APPLICATION DRAWING - FOR APPROVAL REGULATION 5(2)(o)

DRAWING TITLE:
**MAIN DEVELOPMENT SITE
UNIT 2: COOLING WATER PUMPHOUSE /
FOREBAY / OUTFALL POND BUILDING /
FILTERING DEBRIS RECOVERY PIT
ELEVATIONS**

DRAWING NO:
SZC-SZ0701-XX-000-DRW-100125

REVISION:
02

DATE: **SEP 2021** DRAWN: **CH** SCALE: **1:200 @ A0**

