



The Sizewell C Project

2.5 Main Development Site
Conventional Island (Unit 1)
Plans For Approval

September 2021

Planning Act 2008
Infrastructure Planning (Applications: Prescribed Forms and Procedure) Regulations 2009

Revision: 2.0
Applicable Regulation: Regulation 5(2)(o)
PINS Reference Number: EN010012

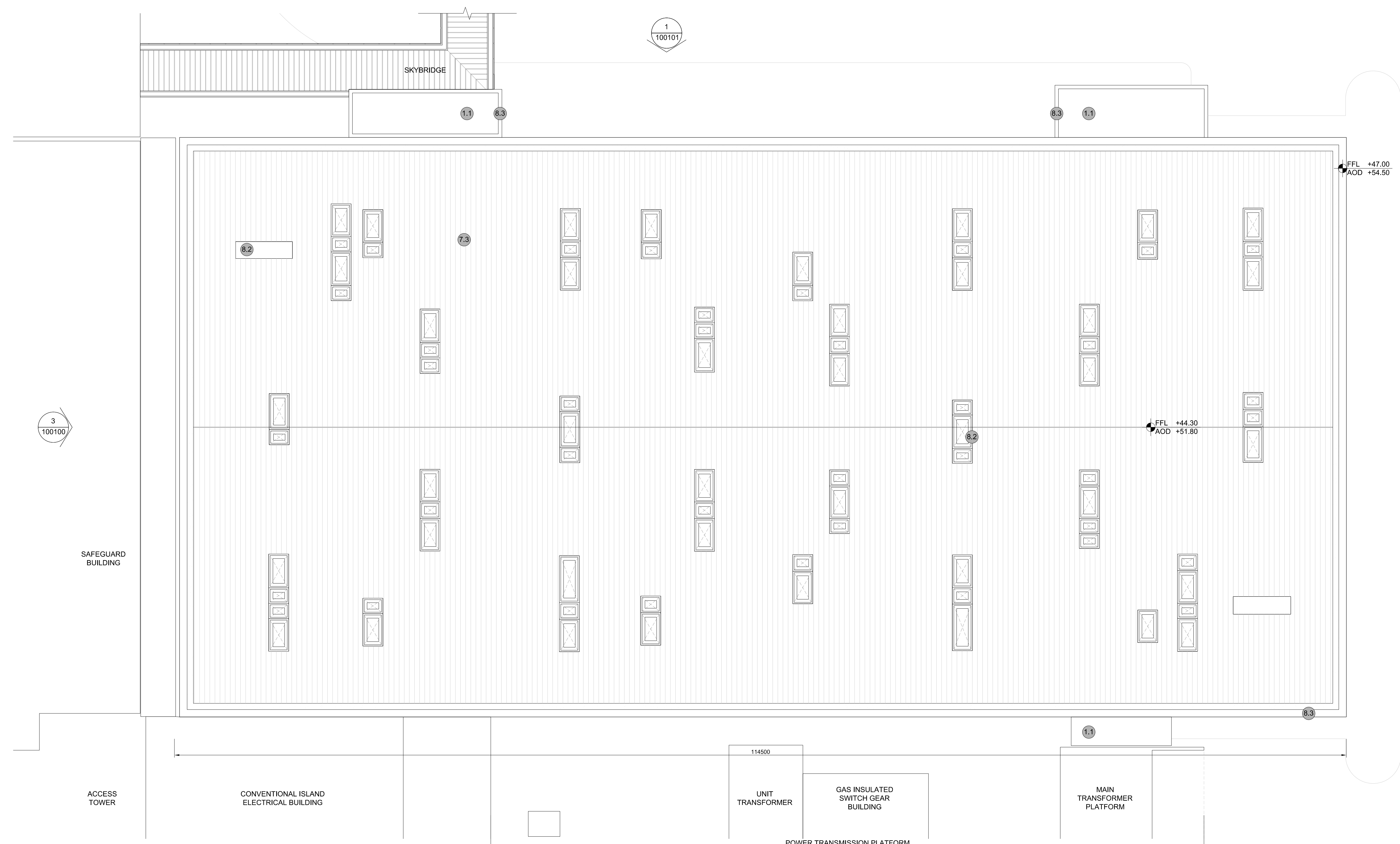


Main Development Site, Conventional Island Plans (Unit 1) – For Approval

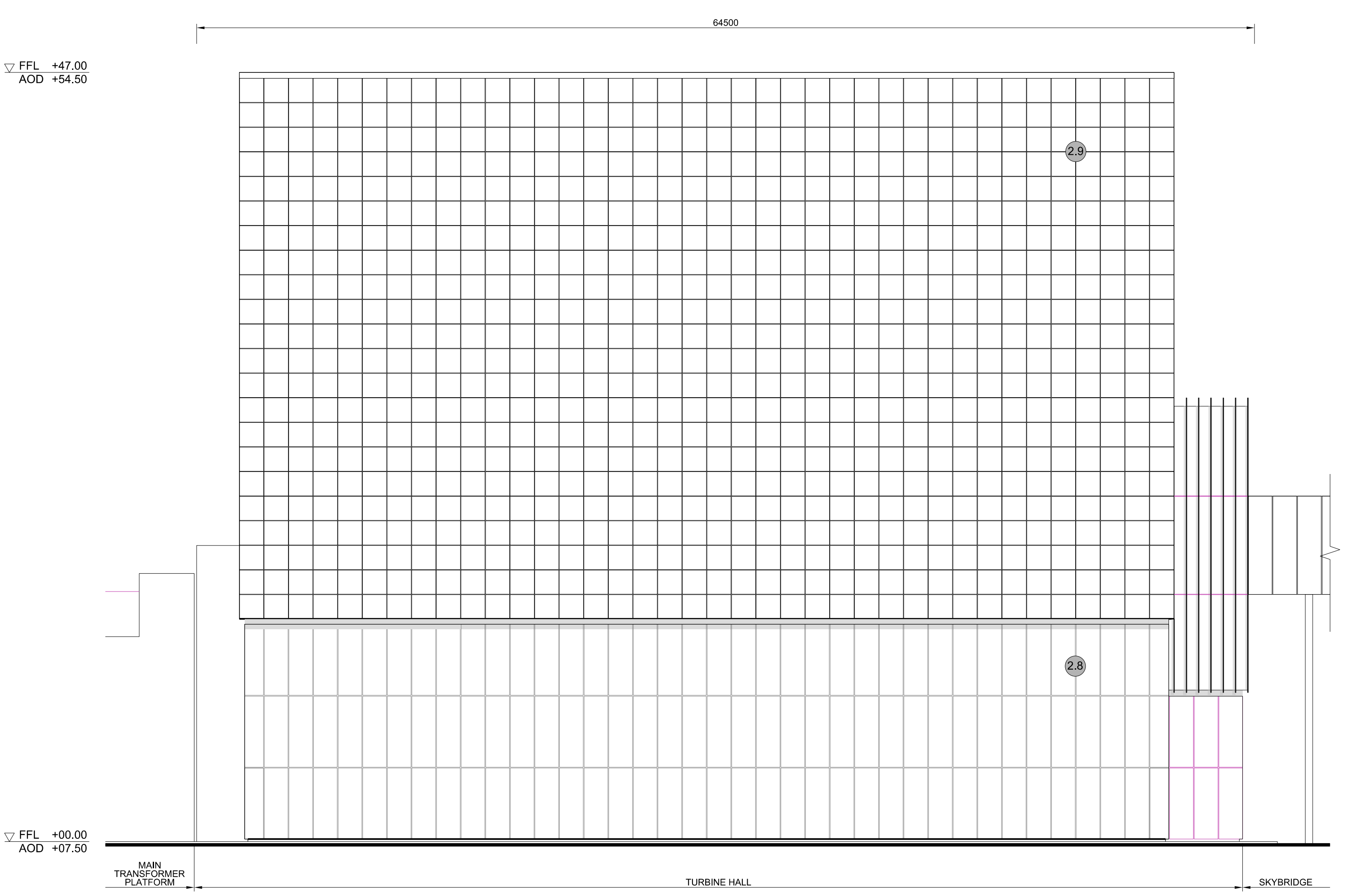
Drawing Number	Revision	Drawing Title	Scale	Sheet Size
Unit 1: Turbine Hall				
SZC-SZ0701-XX-000-DRW-100100	02	Roof Plan, East & West Elevations	1:200	A0
SZC-SZ0701-XX-000-DRW-100101	02	North & South Elevations	1:200	A0
Unit 1: Conventional Island Electrical Building				
SZC-SZ0701-XX-000-DRW-100104	02	Roof Plan	1:100	A1
SZC-SZ0701-XX-000-DRW-100105	02	West Evaluations	1:100	A1
SZC-SZ0701-XX-000-DRW-100106	02	South & East Elevations	1:100	A1
Unit 1: Gas Insulated Switch Gear / Main Transformer / Unit Transformer / Auxiliary Transformer				
SZC-SZ0701-XX-000-DRW-100107	02	Roof Plan	1:200	A1
SZC-SZ0701-XX-000-DRW-100108	02	Elevations	1:200	A1

Main Development Site Conventional Island Plans (Unit 1) For Approval – Revisions Schedule

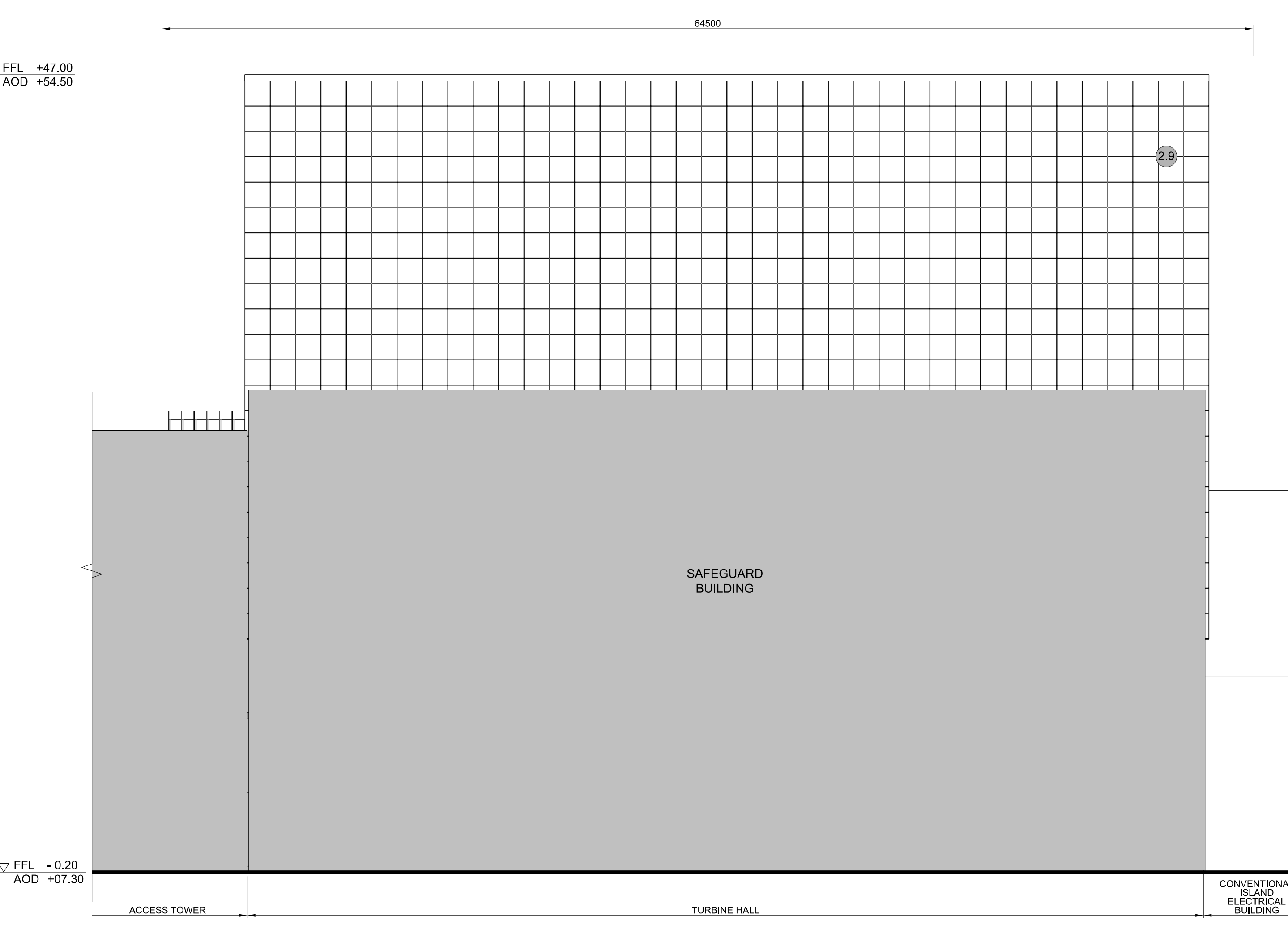
Drawing Number	Revision	Drawing Title	Amendments
Unit 1: Turbine Hall			
SZC-SZ0701-XX-000-DRW-100100	02	Roof Plan, East & West Elevations	Update to drawing title to ensure consistency with the DCO schedules
SZC-SZ0701-XX-000-DRW-100101	02	North & South Elevations	Update to drawing title to ensure consistency with the DCO schedules
Unit 1: Conventional Island Electrical Building			
SZC-SZ0701-XX-000-DRW-100104	02	Roof Plan	Update to drawing title to ensure consistency with the DCO schedules
SZC-SZ0701-XX-000-DRW-100105	02	West Evaluations	Update to drawing title to ensure consistency with the DCO schedules
SZC-SZ0701-XX-000-DRW-100106	02	South & East Elevations	Update to drawing title to ensure consistency with the DCO schedules
Unit 1: Gas Insulated Switch Gear / Main Transformer / Unit Transformer / Auxiliary Transformer			
SZC-SZ0701-XX-000-DRW-100107	02	Roof Plan	Update to drawing title to ensure consistency with the DCO schedules
SZC-SZ0701-XX-000-DRW-100108	02	Elevations	Update to drawing title to ensure consistency with the DCO schedules



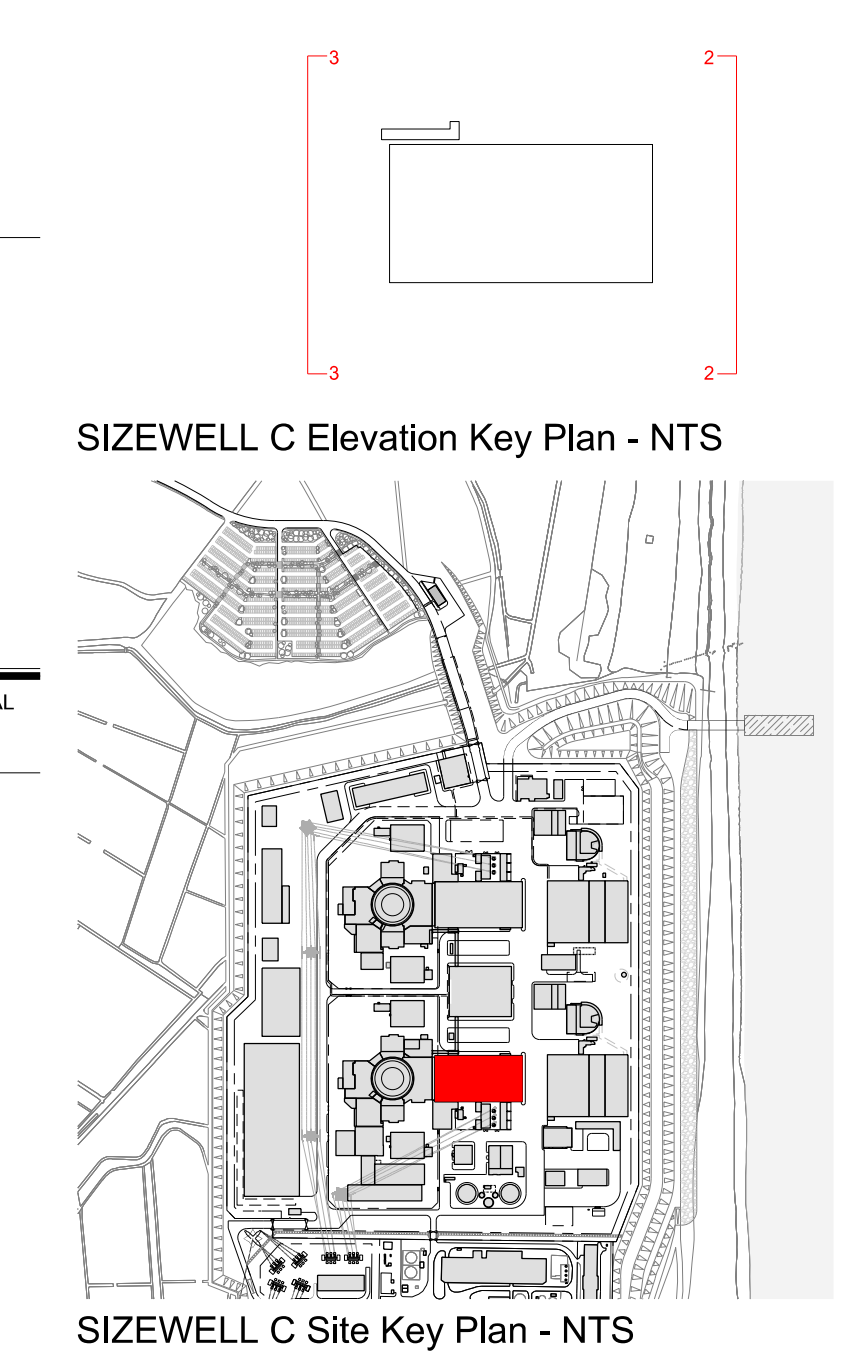
1 ROOF PLAN
SCALE 1:200



2 EAST ELEVATION
SCALE 1:200



3 WEST ELEVATION
SCALE 1:200



SIZEWELL C Elevation Key Plan - NTS
SIZEWELL C Site Key Plan - NTS

NOTES:

- Definitions:
FFL - Finished Floor Level
AOD - Above Ordnance Datum
- Platform level is defined as +7.30m AOD, an additional step of +0.20m locates the finished floor level of all buildings at +7.50m AOD.
- All dimensions are indicated to a tolerance of 0.5m.
- An additional 5m may be required to account for roof plant and machinery which may protrude above the stated roof height, see Sizewell C Design and Access Statement Chapter 7 for details.

KEY:

Vertical Enclosure Wall	Horizontal Enclosure Roof
1 Concrete / render finishes	7 Roofing
1.1 In-situ concrete	7.1 Sedum roof
1.2 Pre-cast concrete	7.2 Ballast
1.3 Render finish	7.3 Standing seam roof
	7.4 Concrete roof
2 Cladding	8 Roofing Accessories
2.1 Aluminium standing seam	8.1 Roof light
2.2 Aluminium panels	8.2 Roof vents and hatches
2.3 Aluminium fins	8.3 Metal cappings and copings
2.4 Profiled steel panels	8.4 Paving
2.5 Flat steel panels	8.5 PVs and solar panels
2.6 Fibre cement cladding	8.6 Timber decking
2.7 Glass reinforced plastic	8.7 Roof Plant
2.8 Glassfibre reinforced concrete panels	8.8 Steel Grid
2.9 Anodised Aluminium panels	
3 Glazing / translucent materials	
3.1 Glazed curtain wall	
3.2 Frameless glazing	
3.3 Framed glazing	
3.4 Opaque glazed spandrel panel	
4 External wall features	
4.1 Aluminium trims, copings and casings	
4.2 Aluminium louvres	
4.3 Steel louvres	
4.4 Aluminium brise-soleil	
4.5 Glass brise-soleil	
4.6 Mesh expanded metal panels	
4.7 Fencing	
4.8 Barbed tape	
4.9 Retractable steel shutters	
4.10 Wall vents and hatches	
4.11 Rainwater pipe and hopper	
5 Doors	
5.1 Metal door	
5.2 Metal louvre door	
5.3 Glazed door	
5.4 Access gates	
6 Window / metalwork accessories	
6.1 External fabric blinds	
6.2 Cavity venetian blinds	
6.3 Glazed balustrade	
6.4 Metal stairs and ladders	
6.5 Steel guardrail	

02	SEP 21	GA	GA	DCO APPLICATION - DEADLINE 8 SUBMISSION (24 SEPTEMBER 2021)	SZC Co
REVISION	DATE	DRAWN	CHECKED	REASONS FOR REVISION / COMMENTS	APPROVED

NOT PROTECTIVELY MARKED

COPYRIGHT:
Reproduced from Ordnance Survey map with the permission of Ordnance Survey on behalf of the controller of Her Majesty's Stationery Office © Crown copyright (2019).
All Rights reserved. NNB GenCo Licence: 0100060408

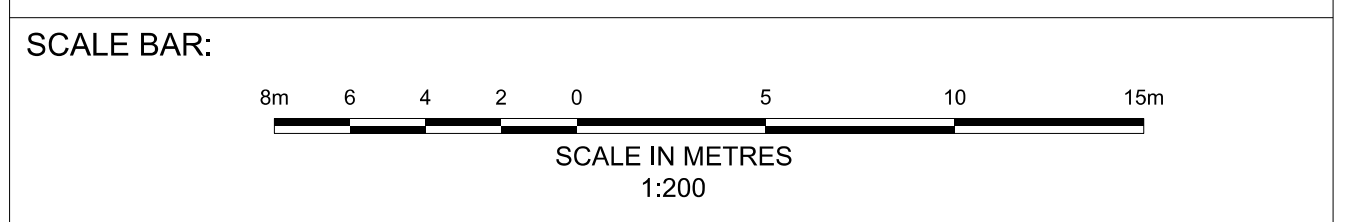


PROJECT:
SIZEWELL C

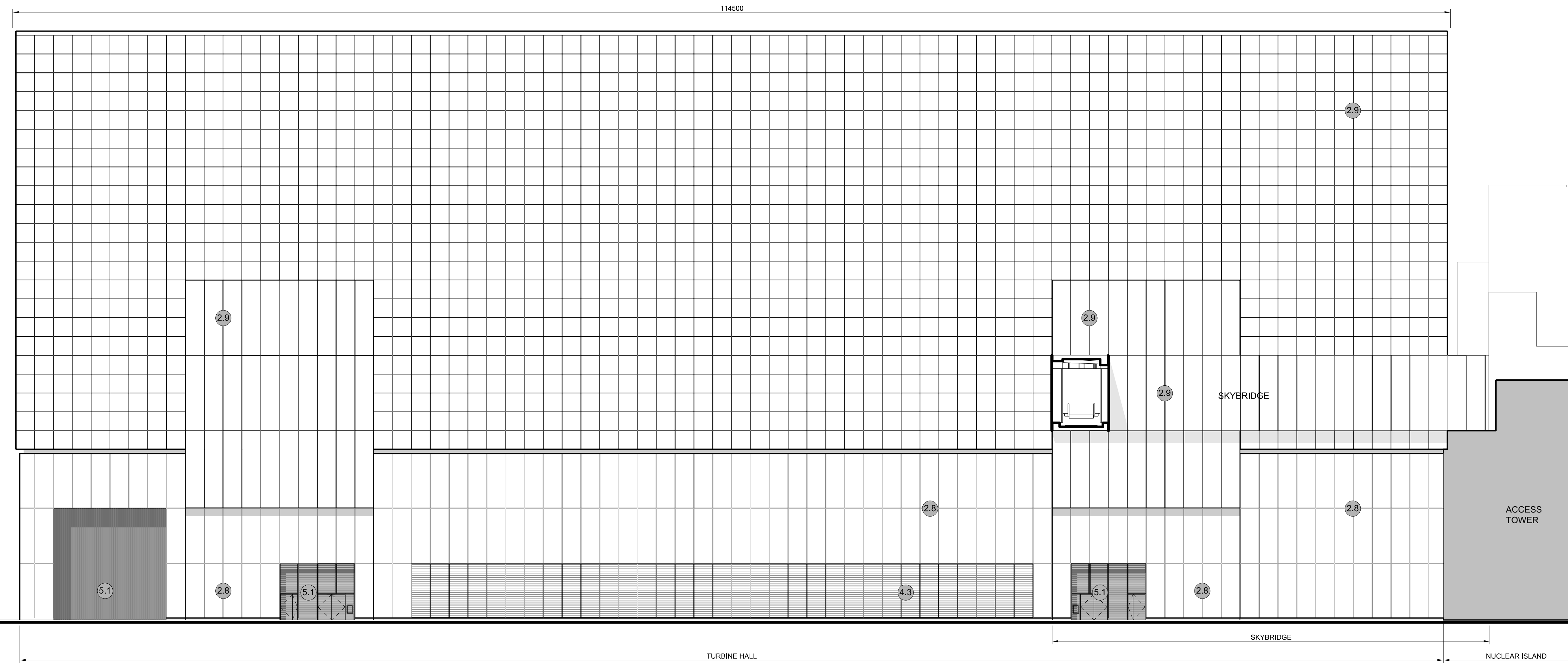
DOCUMENT:
APPLICATION DRAWING - FOR APPROVAL REGULATION 5(2)(o)

DRAWING TITLE:
**MAIN DEVELOPMENT SITE
UNIT 1: TURBINE HALL
ROOF PLAN, EAST & WEST ELEVATIONS**

DRAWING NO: SZC-SZ0701-XX-000-DRW-100100	REVISION: 02
DATE: SEP 2021	DRAWN: EDH
SCALE: 1:200 @ A0	

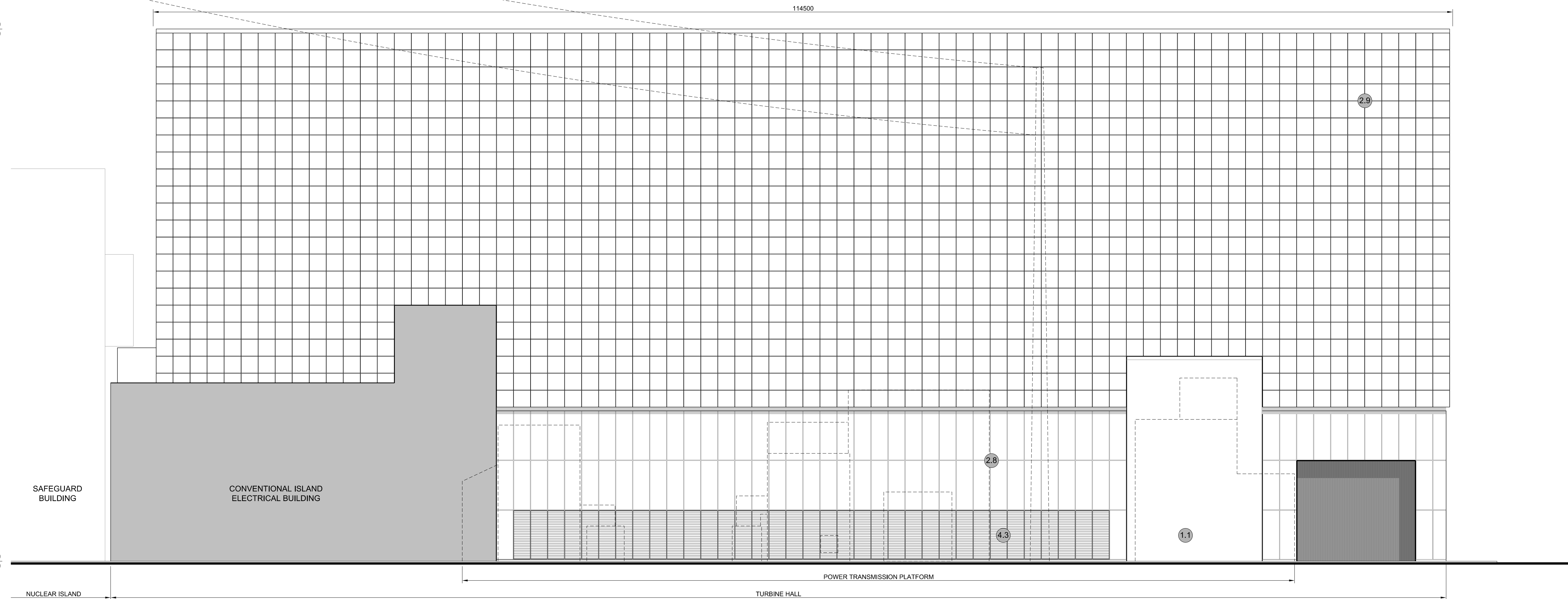


▽ FFL +47.00
AOD +54.50



1 NORTH ELEVATION
SCALE 1:200

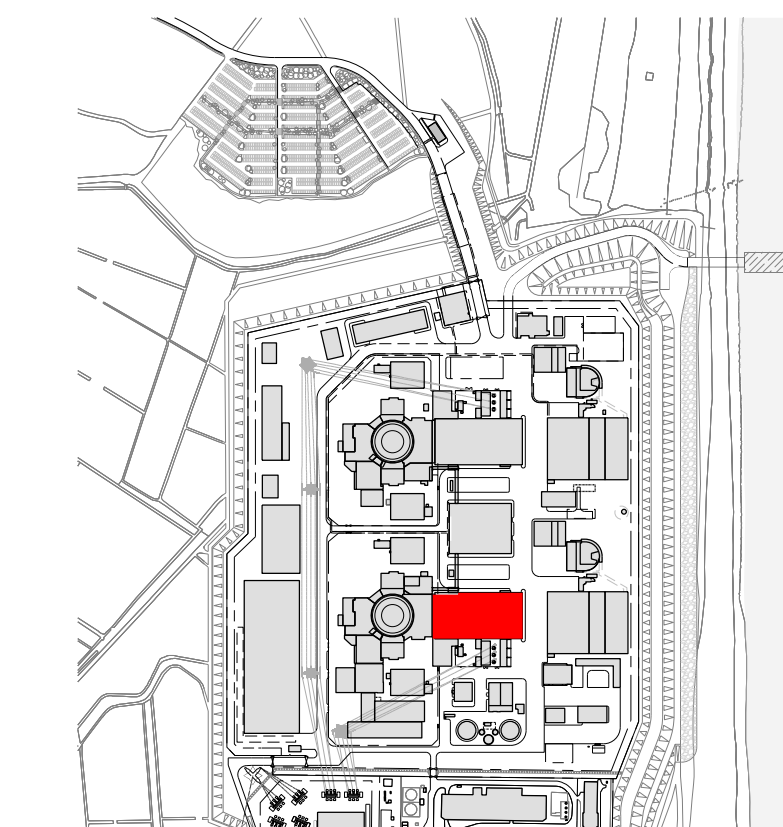
▽ FFL +47.00
AOD +54.50



2 SOUTH ELEVATION
SCALE 1:200

▽ FFL +40.00
AOD +47.50

SIZEWELL C Elevation Key Plan - NTS



SIZEWELL C Site Key Plan - NTS

NOTES:

- Definitions:
FFL - Finished Floor Level
AOD - Above Ordnance Datum
- Platform level is defined as +7.30m AOD, an additional step of +0.20m locates the finished floor level of all buildings at +7.50m AOD.
- All dimensions are indicated to a tolerance of 0.5m.

KEY:

- | | |
|---|--------------------------------|
| Vertical Enclosure | Horizontal Enclosure |
| Wall | Roof |
| 1 Concrete / render finishes | 7 Roofing |
| 1.1 In-situ concrete | 7.1 Sedum roof |
| 1.2 Pre-cast concrete | 7.2 Ballast |
| 1.3 Render finish | 7.3 Standing seam roof |
| | 7.4 Concrete roof |
| 2 Cladding | 8 Roofing Accessories |
| 2.1 Aluminium standing seam | 8.1 Roof light |
| 2.2 Aluminium panels | 8.2 Roof vents and hatches |
| 2.3 Aluminium fins | 8.3 Metal cappings and copings |
| 2.4 Profiled steel panels | 8.4 Paving |
| 2.5 Flat steel panels | 8.5 PVs and solar panels |
| 2.6 Fibre cement cladding | 8.6 Timber decking |
| 2.7 Glass reinforced plastic | 8.7 Roof Plant |
| 2.8 Glassfibre reinforced concrete panels | 8.8 Steel Grid |
| 2.9 Anodised Aluminium panels | |
| 3 Glazing / translucent materials | |
| 3.1 Glazed curtain wall | |
| 3.2 Frameless glazing | |
| 3.3 Framed glazing | |
| 3.4 Opaque glazed spandrel panel | |
| 4 External wall features | |
| 4.1 Aluminium trims, copings and casings | |
| 4.2 Aluminium louvres | |
| 4.3 Steel louvres | |
| 4.4 Aluminium brise-soleil | |
| 4.5 Glass brise-soleil | |
| 4.6 Mesh expanded metal panels | |
| 4.7 Fencing | |
| 4.8 Barbed tape | |
| 4.9 Retractable steel shutters | |
| 4.10 Wall vents and hatches | |
| 4.11 Rainwater pipe and hopper | |
| 5 Doors | |
| 5.1 Metal door | |
| 5.2 Metal louvre door | |
| 5.3 Glazed door | |
| 5.4 Access gates | |
| 6 Window / metalwork accessories | |
| 6.1 External fabric blinds | |
| 6.2 Cavity venetian blinds | |
| 6.3 Glazed balustrade | |
| 6.4 Metal stairs and ladders | |
| 6.5 Steel guardrail | |

REVISION	DATE	DRAWN	CHECKED	REASONS FOR REVISION / COMMENTS	APPROVED
02	SEP 21	GA	GA	DCO APPLICATION - DEADLINE 8 SUBMISSION (24 SEPTEMBER 2021)	SZC Co

NOT PROTECTIVELY MARKED

COPYRIGHT:
Reproduced from Ordnance Survey map with the permission of Ordnance Survey on behalf of the controller of Her Majesty's Stationery Office © Crown copyright (2019).
All Rights reserved. NNB GenCo Licence: 0100060408



PROJECT:
SIZEWELL C

DOCUMENT:
APPLICATION DRAWING - FOR APPROVAL REGULATION 5(2)(o)

DRAWING TITLE:
**MAIN DEVELOPMENT SITE
UNIT 1: TURBINE HALL
NORTH & SOUTH ELEVATIONS**

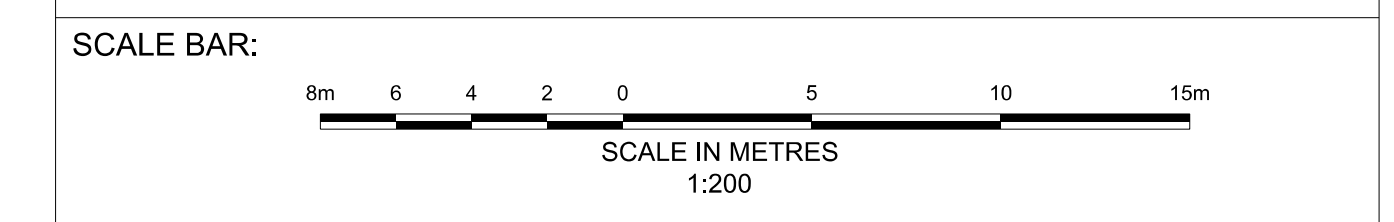
DRAWING NO:
SZC-SZ0701-XX-000-DRW-100101

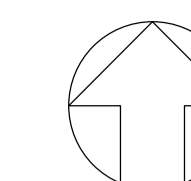
REVISION:
02

DATE:
SEP 2021

DRAWN:
EDH

SCALE:
1:200 @ A0





NOTES:

- 1. Definitions: FFL - Finished Floor Level
AOD - Above Ordnance Datum
- 2. Platform level is defined as +7.30m AOD, an additional step of +0.20m locates the finished floor level of all buildings at +7.50m AOD.
- 3. All dimensions are indicated to a tolerance of 0.5m.
- 4. An additional 5m may be required to account for roof plant and machinery which may protrude above stated roof height, see Sizewell C Design and Access Statement for details.

KEY:

Vertical Enclosure

Wall

- | | |
|-------------------------------------|-----------------------|
| 1 Concrete / render finishes | 5 Doors |
| 1.1 In-situ concrete | 5.1 Metal door |
| 1.2 Pre-cast concrete | 5.2 Metal louvre door |
| 1.3 Render finish | 5.3 Glazed door |
| | 5.4 Access gates |

2 Cladding

- | | |
|--|---|
| 2.1 Aluminium standing seam | 6 Window / metalwork accessories |
| 2.2 Aluminium panels | 6.1 External fabric blinds |
| 2.3 Aluminium fins | 6.2 Cavity venetian blinds |
| 2.4 Profiled steel panels | 6.3 Glazed balustrade |
| 2.5 Flat steel panels | 6.4 Metal stairs and ladders |
| 2.6 Fibre cement cladding | 6.5 Steel guardrail |
| 2.7 Glass reinforced plastic concrete panels | |
| 2.8 Glassfibre reinforced concrete panels | |
| 2.9 Anodised Aluminium panels | |

3 Glazing / translucent materials

- | | |
|----------------------------------|----------------------------------|
| 3.1 Glazed curtain wall | Horizontal Enclosure Roof |
| 3.2 Frameless glazing | 7 Roofing |
| 3.3 Framed glazing | 7.1 Sedum roof |
| 3.4 Opaque glazed spandrel panel | 7.2 Ballast |
| | 7.3 Standing seam roof |
| | 7.4 Concrete roof |

4 External wall features

- | | |
|--|--------------------------------|
| 4.1 Aluminium trims, copings and casings | 8 Roofing Accessories |
| 4.2 Aluminium louvres | 8.1 Roof light |
| 4.3 Steel louvres | 8.2 Roof vents and hatches |
| 4.4 Aluminium brise-soleil | 8.3 Metal cappings and copings |
| 4.5 Glass brise-soleil | 8.4 Paving |
| 4.6 Mesh expanded metal panels | 8.5 PVs and solar panels |
| 4.7 Fencing | 8.6 Timber decking |
| 4.8 Barbed tape | 8.7 Roof Plant |
| 4.9 Retractable steel shutters | 8.8 Steel Grid |
| 4.10 Wall vents and hatches | |
| 4.11 Rainwater pipe and hopper | |

02	SEP 21	GA	GA	DCO APPLICATION - DEADLINE 8 SUBMISSION (24 SEPTEMBER 2021)	SZC Co
REVISION	DATE	DRAWN	CHECKED	REASONS FOR REVISION / COMMENTS	APPROVED

NOT PROTECTIVELY MARKED

COPYRIGHT:

Reproduced from Ordnance Survey map with the permission of Ordnance Survey on behalf of the controller of Her Majesty's Stationery Office © Crown copyright (2019). All Rights reserved. NNB GenCo Licence: 0100060408



PROJECT:
SIZEWELL C

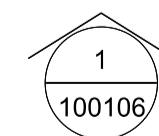
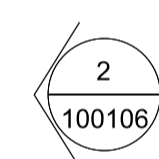
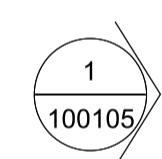
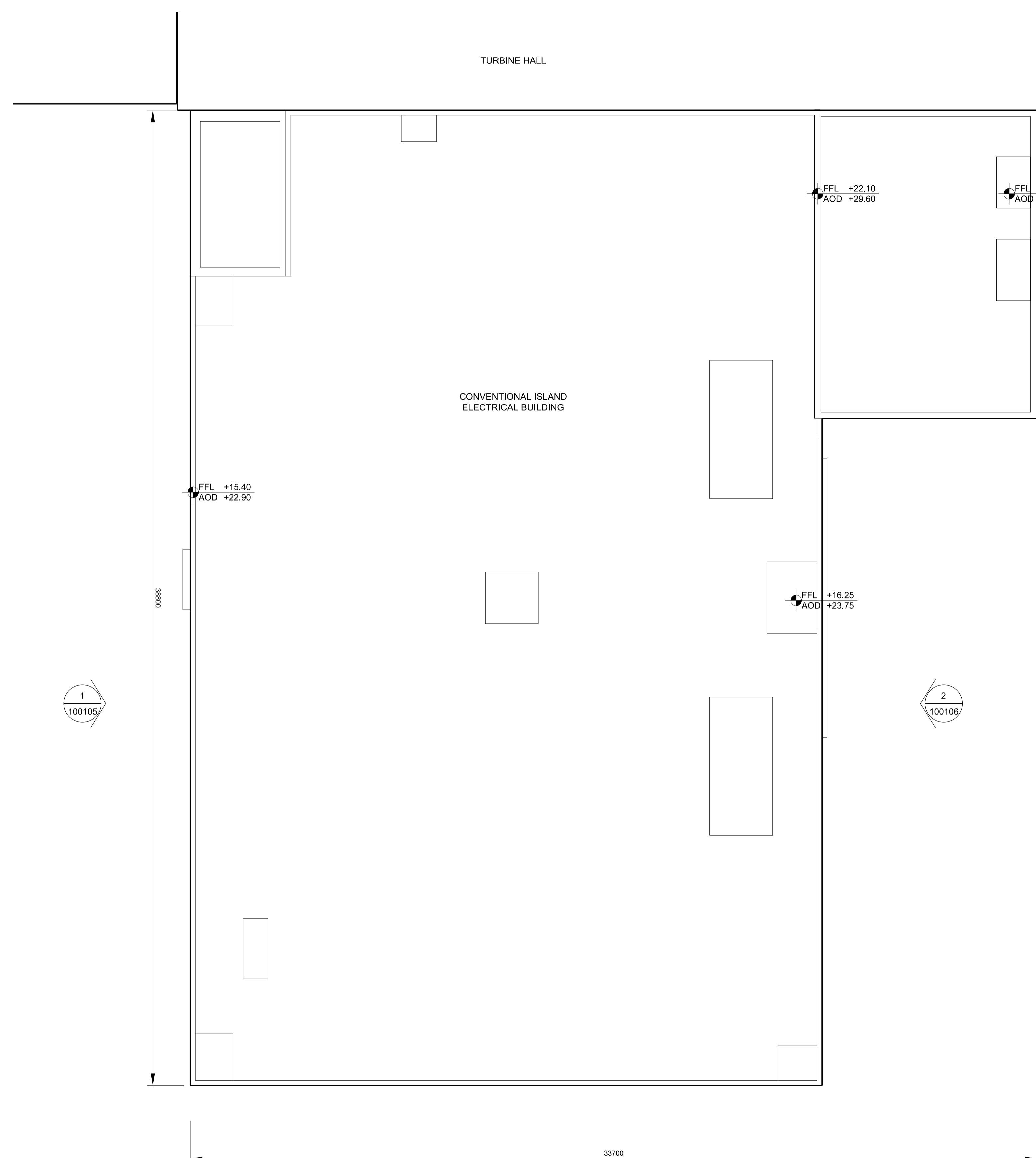
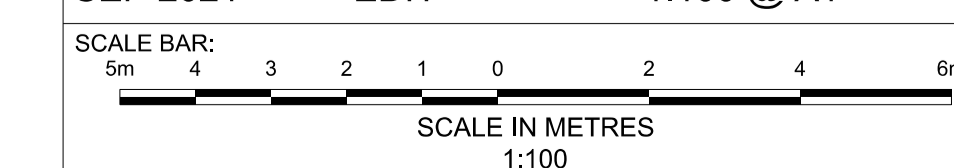
DOCUMENT:
APPLICATION DRAWING - FOR APPROVAL
REGULATION 5(2)(c)

DRAWING TITLE:
MAIN DEVELOPMENT SITE
UNIT 1: CONVENTIONAL ISLAND
ELECTRICAL BUILDING
ROOF PLAN

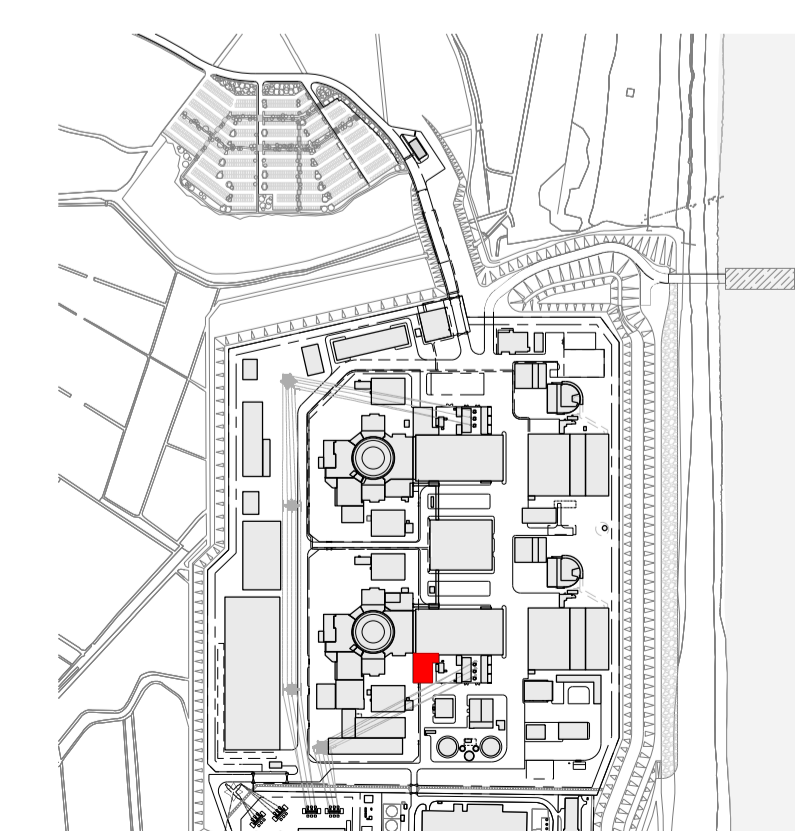
DRAWING NO:
SZC-SZ0701-XX-000-DRW-100104

REVISION:
02

DATE: SEP 2021 DRAWN: EDH SCALE: 1:100 @ A1



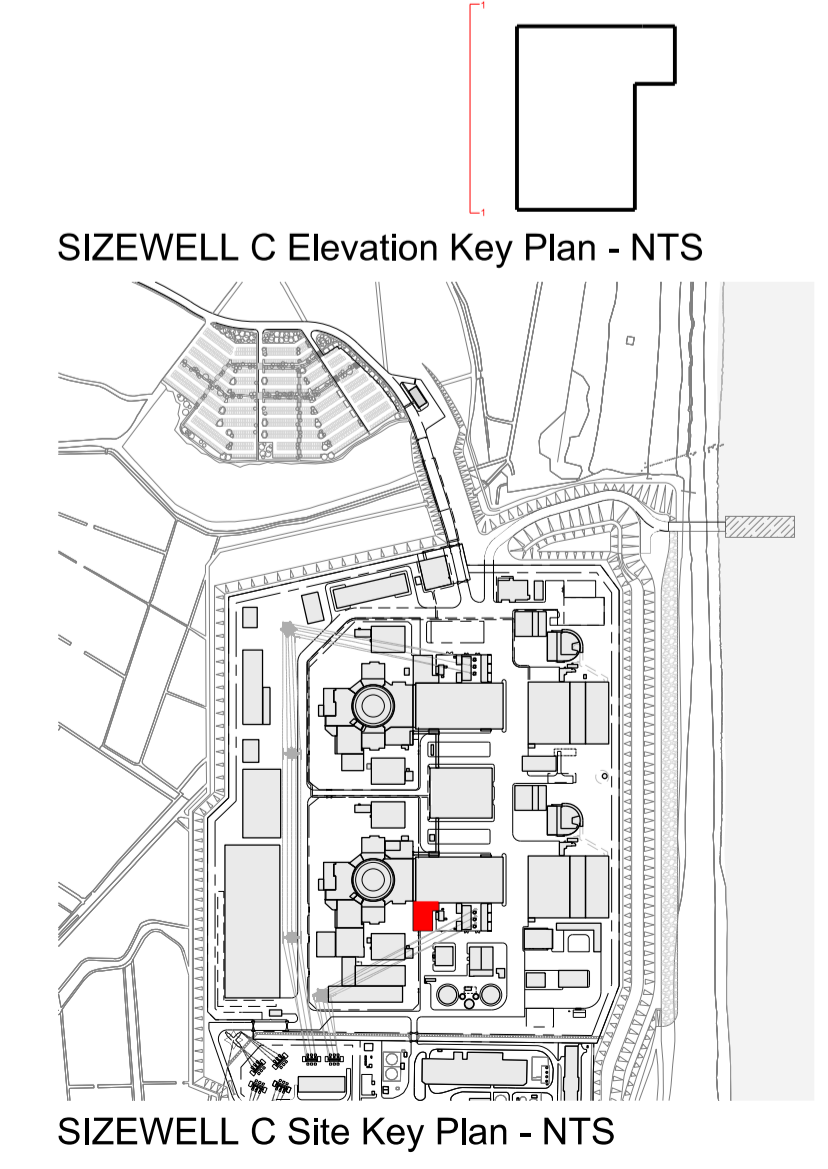
1 ROOF PLAN
SCALE 1:100



SIZEWELL C Site Key Plan - NTS



1 WEST ELEVATION
SCALE 1:100



SIZEWELL C Elevation Key Plan - NTS

SIZEWELL C Site Key Plan - NTS

- NOTES:**
- Definitions: FFL - Finished Floor Level
AOD - Above Ordnance Datum
 - Platform level is defined as +7.30m AOD, an additional step of +0.20m locates the finished floor level of all buildings at +7.50m AOD.
 - All dimensions are indicated to a tolerance of 0.5m.
 - External projections including telecommunications infrastructure (including aerials and satellites), access structures and safety measures (including ladders and handrails), mechanical plant, utilities infrastructure (including solar panels) and minor architectural features (including gutters and lighting) are not shown and may be added subsequently.

- KEY:**
- Vertical Enclosure Wall**
- | | |
|-------------------------------------|-----------------------|
| 1 Concrete / render finishes | 5 Doors |
| 1.1 In-situ concrete | 5.1 Metal door |
| 1.2 Pre-cast concrete | 5.2 Metal louvre door |
| 1.3 Render finish | 5.3 Glazed door |
| | 5.4 Access gates |
- 2 Cladding**
- | | |
|--|---|
| 2.1 Aluminium standing seam | 6 Window / metalwork accessories |
| 2.2 Aluminium panels | 6.1 External fabric blinds |
| 2.3 Aluminium fins | 6.2 Cavity venetian blinds |
| 2.4 Profiled steel panels | 6.3 Glazed balustrade |
| 2.5 Flat steel panels | 6.4 Metal stairs and ladders |
| 2.6 Fibre cement cladding | 6.5 Steel guardrail |
| 2.7 Glass reinforced plastic concrete panels | |
| 2.8 Glassfibre reinforced concrete panels | |
| 2.9 Anodised Aluminium panels | |
- 3 Glazing / translucent materials**
- | | |
|----------------------------------|------------------------|
| 3.1 Glazed curtain wall | 7 Roofing |
| 3.2 Frameless glazing | 7.1 Sedum roof |
| 3.3 Framed glazing | 7.2 Ballast |
| 3.4 Opaque glazed spandrel panel | 7.3 Standing seam roof |
| | 7.4 Concrete roof |
- 4 External wall features**
- | | |
|--|--------------------------------|
| 4.1 Aluminium trims, copings and casings | 8 Roofing Accessories |
| 4.2 Aluminium louvres | 8.1 Roof light |
| 4.3 Steel louvres | 8.2 Roof vents and hatches |
| 4.4 Aluminium brise-soleil | 8.3 Metal cappings and copings |
| 4.5 Glass brise-soleil | 8.4 Paving |
| 4.6 Mesh expanded metal panels | 8.5 PVs and solar panels |
| 4.7 Fencing | 8.6 Timber decking |
| 4.8 Barbed tape | 8.7 Roof Plant |
| 4.9 Retractable steel shutters | 8.8 Steel Grid |
| 4.10 Wall vents and hatches | |
| 4.11 Rainwater pipe and hopper | |

REVISION	DATE	DRAWN/CHECKED	REASONS FOR REVISION / COMMENTS	APPROVED	SZC Co
02	SEP 21	GA	GA	DCO APPLICATION - DEADLINE 8 SUBMISSION (24 SEPTEMBER 2021)	

NOT PROTECTIVELY MARKED

COPYRIGHT:
Reproduced from Ordnance Survey map with the permission of Ordnance Survey on behalf of the controller of Her Majesty's Stationery Office © Crown copyright (2019). All Rights reserved. NNB GenCo Licence: 0100060408



PROJECT:
SIZEWELL C

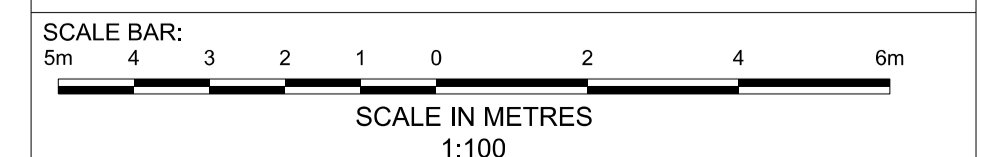
DOCUMENT:
APPLICATION DRAWING - FOR APPROVAL REGULATION 5(2)(c)

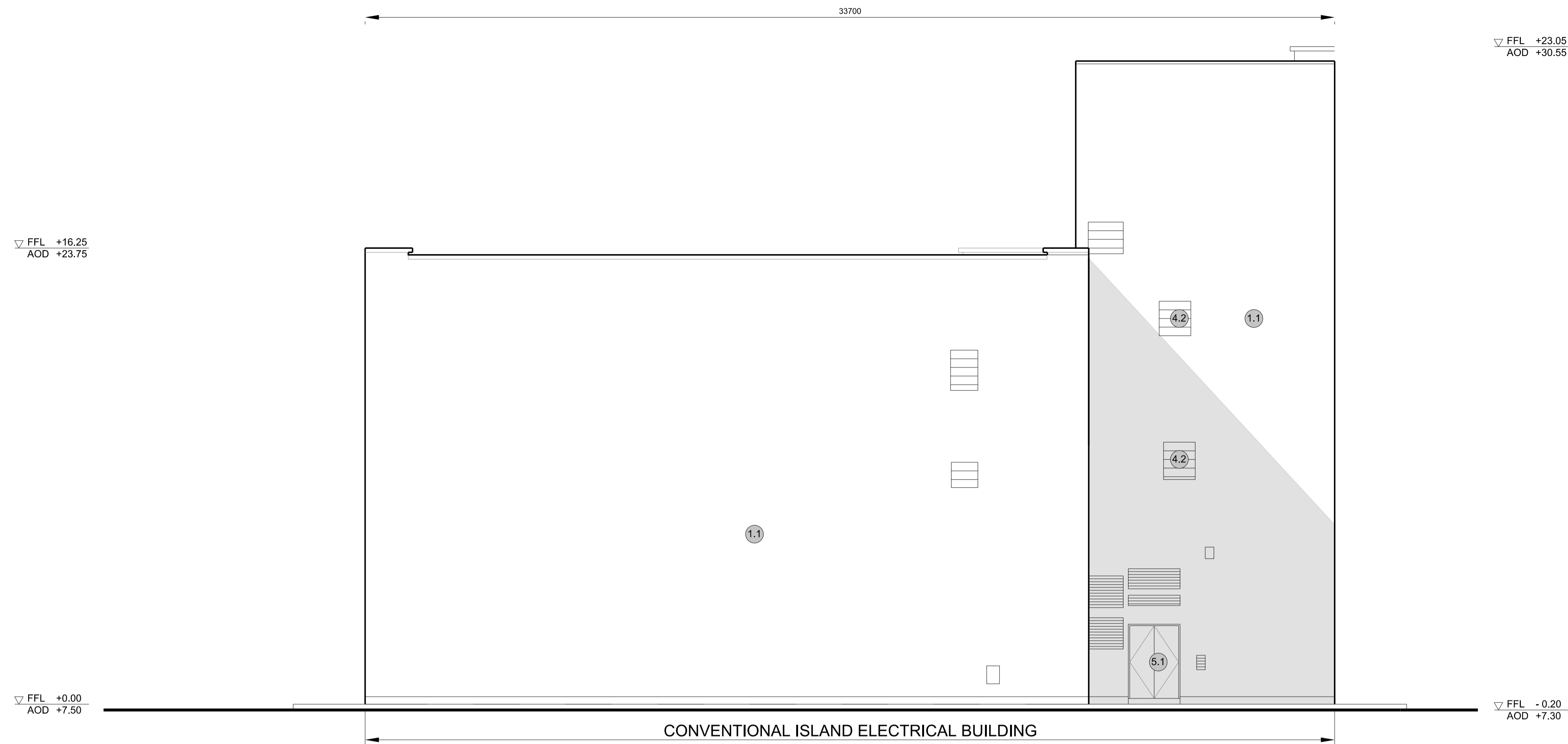
DRAWING TITLE:
MAIN DEVELOPMENT SITE
UNIT 1: CONVENTIONAL ISLAND ELECTRICAL BUILDING
WEST ELEVATION

DRAWING NO:
SZC-SZ0701-XX-000-DRW-100105

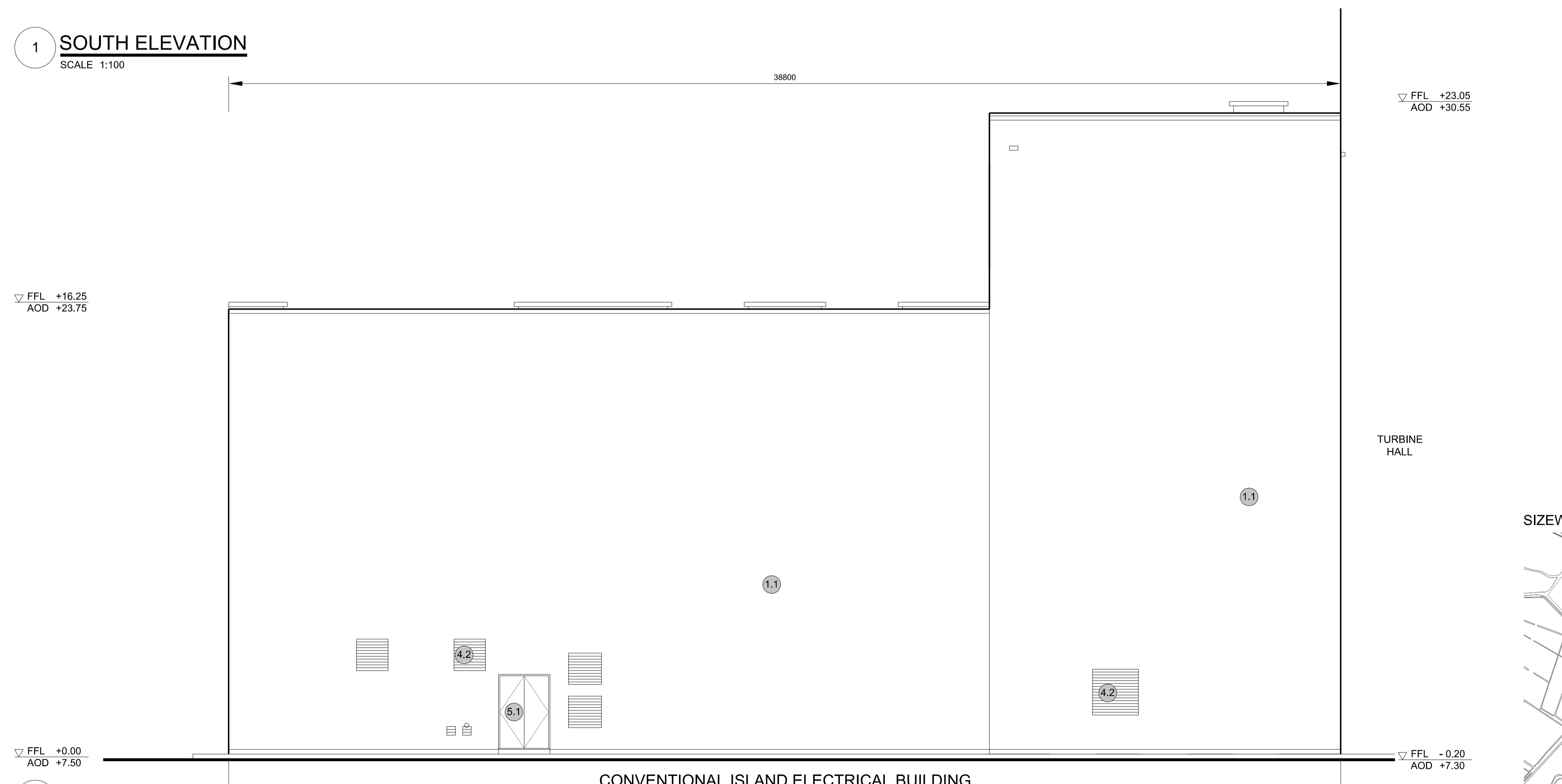
REVISION:
02

DATE: SEP 2021
DRAWN: EDH
SCALE: 1:100 @ A1





1 SOUTH ELEVATION
SCALE 1:100



2 EAST ELEVATION
SCALE 1:100

▽ FFL +23.05
AOD +30.55

▽ FFL -0.20
AOD +7.30

▽ FFL +23.05
AOD +30.55

▽ FFL -0.20
AOD +7.30

- NOTES:**
- Definitions: FFL - Finished Floor Level
AOD - Above Ordnance Datum
 - Platform level is defined as +7.30m AOD, an additional step of +0.20m locates the finished floor level of all buildings at +7.50m AOD.
 - All dimensions are indicated to a tolerance of 0.5m.
 - External projections including telecommunications infrastructure (including aerials and satellites), access structures and safety measures (including ladders and handrails), mechanical plant, utilities infrastructure (including solar panels) and minor architectural features (including gutters and lighting) are not shown and may be added subsequently.

- KEY:**
- Vertical Enclosure**
- Wall**
- | | |
|-------------------------------------|-----------------------|
| 1 Concrete / render finishes | 5 Doors |
| 1.1 In-situ concrete | 5.1 Metal door |
| 1.2 Pre-cast concrete | 5.2 Metal louvre door |
| 1.3 Render finish | 5.3 Glazed door |
| | 5.4 Access gates |
- 2 Cladding**
- | | |
|--|---|
| 2.1 Aluminium standing seam | 6 Window / metalwork accessories |
| 2.2 Aluminium panels | 6.1 External fabric blinds |
| 2.3 Aluminium fins | 6.2 Cavity venetian blinds |
| 2.4 Profiled steel panels | 6.3 Glazed balustrade |
| 2.5 Flat steel panels | 6.4 Metal stairs and ladders |
| 2.6 Fibre cement cladding | 6.5 Steel guardrail |
| 2.7 Glass reinforced plastic concrete panels | |
| 2.9 Anodised Aluminium panels | |
- 3 Glazing / translucent materials**
- | | |
|----------------------------------|------------------------|
| 3.1 Glazed curtain wall | 7 Roofing |
| 3.2 Frameless glazing | 7.1 Sedum roof |
| 3.3 Framed glazing | 7.2 Ballast |
| 3.4 Opaque glazed spandrel panel | 7.3 Standing seam roof |
| | 7.4 Concrete roof |
- 4 External wall features**
- | | |
|--|--------------------------------|
| 4.1 Aluminium trims, copings and casings | 8 Roofing Accessories |
| 4.2 Aluminium louvres | 8.1 Roof light |
| 4.3 Steel louvres | 8.2 Roof vents and hatches |
| 4.4 Aluminium brise-soleil | 8.3 Metal cappings and copings |
| 4.5 Glass brise-soleil | 8.4 Paving |
| 4.6 Mesh expanded metal panels | 8.5 PVs and solar panels |
| 4.7 Fencing | 8.6 Timber decking |
| 4.8 Barbed tape | 8.7 Roof Plant |
| 4.9 Retractable steel shutters | 8.8 Steel Grid |
| 4.10 Wall vents and hatches | |
| 4.11 Rainwater pipe and hopper | |

02	SEP 21	GA	GA	DCO APPLICATION - DEADLINE 8 SUBMISSION (24 SEPTEMBER 2021)	SZC Co
REVISION	DATE	DRAWN/CHECKED		REASONS FOR REVISION / COMMENTS	APPROVED

NOT PROTECTIVELY MARKED

COPYRIGHT:
Reproduced from Ordnance Survey map with the permission of Ordnance Survey on behalf of the controller of Her Majesty's Stationery Office © Crown copyright (2019). All Rights reserved. NNB GenCo Licence: 0100060408



PROJECT:
SIZEWELL C

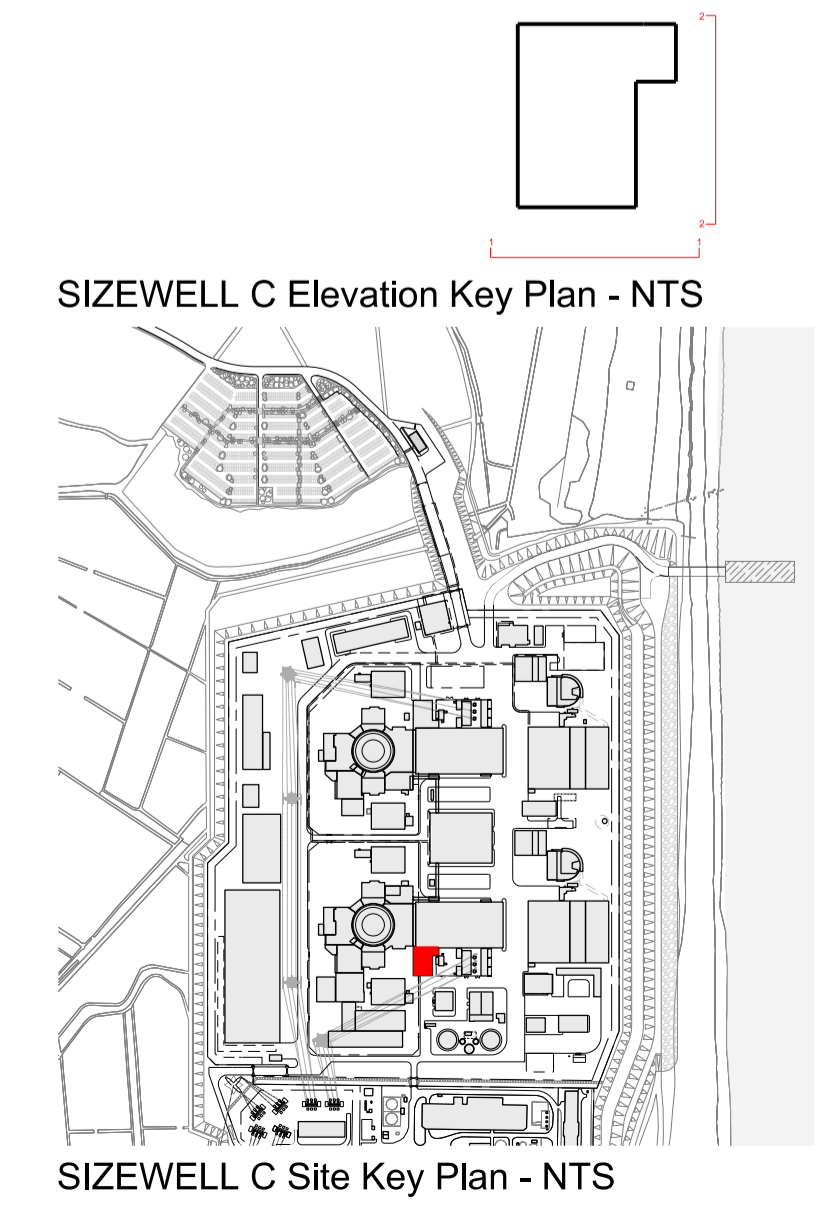
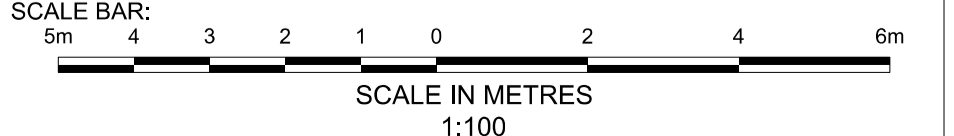
DOCUMENT:
APPLICATION DRAWING - FOR APPROVAL REGULATION 5(2)(o)

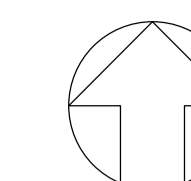
DRAWING TITLE:
MAIN DEVELOPMENT SITE UNIT 1: CONVENTIONAL ISLAND ELECTRICAL BUILDING SOUTH & EAST ELEVATIONS

DRAWING NO:
SZC-SZ0701-XX-000-DRW-100106

REVISION:
02

DATE: SEP 2021
DRAWN: EDH
SCALE: 1:100 @ A1





NOTES:

- Definitions:
FFL - Finished Floor Level
AOD - Above Ordnance Datum
- Platform level is defined as +7.30m AOD, an additional step of +0.20m locates the finished floor level of all buildings at +7.50m AOD.
- All dimensions are indicated to a tolerance of 0.5m.
- An additional 5m may be required to account for roof plant and machinery which may protrude above stated roof height, see Sizewell C Design and Access Statement for details.

KEY:

Vertical Enclosure

Wall

- | | |
|-------------------------------------|-----------------------|
| 1 Concrete / render finishes | 5 Doors |
| 1.1 In-situ concrete | 5.1 Metal door |
| 1.2 Pre-cast concrete | 5.2 Metal louvre door |
| 1.3 Render finish | 5.3 Glazed door |
| | 5.4 Access gates |

2 Cladding

- | | |
|---|---|
| 2.1 Aluminium standing seam | 6 Window / metalwork accessories |
| 2.2 Aluminium panels | 6.1 External fabric blinds |
| 2.3 Aluminium fins | 6.2 Cavity venetian blinds |
| 2.4 Profiled steel panels | 6.3 Glazed balustrade |
| 2.5 Flat steel panels | 6.4 Metal stairs and ladders |
| 2.6 Fibre cement cladding | 6.5 Steel guardrail |
| 2.7 Glass reinforced plastic | |
| 2.8 Glassfibre reinforced concrete panels | |
| 2.9 Anodised Aluminium panels | |

3 Glazing / translucent materials

- | | |
|----------------------------------|------------------------|
| 3.1 Glazed curtain wall | 7 Roofing |
| 3.2 Frameless glazing | 7.1 Sedum roof |
| 3.3 Framed glazing | 7.2 Ballast |
| 3.4 Opaque glazed spandrel panel | 7.3 Standing seam roof |
| | 7.4 Concrete roof |

4 External wall features

- | | |
|--|--------------------------------|
| 4.1 Aluminium trims, copings and casings | 8 Roofing Accessories |
| 4.2 Aluminium louvres | 8.1 Roof light |
| 4.3 Steel louvres | 8.2 Roof vents and hatches |
| 4.4 Aluminium brise-soleil | 8.3 Metal cappings and copings |
| 4.5 Glass brise-soleil | 8.4 Paving |
| 4.6 Mesh expanded metal panels | 8.5 PVs and solar panels |
| 4.7 Fencing | 8.6 Timber decking |
| 4.8 Barbed tape | 8.7 Roof Plant |
| 4.9 Retractable steel shutters | 8.8 Steel Grid |
| 4.10 Wall vents and hatches | |
| 4.11 Rainwater pipe and hopper | |

02	SEP 21	GA	GA	DCO APPLICATION - DEADLINE 8 SUBMISSION (24 SEPTEMBER 2021)	SZC Co
REVISION	DATE	DRAWN/CHECKED		REASONS FOR REVISION / COMMENTS	APPROVED

NOT PROTECTIVELY MARKED

COPYRIGHT:

Reproduced from Ordnance Survey map with the permission of Ordnance Survey on behalf of the controller of Her Majesty's Stationery Office © Crown copyright (2019). All Rights reserved. NNB GenCo Licence: 0100060408



PROJECT:
SIZEWELL C

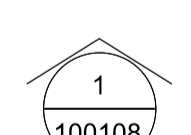
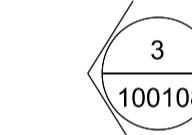
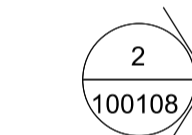
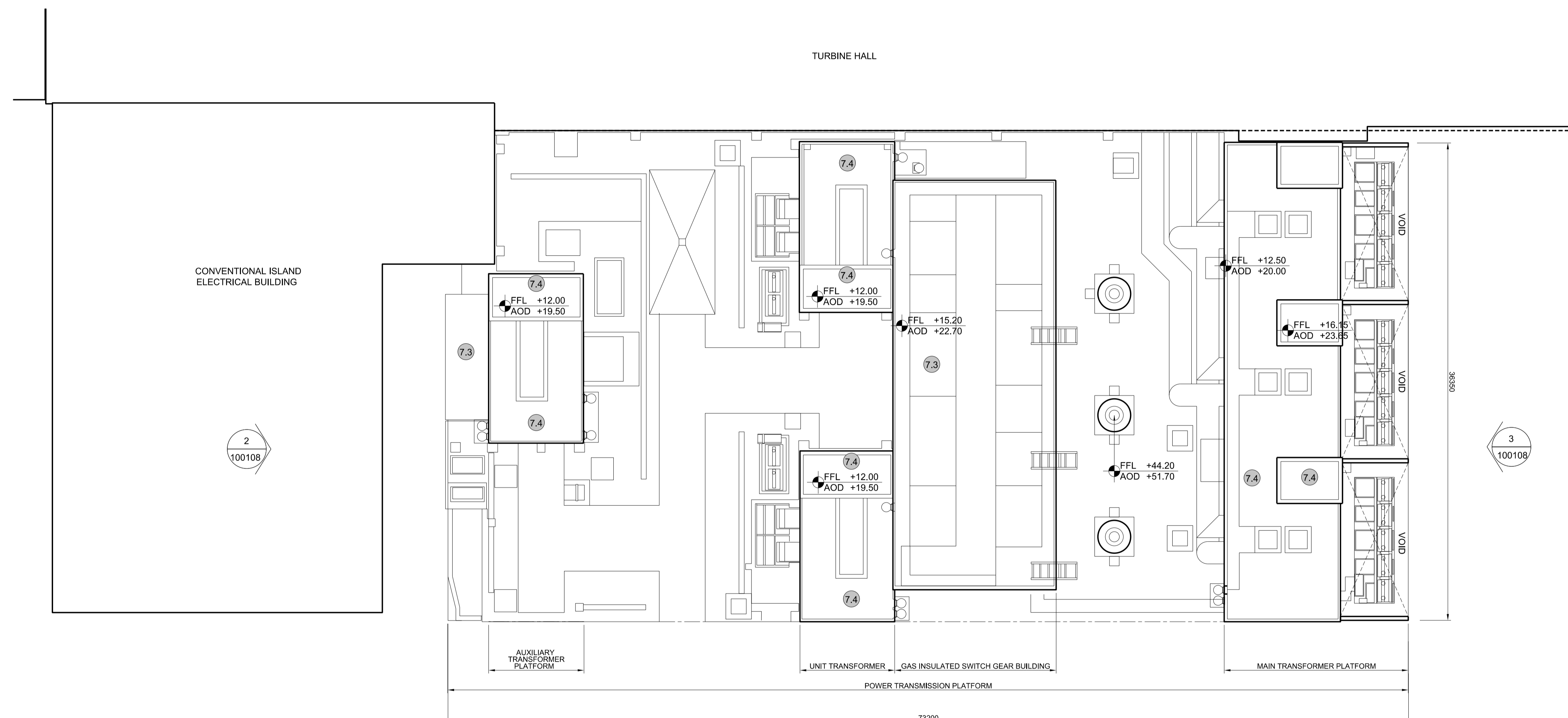
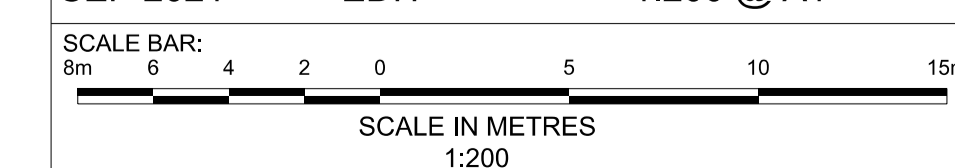
DOCUMENT:
APPLICATION DRAWING - FOR APPROVAL
REGULATION 5(2)(c)

DRAWING TITLE:
MAIN DEVELOPMENT SITE
UNIT 1: GAS INSULATED SWITCH GEAR
BUILDING / MAIN TRANSFORMER PLATFORM /
UNIT TRANSFORMER / AUXILIARY
TRANSFORMER PLATFORM ROOF PLAN

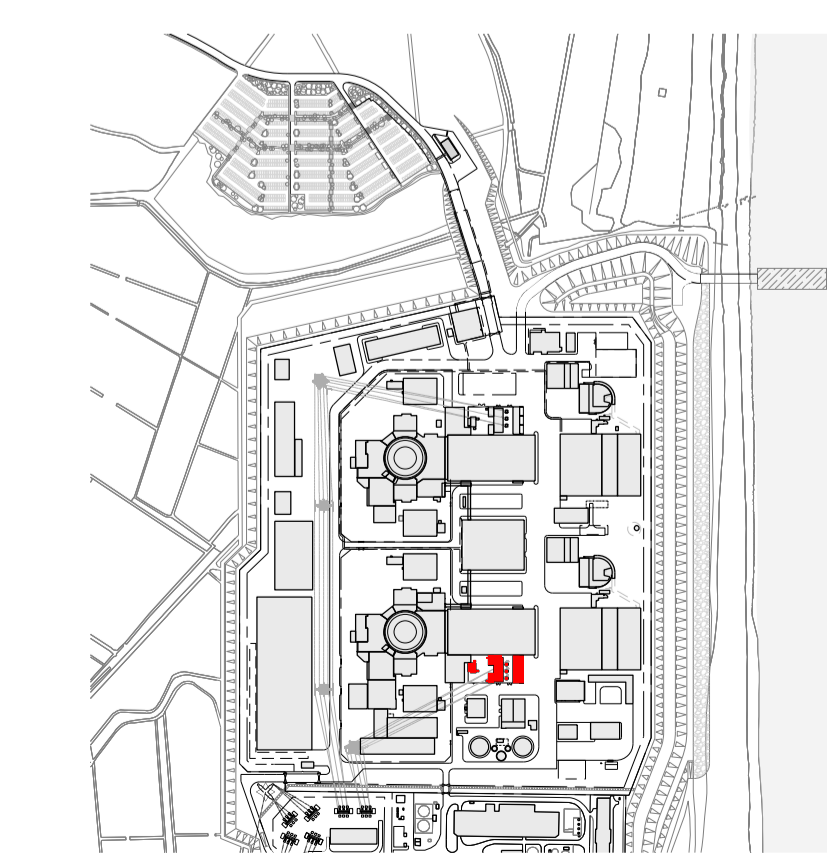
DRAWING NO:
SZC-SZ0701-XX-000-DRW-100107

REVISION:
02

DATE: SEP 2021
DRAWN: EDH
SCALE: 1:200 @ A1



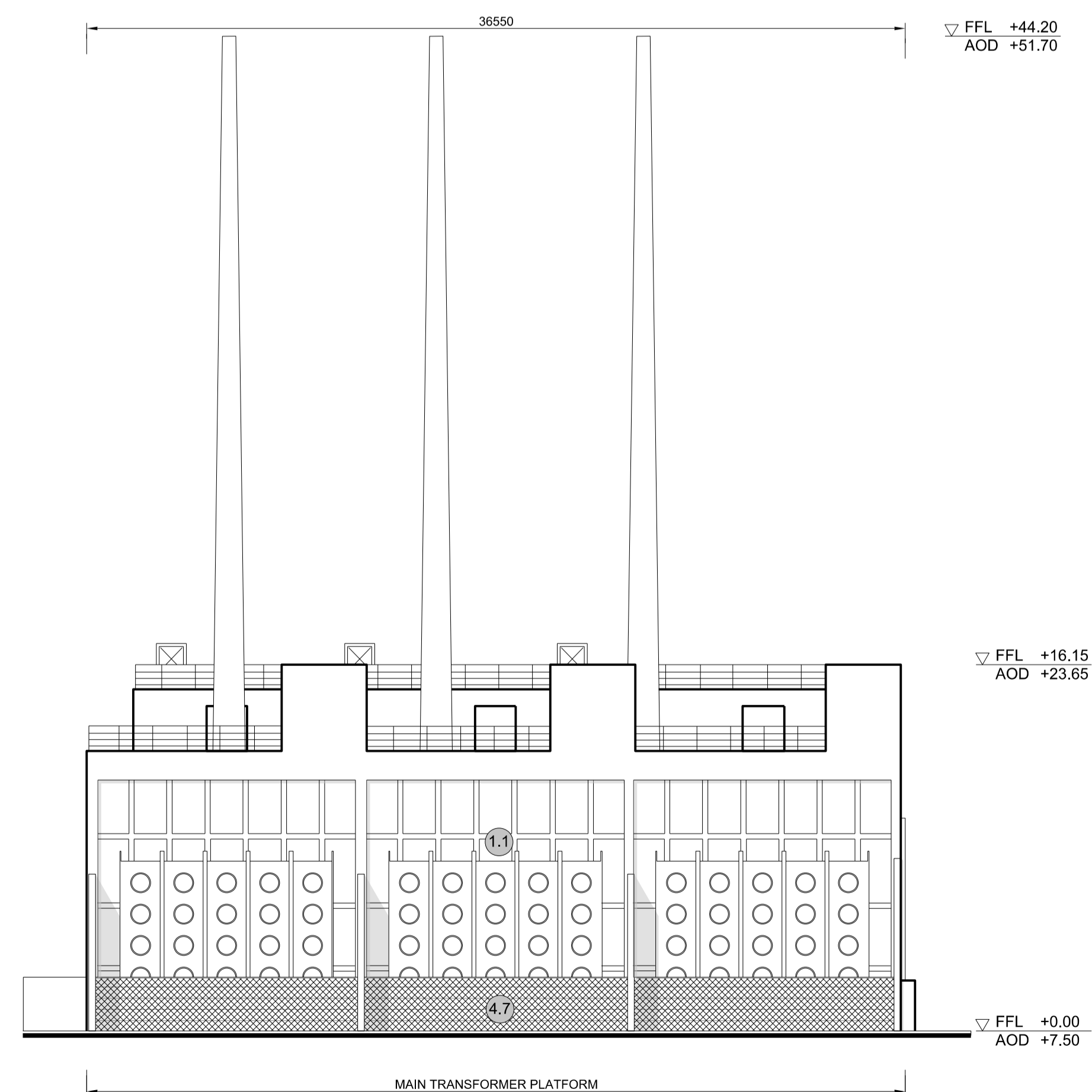
1 ROOF PLAN
SCALE 1:200



SIZEWELL C Site Key Plan - NTS



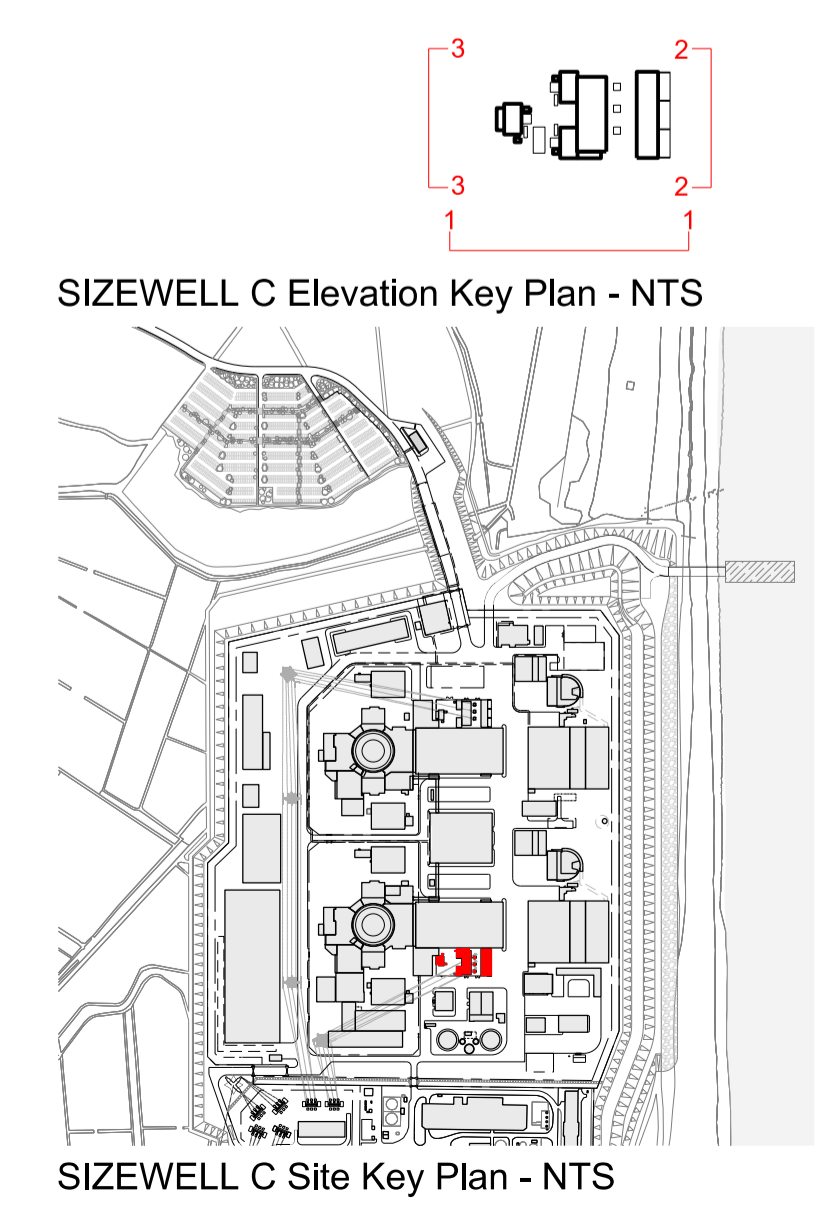
1 SOUTH ELEVATION
SCALE 1:200



2 EAST ELEVATION
SCALE 1:200



3 WEST ELEVATION
SCALE 1:200



NOTES:

- Definitions: FFL - Finished Floor Level
AOD - Above Ordnance Datum
- Platform level is defined as +7.30m AOD, an additional step of +0.20m locates the finished floor level of all buildings at +7.50m AOD.
- All dimensions are indicated to a tolerance of 0.5m.
- External projections including telecommunications infrastructure (including aeriels and satellites), access structures and safety measures (including ladders and handrails), mechanical plant, utilities infrastructure (including solar panels) and minor architectural features (including gutters and lighting) are not shown and may be added subsequently.

- KEY:**
- Vertical Enclosure Wall**
- | | |
|-------------------------------------|-----------------------|
| 1 Concrete / render finishes | 5 Doors |
| 1.1 In-situ concrete | 5.1 Metal door |
| 1.2 Pre-cast concrete | 5.2 Metal louvre door |
| 1.3 Render finish | 5.3 Glazed door |
| | 5.4 Access gates |
- 2 Cladding**
- | | |
|--|---|
| 2.1 Aluminium standing seam | 6 Window / metalwork accessories |
| 2.2 Aluminium panels | 6.1 External fabric blinds |
| 2.3 Aluminium fins | 6.2 Cavity venetian blinds |
| 2.4 Profiled steel panels | 6.3 Glazed balustrade |
| 2.5 Flat steel panels | 6.4 Metal stairs and ladders |
| 2.6 Fibre cement cladding | 6.5 Steel guardrail |
| 2.7 Glass reinforced plastic concrete panels | |
| 2.9 Anodised Aluminium panels | |
- 3 Glazing / translucent materials**
- | | |
|----------------------------------|----------------------------------|
| 3.1 Glazed curtain wall | Horizontal Enclosure Roof |
| 3.2 Frameless glazing | 7 Roofing |
| 3.3 Framed glazing | 7.1 Sedum roof |
| 3.4 Opaque glazed spandrel panel | 7.2 Ballast |
| | 7.3 Standing seam roof |
| | 7.4 Concrete roof |
- 4 External wall features**
- | | |
|--|--------------------------------|
| 4.1 Aluminium trims, copings and casings | 8 Roofing Accessories |
| 4.2 Aluminium louvres | 8.1 Roof light |
| 4.3 Steel louvres | 8.2 Roof vents and hatches |
| 4.4 Aluminium brise-soleil | 8.3 Metal cappings and copings |
| 4.5 Glass brise-soleil | 8.4 Paving |
| 4.6 Mesh expanded metal panels | 8.5 PVs and solar panels |
| 4.7 Fencing | 8.6 Timber decking |
| 4.8 Barbed tape | 8.7 Roof Plant |
| 4.9 Retractable steel shutters | 8.8 Steel Grid |
| 4.10 Wall vents and hatches | |
| 4.11 Rainwater pipe and hopper | |

02	SEP 21	GA	GA	DCO APPLICATION - DEADLINE 8 SUBMISSION (24 SEPTEMBER 2021)	SZC Co
REVISION	DATE	DRAWN/CHECKED	REASONS FOR REVISION / COMMENTS	APPROVED	

NOT PROTECTIVELY MARKED

COPYRIGHT:
Reproduced from Ordnance Survey map with the permission of Ordnance Survey on behalf of the controller of Her Majesty's Stationery Office © Crown copyright (2019). All Rights reserved. NNB GenCo Licence: 0100060408



PROJECT:
SIZEWELL C

DOCUMENT:
APPLICATION DRAWING - FOR APPROVAL REGULATION 5(2)(c)

DRAWING TITLE:
**MAIN DEVELOPMENT SITE
UNIT 1: GAS INSULATED SWITCH GEAR BUILDING / MAIN TRANSFORMER PLATFORM / UNIT TRANSFORMER / AUXILIARY TRANSFORMER PLATFORM ELEVATIONS**

DRAWING NO: SZC-SZ0701-XX-000-DRW-100108 REVISION: 02

DATE: SEP 2021 DRAWN: EDH SCALE: 1:200 @ A1

