



# The Sizewell C Project

---

## 2.5 Main Development Site Pylon Plan for Approval

---

September 2021

Planning Act 2008  
Infrastructure Planning (Applications: Prescribed Forms and Procedure) Regulations 2009

Revision: 2.0  
Applicable Regulation: Regulation 5(2)(o)  
PINS Reference Number: EN010012



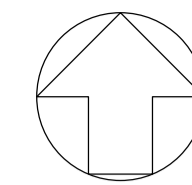


# Main Development Site Pylon Plan for Approval

| Drawing Number               | Revision | Drawing Title                          | Scale   | Sheet Size |
|------------------------------|----------|--|---------|------------|
| SZC-SZ0701-XX-000-DRW-100128 | 02       | Pylon Arrangement - Plans & Elevations | Various | A1         |

# Main Development Site Highway Plans Not For Approval – Revisions Schedule

| Drawing Number               | Revision | Drawing Title                         | Amendments   |
|------------------------------|----------|---------------------------------------|--|
| SZC-SZ0701-XX-000-DRW-100128 | 02       | Pylon Arrangement - Plan & Elevations | Minor relocations and change from Pylon A to B for the southern pylon. |

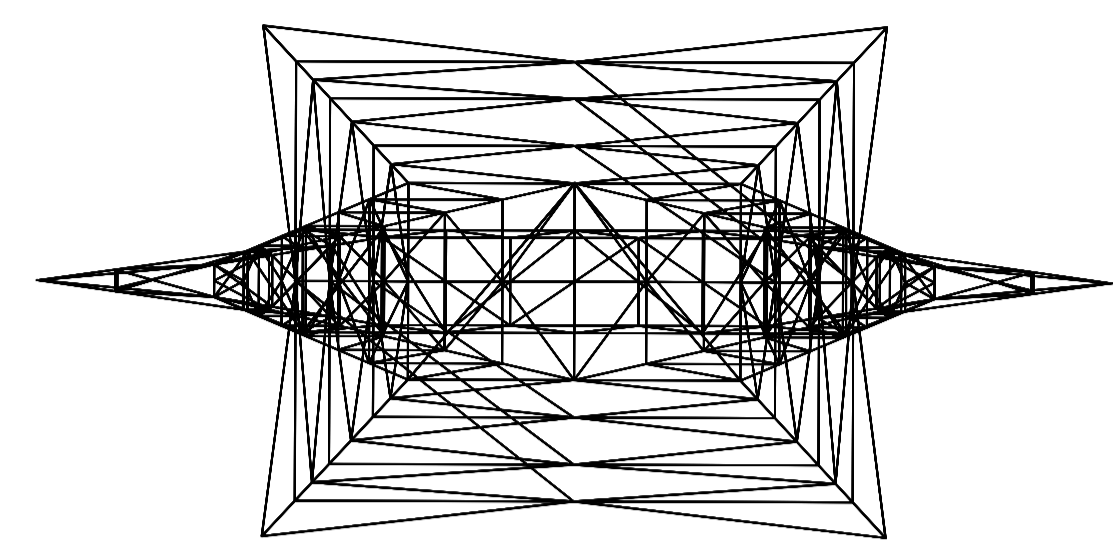


**NOTES:**

- 1. Definitions: FFL - Finished Floor Level AOD - Above Ordnance Datum
- 2. Platform level is defined as +7.30m AOD, an additional step of +0.20m locates the finished floor level of all buildings at +7.50m AOD.
- 3. Pylon locations and associated transmission cables are not for approval.

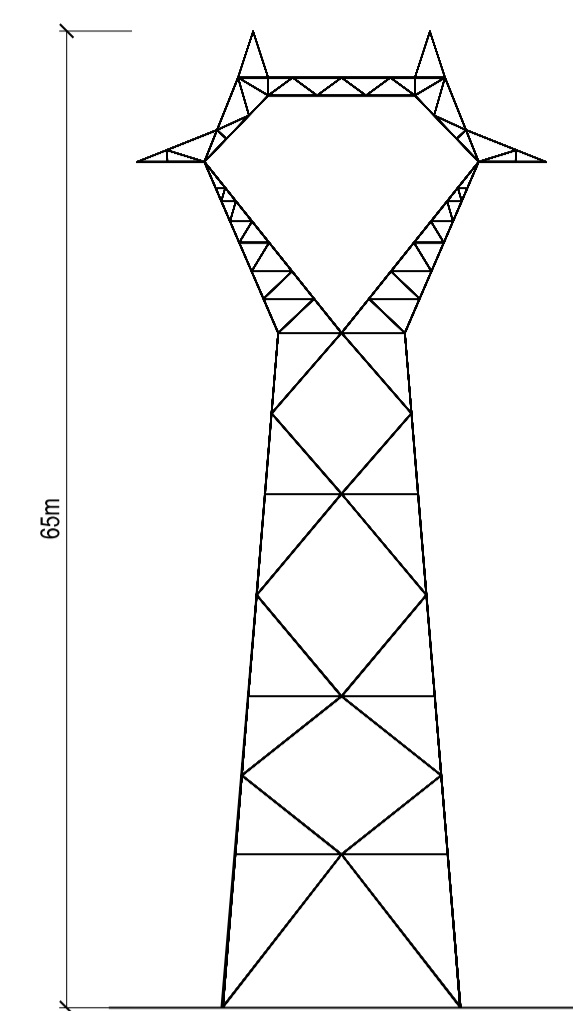
**KEY:**

- PROPOSED SIZEWELL C PYLON
- PROPOSED SIZEWELL C MONOPOLE
- PROPOSED NATIONAL GRID PYLON
- PROPOSED NATIONAL GRID GENTRY
- EXISTING OVERHEAD LINE
- PROPOSED OVERHEAD LINE

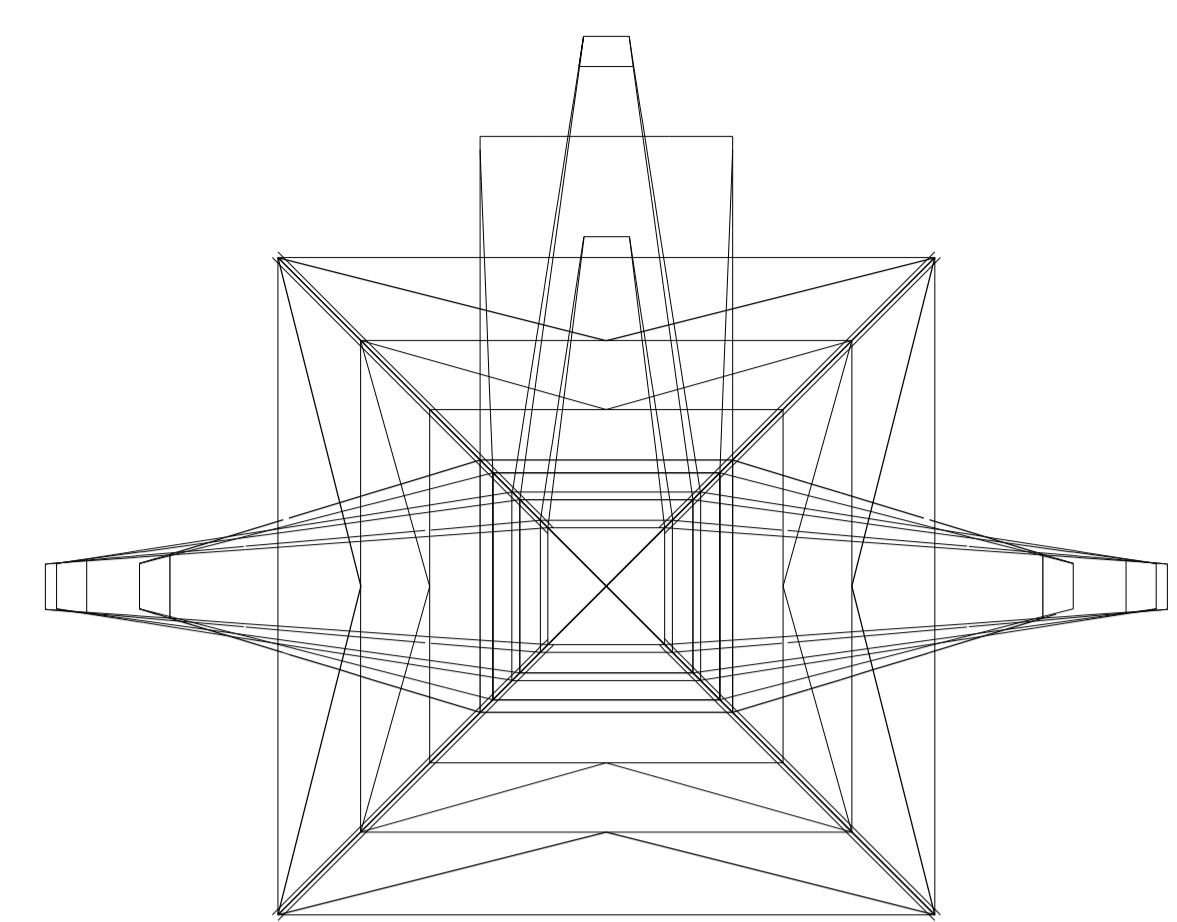


Height: 65m  
Base dimensions: 17 x 14m

**1 PYLON A: PLAN**  
SCALE 1:200

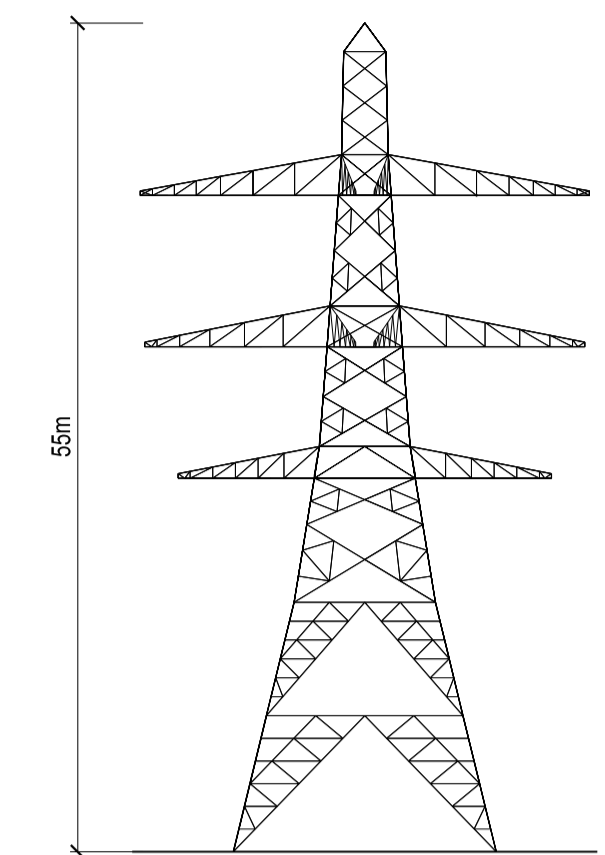


**2 PYLON A: ELEVATION**  
SCALE 1:500

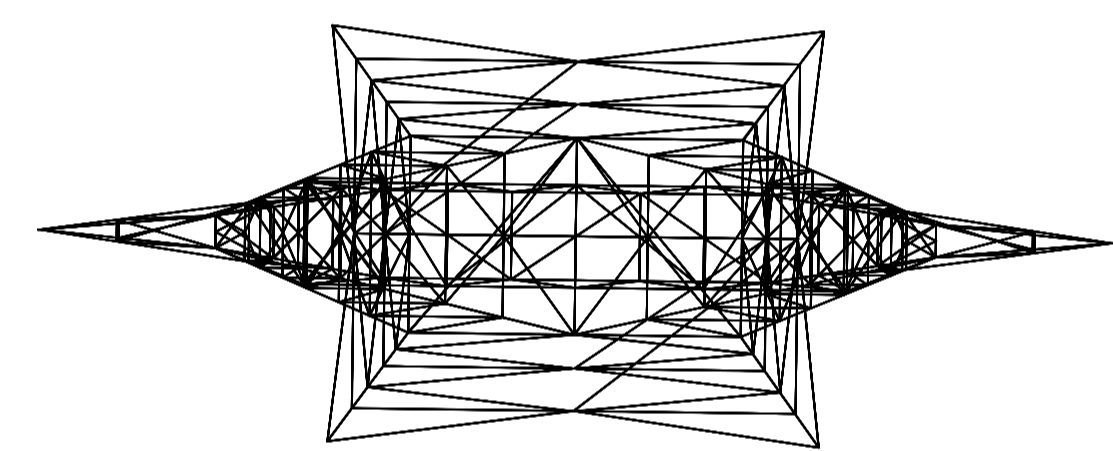


Height: 55m  
Base dimensions: 17.4 x 17.4m

**7 NATIONAL GRID PYLON: PLAN**  
SCALE 1:200

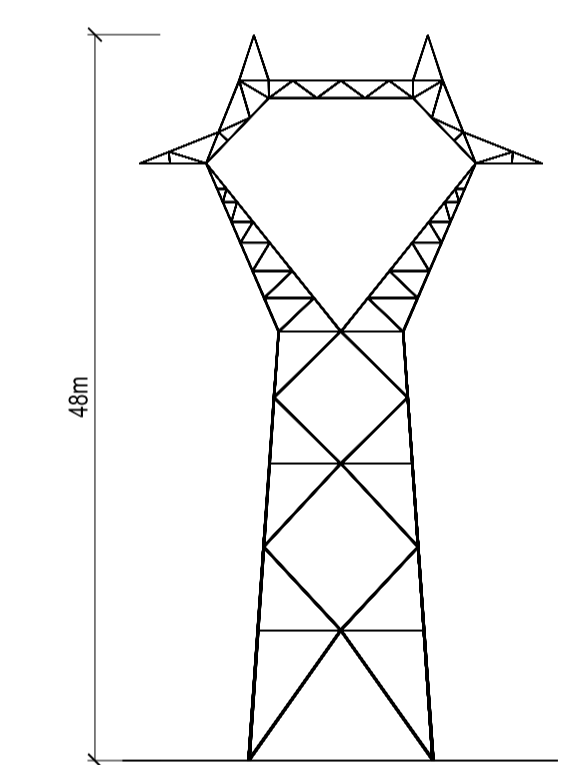


**8 NATIONAL GRID PYLON: ELEVATION**  
SCALE 1:500

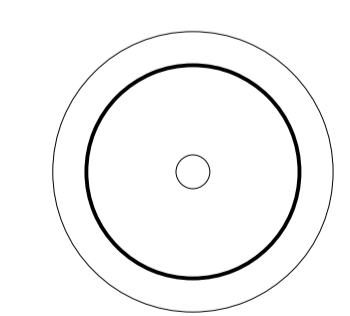


Height: 48m  
Base dimensions: 13 x 11m

**3 PYLON B: PLAN**  
SCALE 1:200

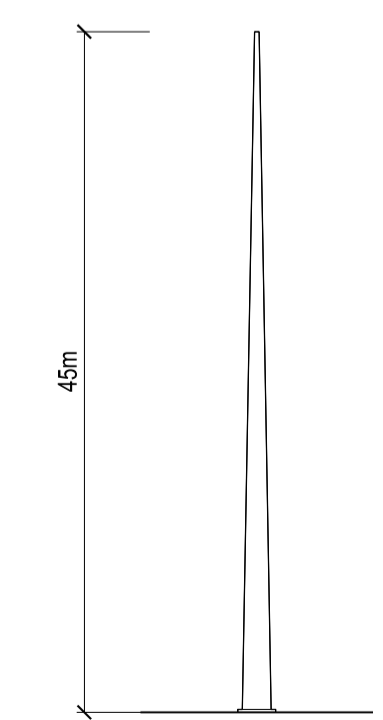


**4 PYLON B: ELEVATION**  
SCALE 1:500

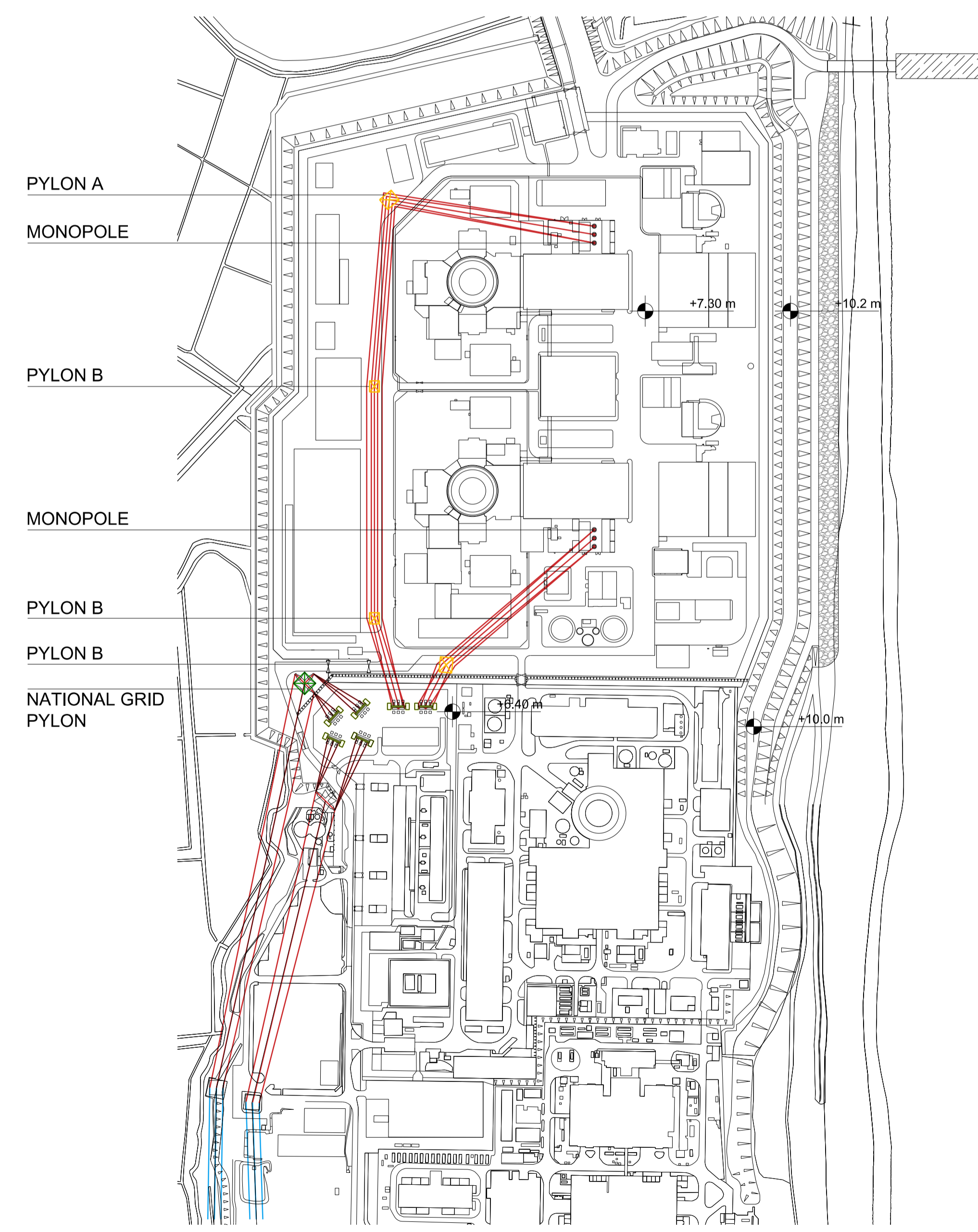


Height: 45m  
Base dimensions: 2.5m diameter

**5 MONOPOLE: PLAN**  
SCALE 1:200



**6 MONOPOLE: ELEVATION**  
SCALE 1:500



**9 PYLON ROUTES - ILLUSTRATIVE ARRANGEMENT**  
SCALE 1:4000

| REVISION | DATE   | DRAWN/CHECKED | REASONS FOR REVISION / COMMENTS | APPROVED  |        |
|----------|--------|---------------|---------------------------------|---|--------|
| 02       | SEP 21 | GA            | GA                              | DCO APPLICATION - DEADLINE 9 SUBMISSION (30 SEPTEMBER 2021) | SZC Co |

NOT PROTECTIVELY MARKED

**COPYRIGHT:**  
 Reproduced from Ordnance Survey map with the permission of Ordnance Survey on behalf of the controller of Her Majesty's Stationery Office © Crown copyright (2019). All Rights reserved. NNB GenCo Licence: 0100060408



PROJECT:  
SIZEWELL C

DOCUMENT:  
APPLICATION DRAWING - FOR APPROVAL REGULATION 5(2)(c)

DRAWING TITLE:  
MAIN DEVELOPMENT SITE  
POWER INFRASTRUCTURE: PYLON ARRANGEMENT  
PLAN & ELEVATION

DRAWING NO:  
SZC-SZ0701-XX-000-DRW-100128

DATE: SEP 2021  
DRAWN: CH  
SCALE: VARIES

